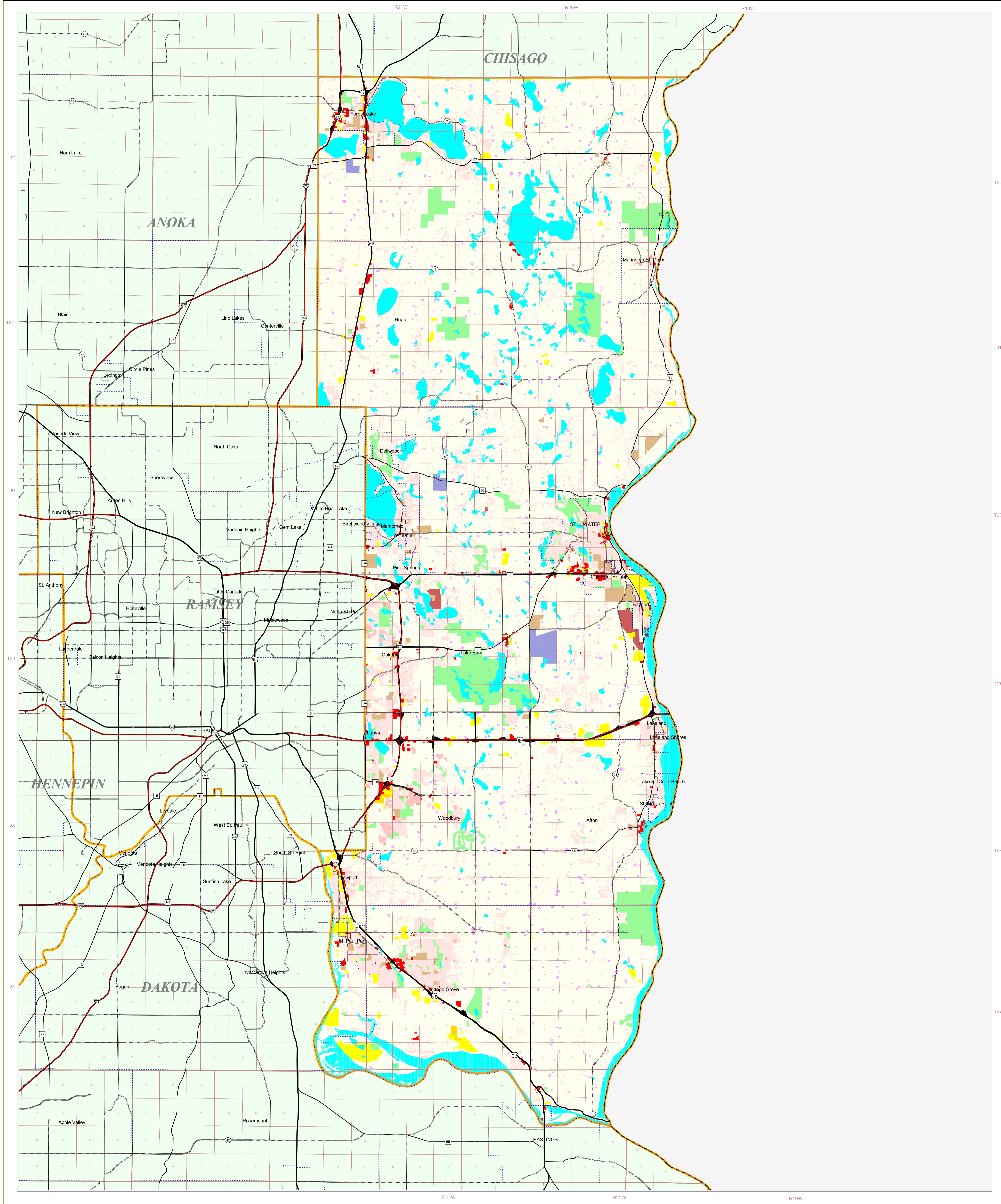


# Washington County Land Use and Cover

State of Minnesota  
1990



### MAP FEATURES

**Land Use**

- Single Family Residential
- Multi-Family Residential
- Farmsteads
- Commercial
- Industrial
- Industrial Parks not Developed
- Vacant/Agricultural
- Parks and Recreation Areas
- Open Water Bodies
- Public-Semi Public
- Public & Semi-Public Vacant
- Airports
- Major Four Lane Highways

**Cities**  
COUNTY SEAT  
Other Cities

**Highways**  
Interstate Highway  
U.S. Trunk Highway  
State Trunk Highway  
County State-Aid Highway (CSAH)

**Public Land Survey**  
State Boundary  
County Boundary  
Township and Range Section  
T34 Township  
R25W Range & Direction

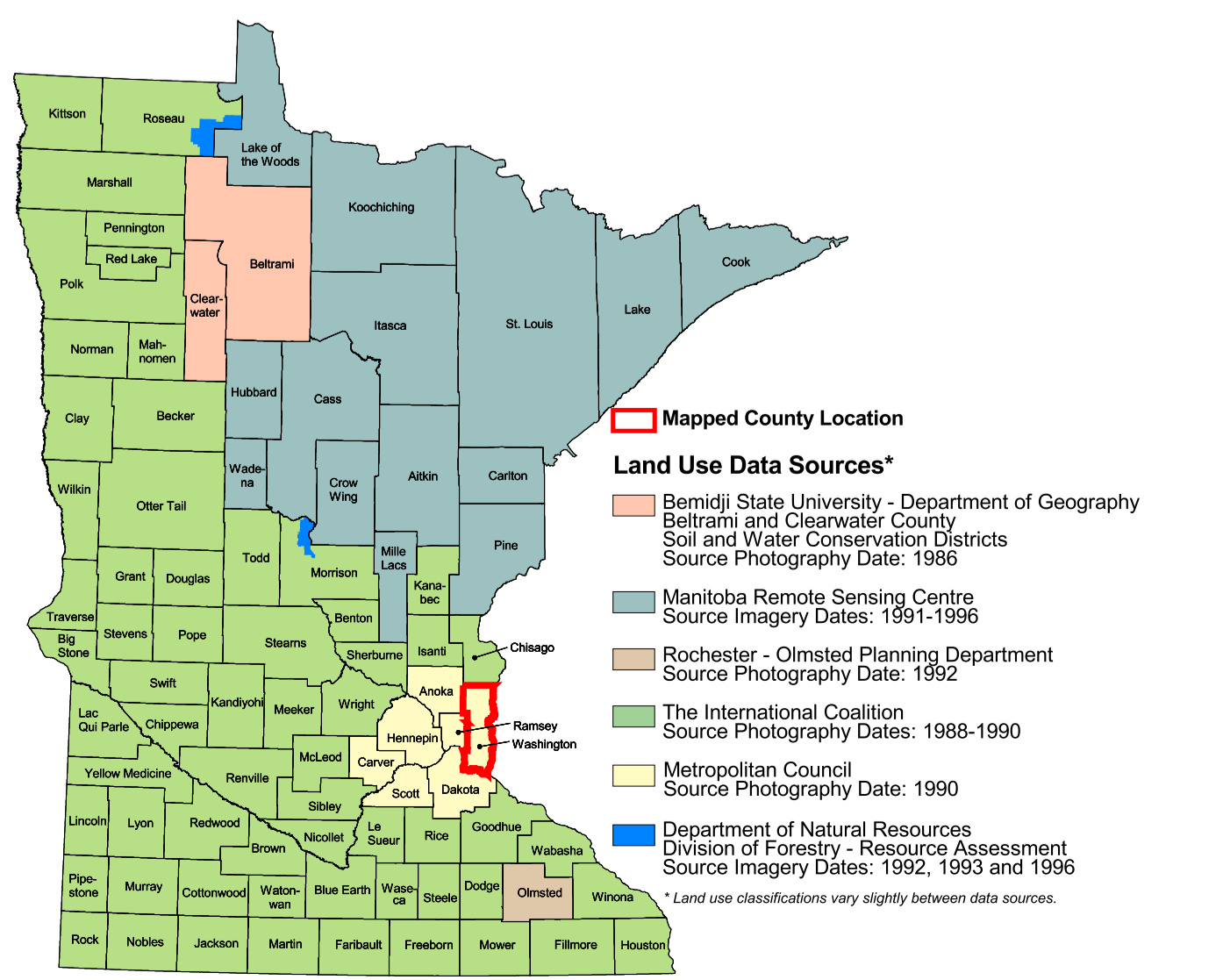
**Data Sources**

- Generalized Land Use for the Twin Cities Metropolitan Area, Metropolitan Council, 1980
- Topographic Census Files, U.S. Bureau of the Census, 1985
- Minnesota Department of Transportation, 1987/88
- Produced by the Minnesota Land Management Information Center (LMIC), St. Paul, MN, 1990

### Washington County Land Use Statistics

Source: The Land Management Information Center (LMIC)

DESCRIPTION	ACRES	% ACRES
Single Family Residential	26250.8	10.5
Multi-Family Residential	1112.9	0.4
Farmsteads	2234.9	0.8
Commercial	1692.2	0.6
Industrial	3416.1	1.3
Industrial Parks not Developed	128.3	< 0.1
Vacant/Agricultural	193077.7	71.5
Parks & Recreation Areas	11202.4	4.1
Open Water Bodies	23131.2	8.6
Public-Semi Public	2363.5	0.9
Public & Semi-Public Vacant	542.3	0.2
Airports	907.7	0.3
Major Four Lane Highways	2116.4	0.8
<b>TOTAL</b>	<b>276,176</b>	<b>100%</b>



**ABOUT THIS MAP**

**Data Sources:** The land use / land cover categories displayed on this map were derived from rectified air photos (1:38,400) taken on May 4 or May 5, 1990. Reverse directories, non-residential building permits and field checks were used when a land use could not be determined from the photos.

**Data Interpretation and Computerization:** First, air photos were rectified by Marklund to match a photo grid used by the Metropolitan Council. Corner coordinates of the air photo grid and the Minnesota Department of Transportation's digital road centerline layer (1:24,000) were used to register the photos. The photos were then interpreted by Metropolitan Council staff. Next, mylers of 1980 and 1984 land use (1:9,000) were overlain on the photos and changes were delineated. Corrections to the earlier data sets that had been submitted by cities and townships were also incorporated. Reverse directories, non-residential building permits and field checks were used when land use could not be determined from the photos. The updated mylers were digitized in a vector format as 251 individual files. The files were then edge-matched and registration corrections made using the road centerlines.

The land use / land cover data was compiled to meet National Map Accuracy Standards at the 1:24,000 scale (within approximately 16.5 meters of actual location), although some instances show offsets as large as 70 meters.

**On-line documentation:** <http://lucv.lmic.state.mn.us/metadata/luc90.html>

### Credits and Acknowledgments

Seven-county metropolitan land use data provided by:  
Metropolitan Council

**Map Projection:** UTM, Extended Zone 15  
**Date:** NAD83

**Liability Statement**

The Land Management Information Center (LMIC) does not warrant the results you may obtain by using this map. This map is provided as is without express or implied warranties, including warranties of merchantability and fitness. In no event will LMIC be liable for any consequential, incidental or special damages, including any lost profits or lost savings, even if a LMIC representative has been advised of the possibility of such damages or any other claim by any third party.

**Distribution Information**

This map was prepared in April, 1999. Both the map and the data used to create it are available from the Land Management Information Center at Minnesota Planning.

You may also view a generalized, interactive land use map of Minnesota, along with detailed information about land use data at:  
<http://mapserver.lmic.state.mn.us/landuse>

**For further assistance, or to order copies of this map, contact:**

Land Management Information Center  
608 Cedar Street  
Centennial Building, Room 330  
St. Paul, MN 55155

Phone: (651) 296-1211  
FAX: (651) 296-1212  
E-Mail: [clearinghouse@lmic.state.mn.us](mailto:clearinghouse@lmic.state.mn.us)