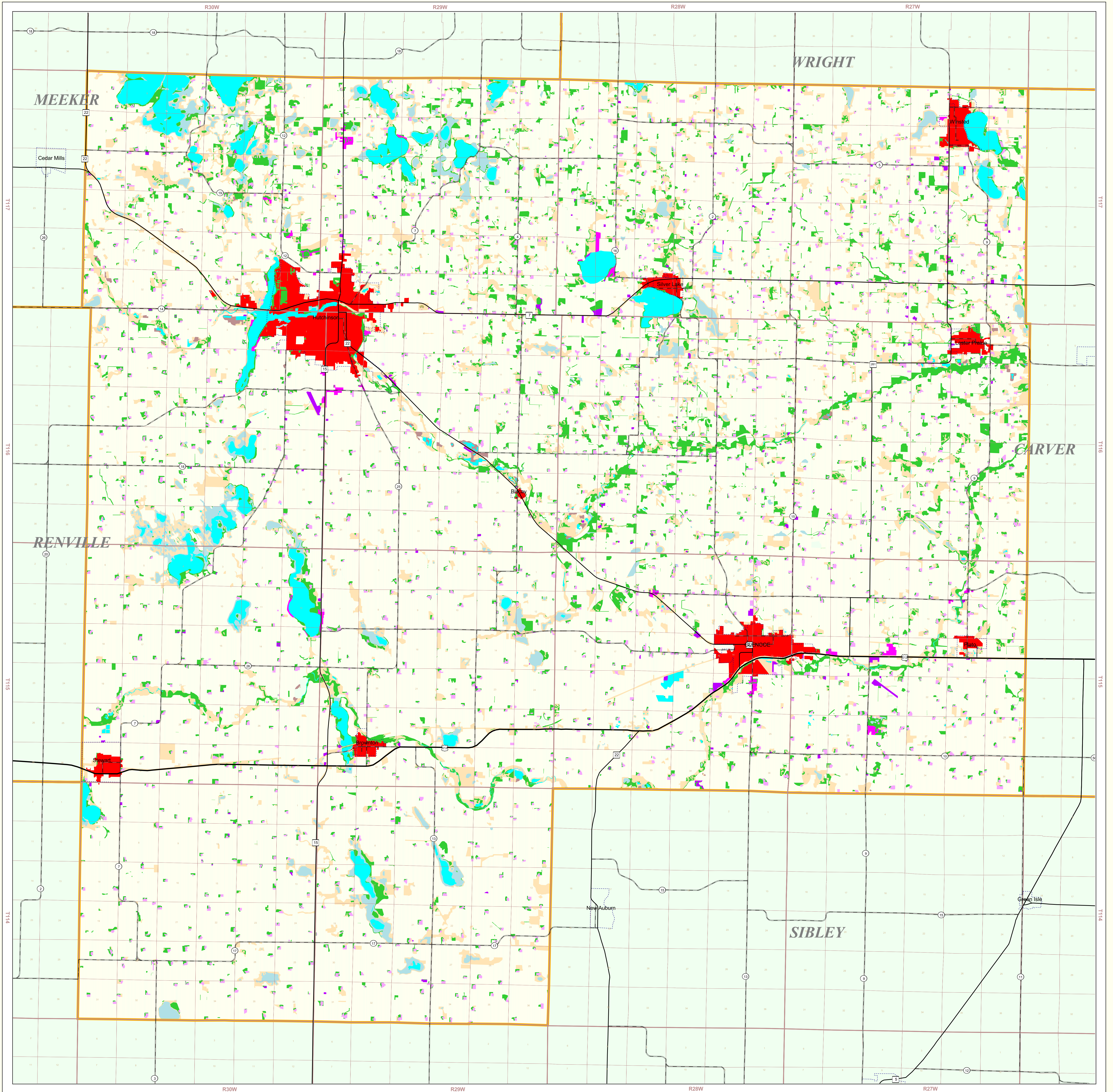


# McLeod County Land Use and Cover

## State of Minnesota

### 1988 - 1990



#### MAP FEATURES

- Urban and Industrial
- Farmsteads and Rural Residences
- Rural Residential Development Complexes
- Other Rural Developments
- Cultivated Land
- Transitional Agricultural Land
- Grassland
- Grassland-Shrub-Tree Complex (Deciduous)
- Grassland-Shrub-Tree Complex (Coniferous)
- Deciduous Forest
- Coniferous Forest
- Water
- Wetlands
- Exposed Soil and Open Mines
- Bare Rock
- Exposed Soil, Sandbars, and Sand Dunes
- Unclassified/Unlabeled/Outside State or County

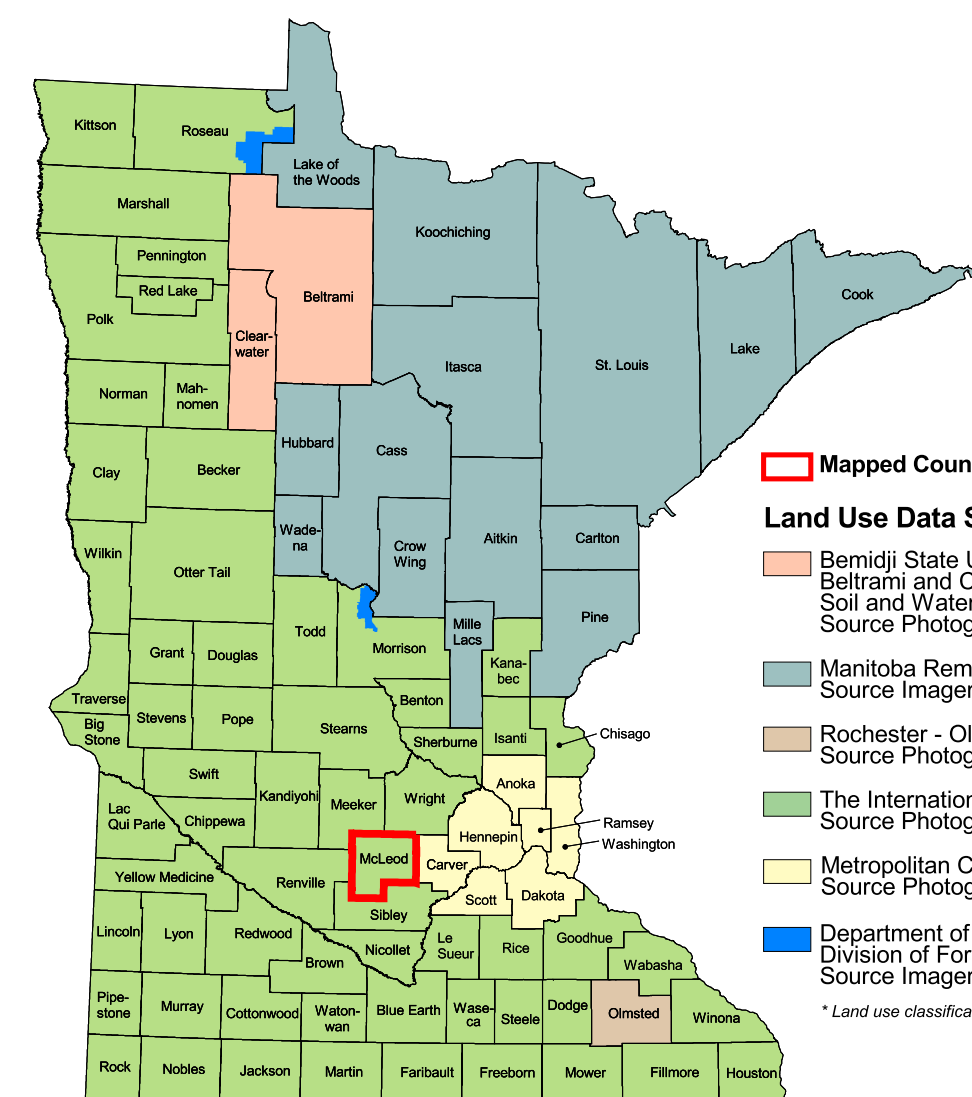
#### McLeod County Land Use Statistics

Source: The Land Management Information Center (LMIC)

DESCRIPTION	ACRES	%ACRES
Urban and Industrial	65,241	1.7
Farmsteads and Rural Residences	65,041	1.7
Rural Residential Development Complexes	1,111	0.0
Other Rural Developments	2,082	0.0
Cultivated Land	255,178	6.6
Transitional Agricultural Land	4,347	0.1
Grassland	24,617	0.6
Grassland-Shrub-Tree Complex (Deciduous)	1,574	0.0
Grassland-Shrub-Tree Complex (Coniferous)	1,692	0.0
Deciduous Forest	16,924	0.4
Coniferous Forest	7,890	0.2
Water	5,601	0.1
Wetlands	34	0.0
Exposed Soil and Open Mines	34	0.0
Bare Rock	53	<0.1
Exposed Soil	33	<0.1
Grassland (Unclassified/Outside State or Outside County)	33	<0.1
<b>TOTAL</b>	<b>39,498</b>	<b>100%</b>

#### Data Sources

- 1 The International Coordon
- 2 Produced by the Minnesota Land Management Information Center from U.S. Geological Survey GISDB, 1:100,000 scale, 30'x30' quadrangle maps published between 1977 and 1988
- 3 U.S. Bureau of the Census, 1990
- 4 Minnesota Department of Transportation, 1997-98



#### Land Use Data Sources\*

- Bemidji State University - Department of Geography, Beltrami and Clearwater County Soil and Water Conservation Districts, Source Imagery Date: 1986
  - The International Coordon, Source Imagery Date: 1986
  - Manitoba Remote Sensing Centre, Source Imagery Date: 1981-1986
  - Rochester - Olmsted Planning Department, Source Imagery Date: 1992
  - The International Coordon, Source Imagery Date: 1988-1990
  - Metropolitan Council, Source Imagery Date: 1990
  - Department of Natural Resources, Division of Forestry - Resource Assessment, Source Imagery Date: 1992, 1993 and 1998
- \*Land use classifications vary slightly between data sources.

#### ABOUT THIS MAP

Data Sources: The land use / land cover categories displayed on this map were derived from sources that included the U. S. Department of Agriculture, Agricultural Stabilization and Conservation Service's (ASCS) low altitude, section-centered, 35mm color aerial photography taken during 1968-1990 and U.S. Fish and Wildlife Service National Wetlands Inventory (NWI) 1:24,000-scale field maps. Landsat satellite images (date unrecorded) were used to verify the classifications.

Data Interpretation and Computerization: The project was coordinated by The International Coordon for Land and Water Stewardship in the Red River Basin. Land use / land cover interpretation was performed by DPA International. The smallest area interpreted was approximately 2.5 acres.

Land use / land cover information was transcribed on to stable-base mylars registered to U.S. Geological Survey 1:24,000-scale topographic maps and then digitized by DPA International or Alexandria Technical College staff. Minnesota Department of Natural Resources MIS Bureau staff then joined the digitized files together to create county coverages.

On-line documentation: <http://lucy.lmic.state.mn.us/metadata/luse89.html>

#### Credits and Acknowledgements

Data collection and interpretation supported by the Minnesota Future Resources Funds as recommended by the Legislative Commission on Minnesota Resources (LCMR).

The following groups also participated over an extended period:

- Alexandria Technical College - GIS Program
- DPA International
- The International Coordon
- Minnesota Board of Water and Soil Resources
- Minnesota Department of Natural Resources
- Minnesota Land Management Information Center
- North Dakota State University - Agricultural Engineering Department
- The Red River Management Board
- University of Minnesota - Department of Forest Resources
- University of North Dakota - Geography Department
- Wildlife, Smith and Naiting

#### Liability Statement

The Land Management Information Center (LMIC) does not warrant the results you may obtain by using this map. This map is provided "as is" without express or implied warranties, including warranties of merchantability and fitness. In no event will LMIC be liable for any consequential, incidental or special damages, including any lost profits or lost savings, even if a LMIC representative has been advised of the possibility of such damages or any other claim by any third party.

#### Distribution Information

This map was prepared in April, 1999. Both the map and the data used to create it are available from the Land Management Information Center at Minnesota Planning.

You may also view a generalized, interactive land use map of Minnesota, along with detailed information about land use data at:

<http://mapserver.lmic.state.mn.us/landuse>

For further assistance, or to order copies of this map, contact:

Land Management Information Center  
658 Cedar Street  
Centennial Building, Room 330  
St. Paul, MN 55155  
Phone: (651) 296-1211  
FAX: (651) 296-1212  
E-Mail: [clearhouse@mplanning.state.mn.us](mailto:clearhouse@mplanning.state.mn.us)

