



Minnesota Geospatial Advisory Council

December 18, 2024

Tennessees Warning

- This meeting is being recorded for **transcription purposes only**. It will only be saved in MnGeo's internal files for a limited time and will **NOT** be posted publicly.
- If you have enabled your camera during the meeting, the recording may include your image, which is **private data** under the Minnesota Government Data Practices Act. You are not required to allow MNIT to use your image, and there are no consequences for declining to do so. To opt-out of the recording simply turn off your camera.
- Please note that the **content of all chats** is subject to the Minnesota Government Data Practices Act.

Agenda Item 1

- **Call to Order**

- Introductions
- GAC mission reminder
- Approve agenda
- Approve last meeting minutes
(September 18, 2024)

Albrecht



Member Introductions

- **City, Twin Cities metro**
 - Dennis Tumberg, City of Chanhassen
- **City, Greater Minnesota**
 - Vacant
- **County, Twin Cities metro**
 - Victoria Reinhardt, Ramsey County
- **County, Greater Minnesota**
 - Christy Christensen, McLeod County
- **Regional Government, Twin Cities metro**
 - Tanya Mayer, Met Council
- **Regional Government, Greater Minnesota**
 - Jill Amundson, West Central Initiative
- **State Government**
 - Kari Geurts, DNR
 - Ben Timerson, MnDOT
- **Federal Government**
 - Jeff Bloomquist, Risk Management Agency, USDA
 - Mitch Bergeson, US Geological Survey
- **Tribal Government**
 - Ryan Bonney, Shakopee Mdewakanton Sioux Community
- **Non-profit Organization**
 - Jessica Fendos, LOGIS
- **Business**
 - Kendis Scharenbroich, Pro-West & Associates
 - Gerry Sjerven, Minnesota Power
- **K-12 Education**
 - Shana Crosson, U-Spatial / UMN Twin Cities
- **Higher Education**
 - Len Kne, U-Spatial / UMN Twin Cities
 - Stacey Stark, U-Spatial / UMN Duluth
- **MetroGIS**
 - David Brandt, Washington County
- **MN GIS/LIS Consortium**
 - Leanne Knott, City of Red Wing
- **Surveyor**
 - Pat Veraguth, Douglas County
- **At-large**
 - Cory Richter, Ramsey County
 - Heather Albrecht, Hennepin County
 - Britta Maddox, Anoka County
- **Chief Geospatial Information Officer (ex-officio)**
 - Alison Slaats, MnGeo

Non-Member Guests

First and last name

Name of your organization

(Place in the chat)

The Council acts as a coordinating body for the Minnesota geospatial community. It represents a cross-section of organizations that include counties, cities, universities, business, nonprofit organizations, federal and state agencies, tribal government, surveyors and other stakeholder groups that benefit from geospatial technology.

Agenda

Time	Topic	Time	Topic
10:00	Call to order	10:55	Break
10:10	Review and accept Committee Reports	11:05	Executive Team Goals Update
10:15	Farewell to Commissioner Reinhardt	11:25	MnGeo Update
10:20	National Geospatial Advisory Committee Update	11:35	GIS Day Recognition and Round Robin
10:25	Archiving Committee Proposal	11:50	Round Robin / Announcements
10:35	Outreach Committee Update and Call for Volunteers	12:00	Adjourn

Approve agenda

Approve last meeting minutes

(September 18, 2024)

Committee Reports – Review and Accept All



GAC Committee Report Highlights

3D Geomatics Committee

- R&D work developing protocols for data architecture, efficient data storage and dissemination, and lidar-derived products.
- Note that MnTopo-1 still references legacy data.

Contributing to Nationwide and Commercial Data Assets Committee

- Successfully shared Centerlines and Address Points from 10 counties with the Esri Community Maps.
- This data is now being used in the Esri World Geocoding Service.

Emergency Preparedness Committee

- Development of a mapping application to aggregate interagency utility geospatial data, FuzionView (fuzionview.org), 90% complete and has passed Beta certification.

Farewell to Commissioner Reinhardt Albrecht / Slaats



Certificate of Appreciation

On behalf of MnGeo, Mn GIO Alison Slaats, and the GAC members we are recognizing **Commissioner Victoria Reinhardt's** contributions to the GIS community, GIS profession, and movement on GAC priorities.

- Founding member of MetroGIS and was an active leader of the policy board
- A member of the Governor's Council on GIS, precursor to the GAC
- Involved with the GAC for 15 years, since its inception in 2009
- Testified to congress about GIS and its collaborative role in supporting policy
- Provides the perspective and guidance of an elected official to the GAC

Certificate of Appreciation



National Geospatial Advisory Committee Update

Mattke



National Geospatial Advisory Committee - Updates

Ryan Mattke | NGAC Committee Member

The purpose of the NGAC is:

1. Provide advice and recommendations on:
 - a) managing Federal and national geospatial programs,
 - b) developing the National Spatial Data Infrastructure, and
 - c) implementing the [Geospatial Data Act](#).
2. Review and provide feedback on geospatial policy and management matters.
3. Ensure that the perspectives of non-Federal stakeholders engaged in national geospatial activities are communicated to the FGDC.

SEC. 754. NATIONAL GEOSPATIAL ADVISORY COMMITTEE.

(a) ESTABLISHMENT. —The Secretary of the Interior shall establish within the Department of the Interior the National Geospatial Advisory Committee to provide advice and recommendations to the Chairperson of the Committee.

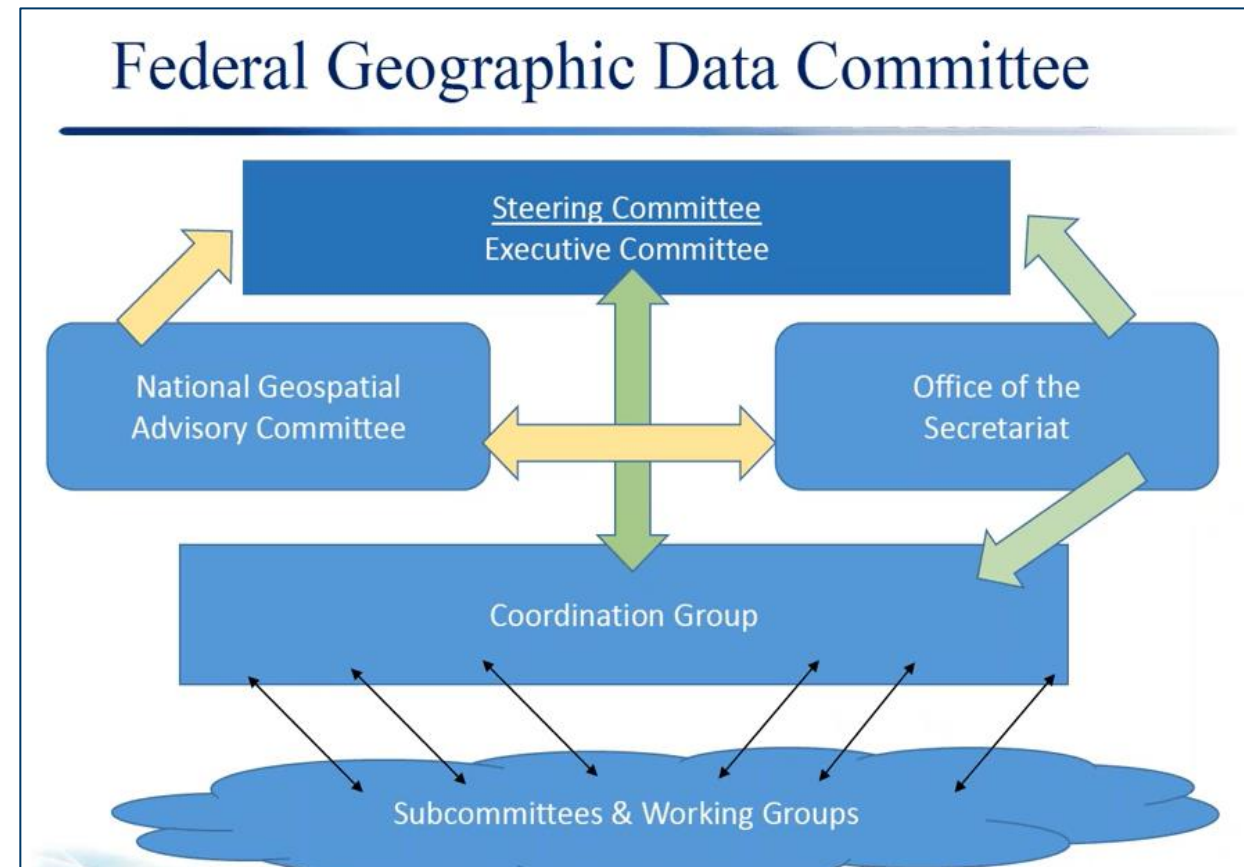
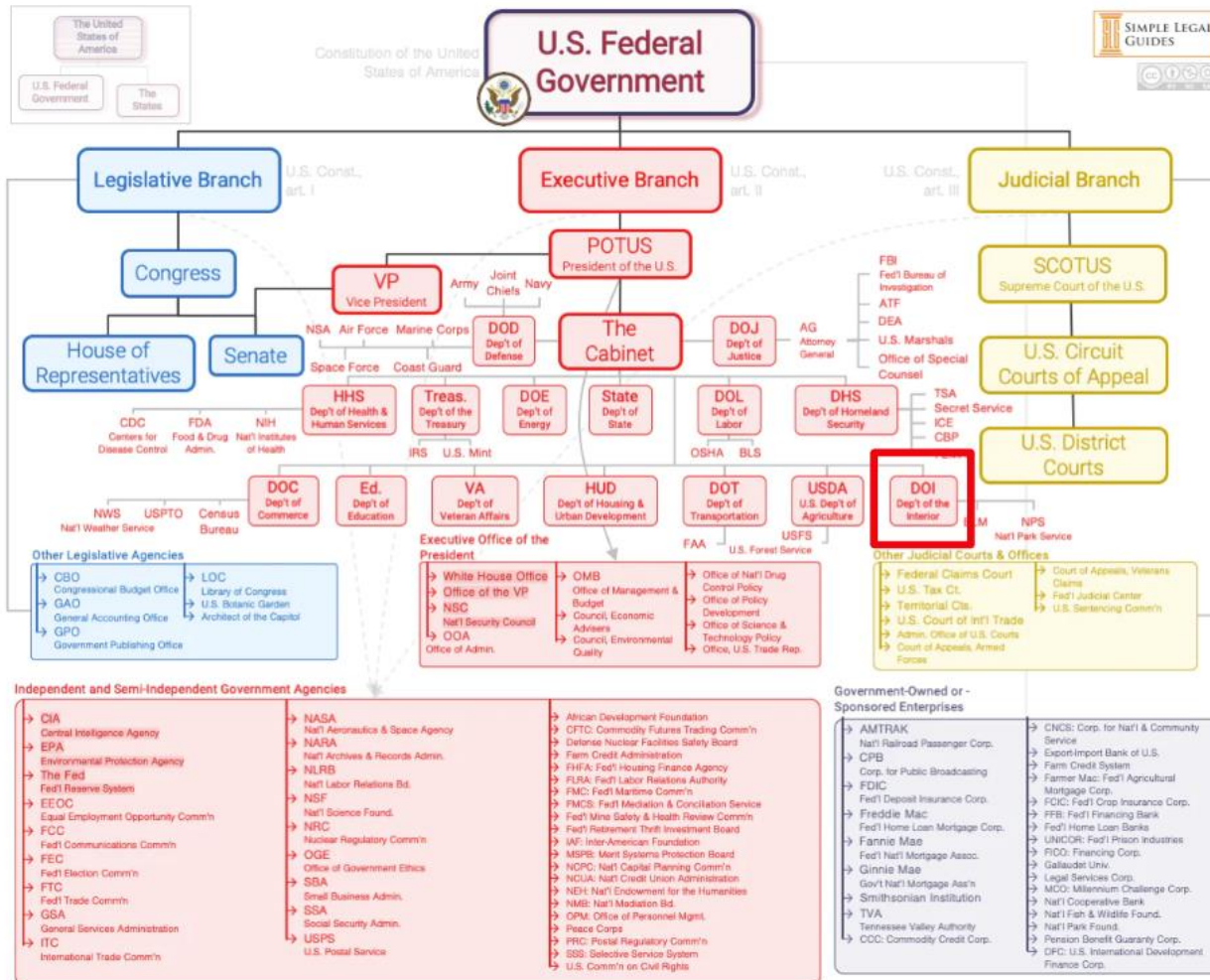
Extract of “*Geospatial Data Act of 2018*” (GDA), (P.L. 115-254), H.R. 302, Subtitle F, Sections 751 – 759

Subtitle F—Geospatial Data

SEC. 751. SHORT TITLE; FINDINGS.

- (a) SHORT TITLE. —This subtitle may be cited as the “Geospatial Data Act of 2018”.
- (b) FINDINGS. —Congress finds that—
- (1) open and publicly available data is essential to the successful operation of the GeoPlatform;
 - (2) the private sector in the United States, for the purposes of acquiring and producing quality geospatial data and geospatial data services, has been and continues to be invaluable in carrying out the varying missions of Federal departments and agencies, as well as contributing positively to the United States economy; and
 - (3) over the last 2 decades, Congress has passed legislation that promotes greater access and use of Government information and data, which has—
 - (A) sparked new, innovative start-ups and services;
 - (B) spurred economic growth in many sectors, such as in the geospatial services;
 - (C) advanced scientific research;
 - (D) promoted public access to Federally funded services and data; and
 - (E) improved access to geospatial data for the purposes of promoting public health, weather forecasting, economic development, environmental protection, flood zone research, and other purposes.

Federal Context



National Spatial Data Infrastructure

National Spatial Data Infrastructure (NSDI)

- “the technology, policies, criteria, standards, and employees necessary to **promote geospatial data sharing** throughout the Federal Government, State, tribal, and local governments, and the private sector (including nonprofit organizations and institutions of higher education).”
- “shall ensure that geospatial data from multiple sources (including the covered agencies, State, local, and tribal governments, the private sector, and institutions of higher education) is **available and easily integrated** to enhance the understanding of the physical and cultural world.”



Open Geospatial Consortium.
<https://www.ogc.org/blog-article/evolving-spatial-data-infrastructure/>

NSDI Strategic Plan 2025 - 2035

Overall Goals

- **Governance** – “emphasizes the need for nationwide participation, resourcing, and accountability in NSDI decision-making, alongside effective national-level oversight and management mechanisms. This includes refining policy and legal frameworks to support data management, sharing, and use, and identifying and meeting financial resource needs for successful implementation.”
- **Data and Technology** – “focuses on modernizing infrastructure and leveraging advanced technology to improve data usability, quality, accessibility, and interoperability.”
- **People** – “underscores the importance of building a skilled and inclusive geospatial workforce that is equipped to advance and leverage the full potential of the NSDI by applying transdisciplinary skills.”

<https://www.fgdc.gov/nsdi-plan/NSDI2035>

Takeaways

- **National plan, not a Federal plan**
- **All sectors are encouraged to read it and see where they can contribute** – “Achieving the NSDI vision is dependent on all sectors, because each one brings unique expertise, strengths, and capabilities to the NSDI. All sectors are key participants in the implementation of the NSDI and must actively participate in its implementation planning and execution. Successfully achieving the vision relies on the broad participation of all sectors to plan, program, and implement the NSDI.”
- **Use the plan as leverage** – “This strategic plan provides a framework for agencies, organizations, and individuals to use when developing the specific actions they plan to take to achieve the plan’s goals and objectives.”

NGAC Recommendations

3DEP Subcommittee

Potential Academic Collaboration with the 3DEP Research Program – The 3DEP Subcommittee recommends that USGS engage with the research community to hold a Community Meeting related to further advancement of the 3DEP research plan and to explore common interests and opportunities.

USGS should participate with ASPRS, JALBTCX, and NOAA on the evolution of Total Propagated Uncertainty Modeling – The result will provide the 3DEP Program with specific data elements to assess existing technologies, and potential innovative technologies. The data elements should be reviewed annually for effectiveness.

[recommendation documents not posted yet]

Landsat Advisory Group

[Comments On The 2030 Earth Observation Data Challenge - Interagency Operational Efficiencies](#)

Position Papers and Reports

- **NSDI Subcommittee** – Near Term Opportunities paper [February 2025]
- **NSDI Subcommittee** – Best Practices for Publishing Geospatial Data to the Web paper [February 2025]
- **NSDI Subcommittee** – Required & Recommended Metadata Elements paper [February 2025]
- **NSDI Subcommittee** – Data Accessibility paper [February 2025]

Forthcoming

FGDC Standards Task Team – will likely consist of members from DoT, Census, GSA, USDA, State Dept, EPA, DHA, and NGA. Will nominate standards to be endorsed.

Draft proposals would include endorsing interoperability standards such as ISO 19115: Geographic Information – Metadata, NARA Geospatial Formats, Web Map Services, and KML; and would include retiring standards such as CSDGM FGDC metadata standard.

Draft proposals for minimum content standards for Cadastral Data, Classification of Wetlands and Deepwater Habitats, Governmental Unit and Other Geographic Area Boundaries, Geopolitical Entities/Names/Codes, and Geographic Names Information System.

Thank You!

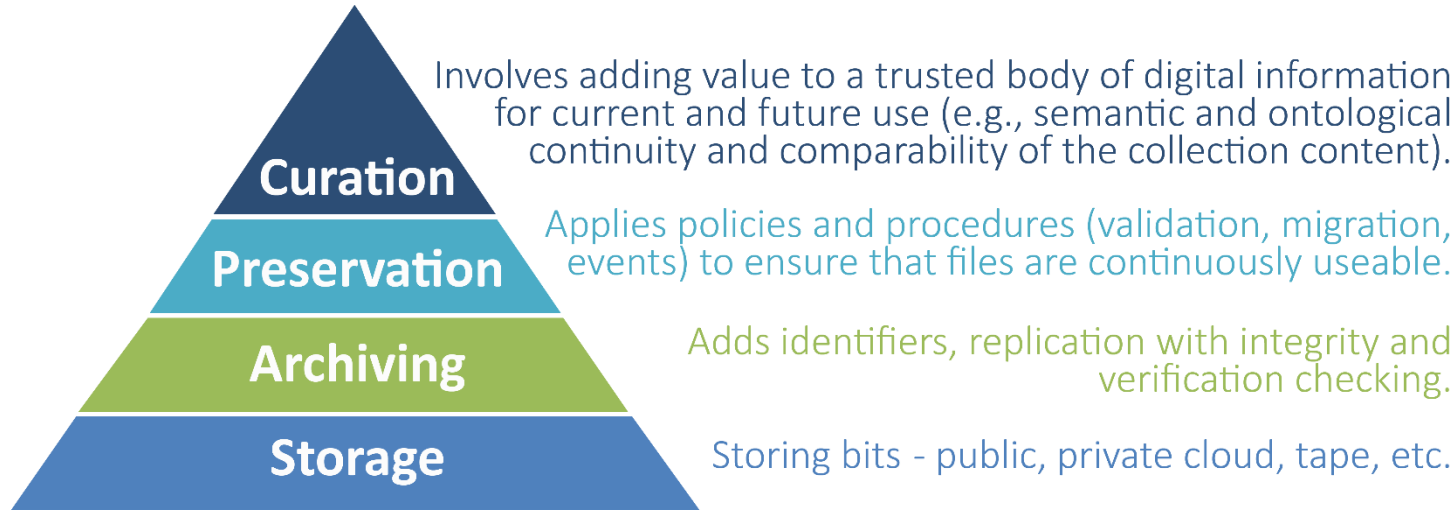
Ryan Mattke

matt0089@umn.edu

Archiving Committee Proposal Mattke



Digital Stewardship Pyramid



Archiving Committee Proposal

Ryan Mattke | Geodata Archive Implementation Priority

Previous Workgroup Reports

December 2022 - [Archiving Imagery Workgroup Final Report](#) and [description of geospatial imagery formats](#)

- Summary of the workgroup's key findings from its research, community outreach and public survey

March 2022 - [Archiving Pilot Workgroup Final Report](#)

- Summary of the workgroup's accomplishments, key findings, future considerations, next steps and future plans

February 2021 - [Archiving Implementation Workgroup Final Report](#)

- Summary of the workgroup's accomplishments, key findings, future considerations, next steps and future plans

August 2019 - [Archiving Workgroup Summary Report](#)

- Summary of the workgroup's accomplishments, key findings, future considerations, next steps and future plans
- Summary of [Archiving Strategy Subgroup Report](#), [Priority Datasets Subgroup Report](#), and [Archiving Agreement - Guidelines and Recommendations](#)

Context and Current Opportunity

Big Ten Academic Alliance Geospatial Information Network

- Current collection policy covers metadata records for geodata and historical scanned maps.
- Expanded policy includes a curated collection of public geodata.
- Looking for pilot partners

<https://gin.btaa.org/library/geodata-collection-strategic-plan/>

BIG ACADEMIC ALLIANCE **Geoportal** About Collection Stories Help Feedback




Search... Search

Clear search You searched for: Resource Class > Datasets

Provider > Minnesota Geospatial Commons Bounding Box > -93.139014 44.890175 -93.00889...

Limit your search

« Previous | 1 - 10 of 723 | Next »

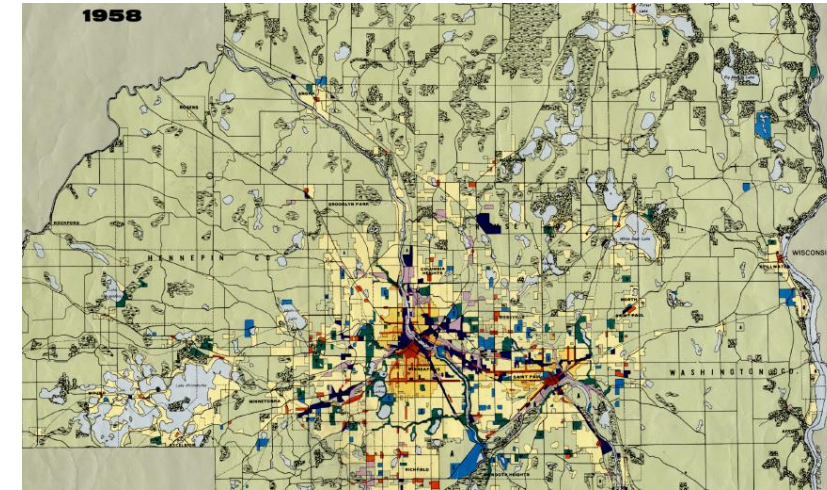
- 1. Administrative Boundaries [Minnesota--Ramsey County]**
 Minnesota--Ramsey County. This file geodatabase contains datasets that represent municipal boundaries, commissioner district boundaries, precincts and park boundaries. The ...
- 2. Elevation Data [Minnesota--Ramsey County]**
 Minnesota--Ramsey County. This file geodatabase contains datasets that represent elevation data. The following links can be used to obtain individual metadata pages: Cont...
- 3. Environmental Data [Minnesota--Ramsey County]**
 Minnesota--Ramsey County. This file geodatabase contains datasets that include soil survey (SSURGO) and open water. The following links can be used to

Map: Saint Paul, Minnesota. Search when I move the map . CLICK OR HOVER TO WAKE. Leaflet | © OpenStreetMap contributors

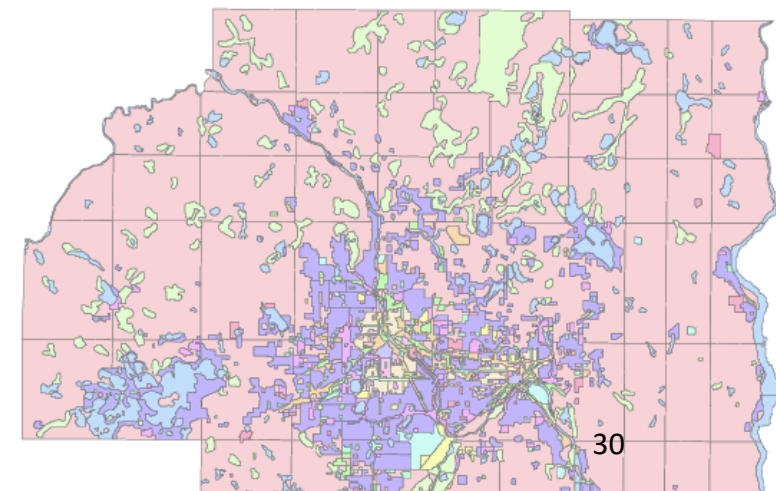
Historical GIS Data Example

Land Use data

- **GIS data existed for Twin Cities historical land use**
 - Created by the Met Council
 - Historical data back to 1984 available via MN Geospatial Commons
- **Faculty member in Civil Engineering needed earlier data**
 - Hired a graduate student to digitize data for 1958, 1968, and 1978 from paper maps
- **Data has been downloaded 610 times in the past ten years**
 - As of 2018, data had been downloaded 230 times



Twin Cities Land Use 1958



Archiving Committee - Objectives

Objectives

1. Establish a statewide archiving framework
2. Foster collaboration across sectors
3. Align with existing efforts
4. Educate and advocate
5. Monitor and evaluate progress

Deliverables

1. An operational framework
2. Community engagement
3. Documentation

Archiving Committee – Mission (Discussion)

Mission Statement – Thoughts?

- The Archiving Committee works to develop strategies for preserving geospatial data in Minnesota. Its mission is to advise the state geospatial community on archiving issues, recommend policies and procedures, and ensure that valuable geospatial data is preserved and remains accessible for future use.

OR

- The Archiving Committee is dedicated to establishing Minnesota as a national leader in geospatial data preservation. By advising the state geospatial community on best-in-class archiving practices, shaping forward-thinking policies and procedures, and fostering collaboration across sectors, the committee ensures that Minnesota's valuable geospatial data is not only preserved but leveraged to drive innovation and benefit future generations.

Next Steps

- **Recruit volunteers** – need representation from:
 - MnGeo, Government agencies at all levels (state, regional, county, city, etc.), Tribal government, Researchers, users of historical geospatial data, Higher Education, Non-profit organizations, Private sector
- **March 2025 GAC Meeting** – Submit Committee Charter and Workplan for GAC approval

Thank You!

Ryan Mattke

matt0089@umn.edu

Outreach Committee Update and Call for Volunteers Fendos



Outreach Committee Leadership and Volunteers

Jessica Fendos | Outreach Committee

Outreach Committee Status Quo

- Previous Committee Chair, **Andra Bontrager**, is stepping away
- A group met on Dec. 9th to discuss transition
- **Jessica Fendos** has agreed to step up to work with workgroup leads and recruit new members to advance GAC priorities and fulfill Outreach Committee goals.



Revisiting Outreach Committee Charter

Committee Mission: Promote the value and importance of the geospatial infrastructure by facilitating geospatial story telling ~~and actively engaging~~ **(to actively inform?)** public policy makers and stakeholders.

Objectives/Vision: As a committee of the Minnesota Geospatial Advisory Council, the Outreach Committee will promote the priorities of the council.

Tell geospatial stories in venues where they can inform and influence policy makers and others seeking to improve government operations, economic development, and quality of life in Minnesota.

- **Create a foundation for open data** in Minnesota by connecting with local government representatives to increase the availability of free geospatial data for all Minnesotans.
- Develop and provide guidance for content maintenance of **Esri Hub sites for the GAC and its committees.**
- Promote the work of the GAC, its committees through ~~social media outreach~~ **(public engagement, web presence and award recognitions). Coordinate with MnIT Communications and MnGeo to establish Communication guidelines for the GAC.**

Action Items by March 2025 meeting

- **Recruit:** Carla Coats and Jeff Kalar (participation confirmed). Potentially Chris Cantey & Shana Crosson. Others are welcome and strongly encouraged to join!!! *A sign up survey link will be provided during the Dec. 18th MnGAC meeting.*
- **Meet:** Recurring monthly Outreach Committee meetings will be held starting Jan. 2025
- **Make Progress:** Results will be shared during the March 2025 GAC Meeting
 - Present proposed language used in the Outreach Committee Charter
 - Introduce new members
 - Learn from the process developed by the Success Stories Workgroup
 - Recommend an action plan to advance Outreach priorities starting 2025
 - Propose ideas to expand the GAC's reach

Future Ideas in Creating Win-Win

- **Public Engagement and Publications**

- GAC Committee Hub Sites and county Open Data alliance building
- A booth at the GIS/LIS Consortium Conference, an event grant, or a lightning round presentation on top achievements of GAC
- Submit articles to Esri ArcWatch

- **Award Recognitions**

- Minnesota Governor's Certificate's Award
- Esri President's Award, Make a Difference Award, Enterprise GIS Award, Special Achievement in GIS Award.
- NSGIC Geospatial Excellence and Service Awards (for projects and individuals)

Join Us!



<https://survey123.arcgis.com/share/f64cc669a72147a184c6027cf623f537>

Thank You!

Jessica Fendos

jfendos@logismn.gov

763-543-2638

Agenda Item 7

Break



Executive Team Goals Update Albrecht



Mission: The Executive Team of the MN Geospatial Advisory Council supports the functions of the GAC. The Executive Team authors the GAC workplan and aligns the activities of the GAC to adhere to the plan. The Executive Team supports the GAC by organizing the quarterly public meetings, gathering feedback from the GIS community through the priority surveys, and ensuring the committee work supports the priorities.

Update to the GAC Executive Team goals

Heather Albrecht | Chair, Geospatial Advisory Council

GAC Executive Team Goals

- Increase duration of priority project work to align with full GAC term
 - Completed
- Align GAC committees and priority projects
 - In Progress
- Improve committee and workgroup reporting
 - In progress
- Increased participation of GAC committee and sectors in meetings
 - Future phase
- Replace GAC website and committee pages with Esri Hub
 - In progress
- Additional GAC member support for committees
 - In progress
- Ease transition of GAC membership and leadership between terms
 - Future phase

Priority Project Prioritization

- Bi-yearly GIS Priority Projects survey of user community aligned with term
- Increase duration of priority project work to align with full GAC term
- Priority project assessment conducted in 2023
- Guided priority project teams through the 2023/2024 GAC term
- Next assessment scheduled for fall of 2025 to set the priorities of the FY 2026/2027 GAC term

Committee and Priority Project Alignment

Project or Initiative Name	Status	PriorityOwner	Proposed GAC Committee	Alternative
K-12 GIS Resources Group	New	Shana Crosson	K-12	
Lidar Data	Active	Gerry Sjerven	3D Geomatics	
Hydro-DEMs	Active	Sean Vaughn	3D Geomatics	
Culvert Data Standard	Active	Rick Moore	3D Geomatics	
Geodata Archive Implementation	Active	Ryan Mattke	proposed Archiving Committee	
Publication of Open Foundational Datasets	Active	Dave Brandt	CANDO Ad hoc Committee	
Underground Utilities Data Sharing Team	Active	Steve Swazee	Emergency Preparedness	
Critical Infrastructure Data Workflow	Active	Stacey Stark	Emergency Preparedness	
U.S. National Grid Materials	Active	Randy Knippel	Emergency Preparedness	
Statewide Imagery Program	Recruiting	Jennifer Corcoran, Christy Christensen		
Parcel Data	Active	Heather Albrecht	Outreach	
Road Centerline Data	Active	Heather Albrecht	Outreach	
Address Points Data	Active	Heather Albrecht	Outreach	
Success Stories for Geospatial Technology	Active	Len Kne	Outreach	
Re monumentation of all Section Corners	Active	Pat Veraguth	PLSS Preservation	
Updated and Aligned Boundary Data	Active	Preston Dowell	Parcel and Land Records	
Statewide Survey Records Inventory	New	Pat Veraguth	PLSS Preservation	changed from Parcel and Land Records to PLSS Preservation
Geospatial Commons Advisory Group	Active		Commons/MNIT lead	
Statewide County Boundary Dataset	New	Ben Timerson	Parcel and Land Records	State Agency GIS Collaborative?
More fully attributed statewide parcel data	New	Stacey Stark	Outreach	Parcel and Land Records
State-hosted GIS Servers with Feature Services	Active		Commons/MNIT lead	

Quarterly Reporting Improvements

- Reporting on GAC Priority Projects will be rolled up into committee reports
 - GAC Committee reports are collected using an Esri Survey 123 form which is formatted for the agenda packet
 - The Committee reporting form was updated with additional fields to capture information about the Priority Projects which are aligned with the Committee
 - Priority Project owners shared their quarterly status update with the aligned Committee
 - The Priority Project updates were reported through the tool and included in the agenda packet
 - The Priority Project Esri Survey 123 form was retired
- Still to do, is a software scan of available options for reporting to ensure Esri Survey 123 is the best tool for the job.

- Desire to transition the GAC web presence to an Esri Hub
 - This goal is in the early phases
 - Outreach committee chair Jessica Fendos has identified this as a priority and is looking to form a work group to support this effort
 - For that reason, we consider this goal in progress

GAC Member as Committee Vice-Chair

- Proposal to add GAC member to Committee leadership as Vice-Chair
 - Assists as a representative to the GAC, ensuring alignment and consistency with GAC policy and communication/documentation standards
 - Supports the development of the Committee Hub
 - May be new to the Committee and less familiar with the past work success and Committee history
 - Potentially not as familiar with the area of expertise
 - Committees with a GAC member serving as Chair may choose not to add a Vice-Chair position
 - This proposal applies to stand alone workgroups that are not associated with a Committee.

Committee Chair and Co-Chairs

- Current GAC Committee Chair:
 - Subject matter expert
 - Has given substantial volunteer time commitment to the effort
 - Has demonstrated leadership to date
 - May already be a GAC member

Reminder: Every GAC member should participate in one priority project workgroup or GAC Committee.

Current Status of Committee Leadership

Committee / Standalone WG	Committee or Standalone WG	GAC Member Leader?
3D Geomatics	Committee	Yes
Awards	Committee	Yes
Emergency Preparedness	Committee	Yes
Outreach	Committee	Yes
Parcels and Land Records	Committee	Yes
PLSS Preservation	Committee	Yes
K-12	Committee	Yes
Standards	Committee	No
Contributing to Nationwide and Commercial Data Assets	Ad hoc Committee	Yes

Committee and Sector Presentations to GAC

- Each committee will present at (a minimum of) one quarterly GAC meeting during the 2-year GAC appointment term/priority cycle
- Priority project updates will be included in agenda packets, presentations will be upon request
- Some of the GAC meeting time previously allotted to priority project updates will be allocated to sector reports
- Round robin updates will be reinstated at the end of each meeting for any GAC member or guest to make an industry relevant announcement

GAC Membership and Committee Chair Retreats

- GAC retreats outside of regularly scheduled GAC meetings
- Prior to the first GAC meeting of a new 2-year member term, Executive Team will host a GAC membership overview for new and returning members to set the stage for understanding the GAC and what is involved with the 2-year commitment.
- Yearly, Executive Team will host a gathering of committee chairs to align priorities across the Committees, GAC membership, and the GIS community.

Thank You!

Heather Albrecht

Heather.Albrecht@hennepin.us

MnGeo Updates Slaats



Government-Owned Lands Dataset

Overview

- The Government owned lands is a derived subset of the aggregated parcel dataset.
- The dataset contains parcels with the following government ownership types:
 - **State**
 - **Tax Forfeit**
 - **County Fee**
 - **Federal**
 - **Tribal**
- Classification is based on handful of fields from the GAC's standard parcel data schema
- Cities, Townships, Port Authority and school lands are not included in this version but *may* be included in future releases.



Government-Owned Lands Dataset



Process

- The initial dataset was developed by the DNR – MnGeo will refine and maintain
- County parcel data was carefully reviewed, and queries were developed for each county to identify government holdings.
- A request was sent to all counties inviting each to review their county's data and the queries used (Key field report).
- We received feedback from about half of the counties to date, most requested minimal changes.
- Feedback is being used to refine the dataset. Once changes have been made, counties will be invited to review again before the data is published.
- Once complete, the data will be shared using the same protocol as the parcel data.

Government-Owned Lands Dataset

Purpose

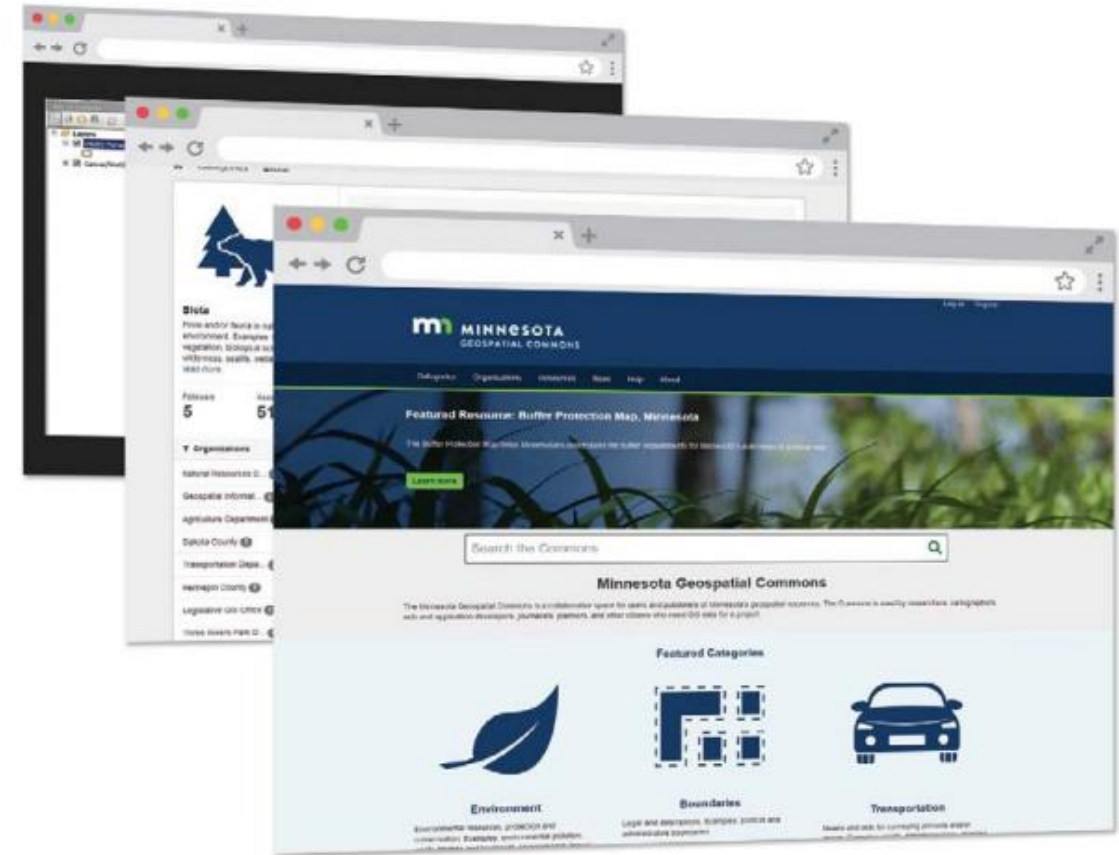
- Identify potential areas for collaborative conservation efforts between the Department of Natural Resources and various conservation partners.
- Assess watershed areas and determine the proportion of protected land versus land open to development.
- Identify private landowners in proximity to known Chronic Wasting Disease cases.
- Exclude government-owned lands from certain analysis where private ownership is critical (like DEED Broadband)
- Secure funding for infrastructure projects by identifying counties with varying levels of government-owned land.



[The Government-Owned Lands of Minnesota Story Map](#) highlights additional examples of the importance of collecting, using and maintaining this parcel-level data.

Update: Modernization of the Geospatial Commons

- MnGeo applied for, and received funds from the [MNIT Technology Modernization Fund](#)
- The Minnesota Geospatial Commons technology is aging, and 10 years old
- TMF funding will enable **modernization** of Commons technology from a **file-based system to a web service model** and **improve user and publisher experience**



Status update: Geospatial Commons Modernization

Fall 2024: Work on three proof of concepts

Proof of Concept Description	Status
Replacement of the current data sharing through GDRS with an updated web file sharing through Azure NetApp files (for State agencies)	Completed
External collaboration through ArcGIS Online and ArcGIS Hub (MnGeo & Hennepin County)	Completed
State agency collaboration through ArcGIS Online and ArcGIS Hub	In progress



Status update: Geospatial Commons Modernization

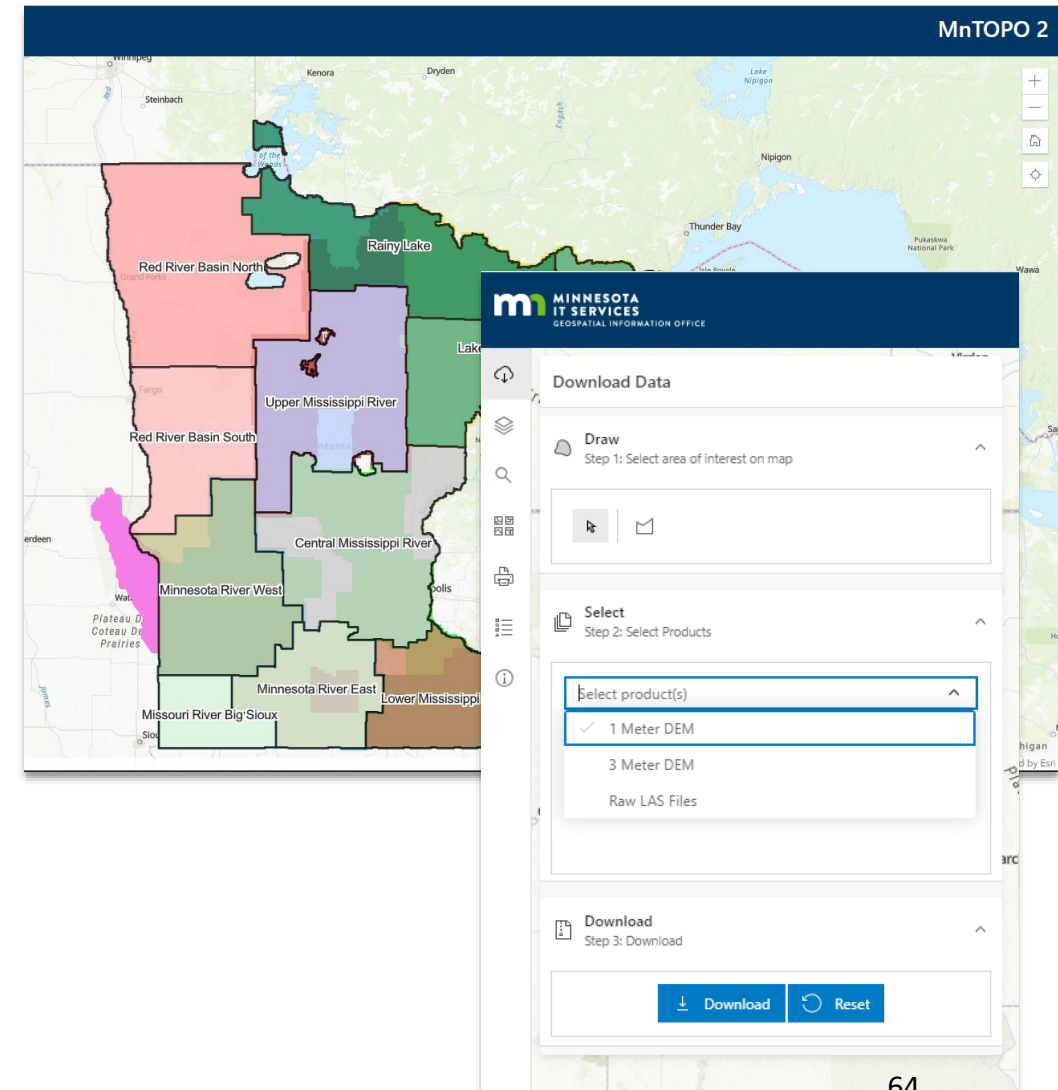
Current challenges

- Staff resources
 - MNIT teams at DNR and DOT are sharing resources
 - External consultants are being considered
- Timeline is at risk
 - Timeline extension anticipated to September 2025



Update: Lidar data distribution and derivatives

- MnGeo, in partnership with the GAC 3DGeo committee, is building **MnTOPO 2** to share MN lidar data and derivatives
- The 3DGeo team is working on derivative creation methodologies and products with support from MnGeo.
- In short term, lidar data, such as NE data, is available on the **USGS National Map**



Lidar Data Storage and Products Status

- Work in progress to create authoritative seamless data products for three Lidar Acquisition Blocks (LABS) by SMEs from the 3DGeo Derivatives Sub committee
 - Missouri River/Big Sioux
 - Lower Mississippi/Southeast MN
 - Central Mississippi
- Process includes organizing data by 3DGeo's tiling scheme and eliminating expected overlaps that occur between and within LABs.
- Identified resources for sharing metadata and commenced development work for hosting metadata.

Current work on the Authoritative Data Products

- **Source dataset:** 2nd Generation lidar data delivered by vendors
- **Deliverables:**
 - Minnesota's authoritative 1k tile lidar Digital Elevation Models (DEMs) in Cloud Optimized GeoTiff (COGTIFF) format.
 - Image services for use in desktop and web applications
 - The initial statewide 0.5m DEM Image Service created with data from the Missouri River Big Sioux LAB was made available for testing by selected SMEs in October 2024, feedback was received and will be used in reconfiguring image service.
 - Additional services related to derived products below will also be created once the data products are in place.
 - Metadata for Statewide dataset and LAB level mosaics.

Upcoming Authoritative Data Work

- DEMs in other resolutions, Contours, Hillshade, Hydrographic Position Index (HPI) will be initial derivatives created.
- Other lidar derived products include Digital Surface Model (DSM), Hydro Breaklines, Lidar Point Cloud Tiles, Normalized Digital Surface Model (nDSM) and Building Footprints.
- 3D Buildings still needs stewards/creators.
- Process for creating seamless, authoritative statewide datasets for remaining LABs will be in place.
- System Production environment is dependent on satisfactory results from work related to the initial group of 3 LABs.

State agency created derivatives

Derivative Dataset	Delivery Format	Delivery expected
0.5m Digital Elevation Model (DEM)	Cloud Optimized GeoTiff (COGTIFF)	November 2024, was tested for 1 LAB, additional LABs to be determined
Other resolution DEMs	Cloud Optimized GeoTiff (COGTIFF)	TBD
Contours	Vector	TBD
Hillshade	Cloud Optimized GeoTiff (COGTIFF)	TBD
Hydrographic Position Index (HPI)	Cloud Optimized GeoTiff (COGTIFF)	TBD
Digital Surface Model (DSM)	Cloud Optimized GeoTiff (COGTIFF)	TBD
Normalized Digital Surface Model (nDSM)	Cloud Optimized GeoTiff (COGTIFF)	TBD
Hydro Breaklines	Vector	TBD
Lidar Point Cloud Tiles		TBD (also available on USGS TNM)

Update on MnGeo PLSS Monument Grant

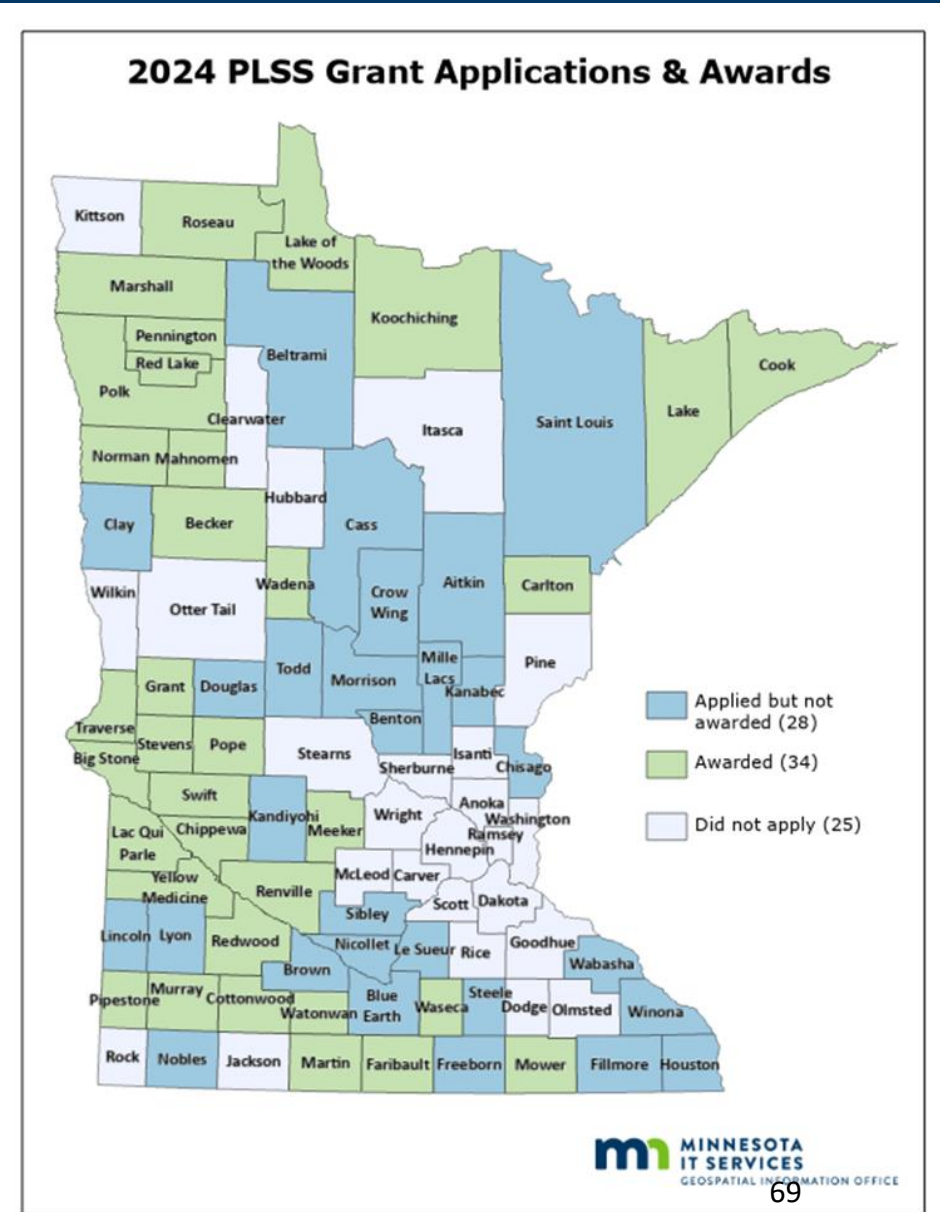
- **November quarterly progress reports show:**

- Only one county has **not** started project work
- Average project completion is 25%
As reported by the counties
- Processed **\$1,947,542.98** in reimbursements
21% of \$9.1 million
- A few counties are on track to finish early
- 1 county has not completed their progress report to date

- **Upcoming progress:**

- Fieldwork will likely slow down during the winter months
- Office work will pick up/ catch up during the winter months
- Kory Thurnau, MnGeo Survey Coordinator will meet with each grantee starting in January for annual monitoring and reconciliation.
- Kory hopes to get out on more site visits as well

- **PLSS Point Data Standard has been submitted to GAC Standards Committee**



PLSS Remonumentation Legislation Subcommittee

- **Past outreach**
 - MMATC event was held at 2024 GIS/LIS
 - Pat Veraguth did a podcast about [County Surveyors](#)
- **Upcoming outreach**
 - December 9: AMC Annual Conference presentation by Pat Veraguth and Kory Thurnau
 - National Association of County Surveyor's (NACS) have requested Kory to present at their annual meeting in March
 - Plans taking shape for Surveyor's Week (March 16-22, 2025) Capitol Event TBA
- **Legislative update**
 - Tribal governments included in proposed new legislation
 - Draft legislation has been submitted to revisors office



GIS Day Recognition and Round Robin Wakefield / Brandt / All



GIS Day - A Geospatial Approach to Equity and Inclusion

- **Mix of presentations and attendance options**

- Thursday, November 21st in Saint Paul
- Welcome by Ashley Oolman, [4 presentations](#) and afternoon panel discussion moderated by GIO
 - **MPCA** – Environmental Justice Areas
 - **Health** - Access to Early hearing detection screening access
 - **Children, Youth and Families** – targeting funds childcare stabilization funding
 - **Transportation** – assessing investment in the **Safe Routes to Schools** program

- **Broad reach– 157 total**

- **63** in person, 94 online
- **40** State entities (agencies, departments, divisions) represented, others a mix of city, county, private and non-profit
- **54** GIS professional, **21** Data Analyst, **21** IT professionals, **15** Program/Project lead, **8** equity practitioners and **34** “other” representing students to CBTO’s, Landscape Architect to Epidemiologist

- **Impact**

- Curated [Resource list](#)
- GIS Included in state “Equity Toolkit”
- Positive reviews – all said they were “likely” or “somewhat likely” to use information in their work



Round Robin / Announcements All



Reminder: Next Meeting

Wednesday, March 5, 2025

10:00 a.m. - 12:00 p.m.

Online via Teams

Agenda Item 12

Adjourn
Albrecht



Thank You!

Minnesota Geospatial Advisory Council

gisinfo.mngeo@state.mn.us

651-201-2499