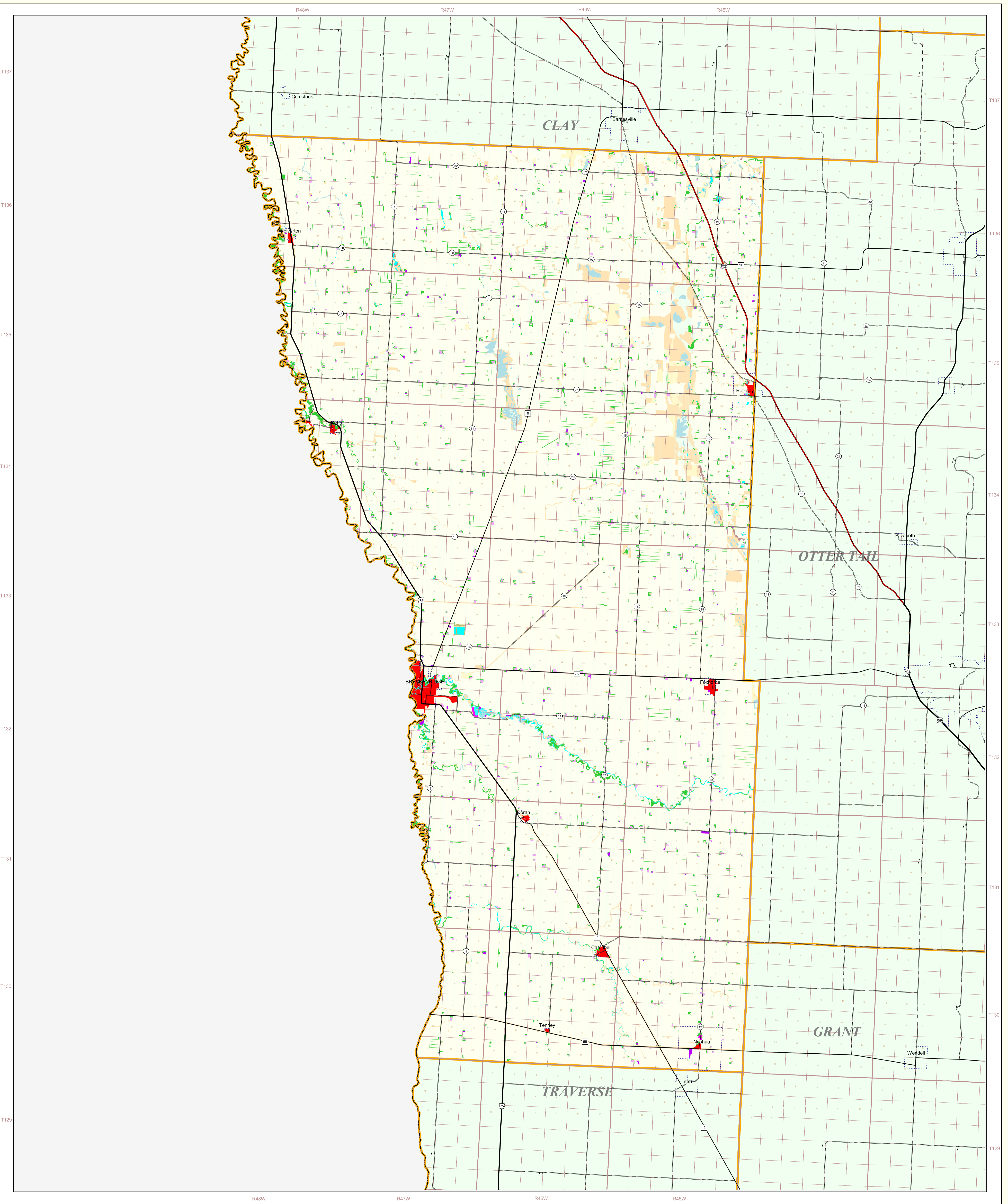


Wilkin County Land Use and Cover

State of Minnesota
1988 - 1990



MAP FEATURES

Land Use

- Urban and Industrial
- Farmsteads and Rural Residences
- Rural Residential Development Complexes
- Other Rural Developments
- Cultivated Land
- Transitional Agricultural Land
- Grassland
- Grassland-Shrub-Tree Complex (Deciduous)
- Grassland-Shrub-Tree Complex (Coniferous)
- Deciduous Forest
- Coniferous Forest
- Water
- Wetlands
- Gravel Pits and Open Mines
- Bare Rock
- Exposed Soil, Sandbars, and Sand Dunes
- Unclassified/Unlabeled/Outside State or County

Cities

- COUNTY SEAT
- Other Cities

Highways

- Interstate Highway
- U.S. Trunk Highway
- State Trunk Highway
- County State-Aid Highway (CSAH)

Public Land Survey

- State Boundary
- County Boundary
- Township & Range Section
- T34 Township
- R25W Range & Direction

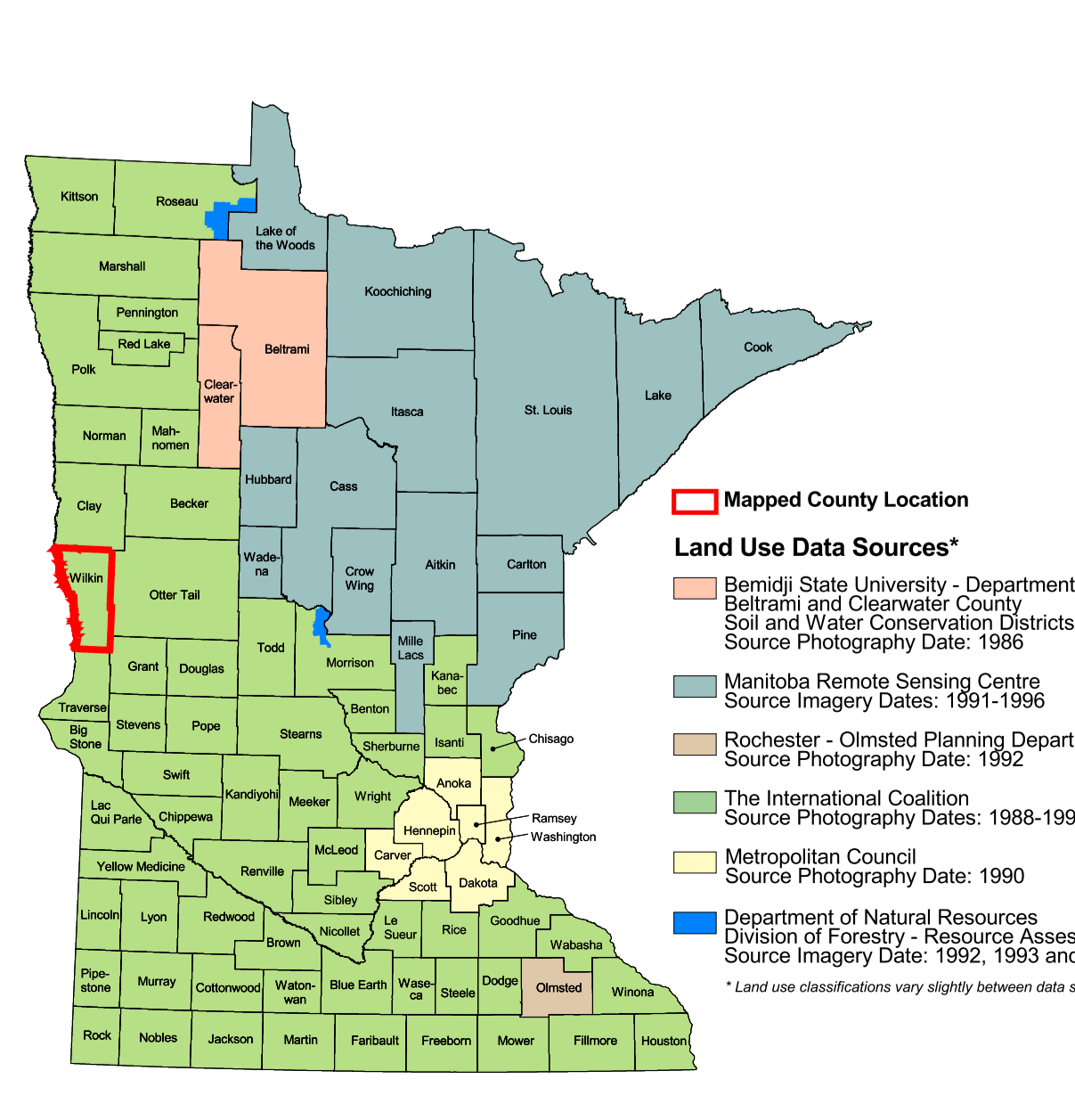
Data Sources

- The International Coaction
- Produced by the Minnesota Land Management Information Center (LMIC) in 1996
- Source Photography Dates: 1988-1990
- Minnesota Center for Geographic Information Systems (MCGIS), U.S. Geological Survey, 1:250,000 scale, 1988-1990
- U.S. Bureau of the Census, 1990
- Minnesota Department of Transportation, 1987-88

Wilkin County Land Use Statistics

Source: The Land Management Information Center (LMIC)

DESCRIPTION	ACRES	% ACRES
Urban and Industrial	1,841	0.4
Farmsteads and Rural Residences	2,018	0.4
Rural Residential Development Complexes	29	<0.1
Other Rural Developments	29	<0.1
Cultivated Land	456,967	81.5
Transitional Agricultural Land	1,052	0.2
Grassland	1,000	0.2
Grassland-Shrub-Tree Complex (Deciduous)	2,063	0.4
Grassland-Shrub-Tree Complex (Coniferous)	808	0.1
Deciduous Forest	302	0.1
Coniferous Forest	302	0.1
Water	1,324	0.2
Wetlands	4,516	0.8
Gravel Pits and Open Mines	11	<0.1
Bare Rock	23	<0.1
Exposed Soil, Sandbars, and Sand Dunes	132	<0.1
Unclassified/Unlabeled/Outside State or County	13,293	2.4
TOTAL	15,229	100%



ABOUT THIS MAP

Land Use Data Sources*

- Bentley State University - Department of Geography
- Bentley and Clearwater County Soil and Water Conservation Districts
- Source Imagery Dates: 1991-1995
- Minnesota Remote Sensing Center
- Source Imagery Dates: 1991-1995
- Rochester - Olmsted Planning Department
- Source Imagery Dates: 1992
- The International Coaction
- Source Photography Dates: 1988-1990
- Minnesota Council
- Source Imagery Dates: 1990
- Department of Natural Resources
- Division of Forestry - Resource Assessment
- Source Imagery Dates: 1992, 1993 and 1996

*Land use classifications vary slightly between data sources.

Data Sources: The land use / land cover categories displayed on this map were derived from sources that included the U.S. Department of Agriculture, Agricultural Stabilization and Conservation Service's (ASCS) low altitude, section-centered, 30mm color aerial photography taken during 1988-1990 and U.S. Fish and Wildlife Service National Wetlands Inventory (NWI) 1:250,000-scale field maps. Land use / land cover data were digitized from these sources to create county coverages.

Data Interpretation and Computerization: The project was coordinated by The International Coaction for Land and Water Stewardship in the Red River Basin. Land use / land cover interpretation was performed by DPA International. The smallest area interpreted was approximately 2.5 acres.

Land use / land cover information was transcribed on to stable-base mylar registered to U.S. Geological Survey 1:250,000-scale topographic maps and then digitized by DPA International or Alexandria Technical College staff. Minnesota Department of Natural Resources MIS Bureau staff then joined the digitized files together to create county coverages.

Online documentation: <http://lucy.lmci.state.mn.us/metadata/use89.html>

Data collection and interpretation supported by the Minnesota Future Resources Fund as recommended by the Legislative Commission on Minnesota Resources (LCMR).

The following groups also participated over an extended period:

- DPA International
- The International Coaction
- Minnesota Board of Water and Soil Resources
- Minnesota Department of Natural Resources
- Minnesota Land Management Information Center
- The Red River Management Board
- North Dakota State University - Agricultural Engineering Department
- University of Minnesota - Department of Forest Resources
- University of North Dakota - Geography Department
- Widseth, Smith and Nelling

Map Projection: UTM, Extended Zone 15
Scale: NAD83

Liability Statement
The Land Management Information Center (LMIC) does not warrant the results you may obtain by using this map. This map is provided "as is" without express or implied warranties, including warranties of merchantability and fitness. In no event will LMIC be liable for any consequential, incidental or special damages, including any lost profits or lost savings, even if a LMIC representative has been advised of the possibility of such damages or any other claim by any third party.

Distribution Information
This map was prepared in April, 1996. Both the map and the data used to create it are available from the Land Management Information Center at Minnesota Planning.

You may also view a generalized, interactive land use map of Minnesota, along with detailed information about land use data at:
<http://mapserver.lmci.state.mn.us/landuse>

For further assistance, or to order copies of this map, contact:
Land Management Information Center
608 Cedar Street
Centennial Building, Room 330
St. Paul, MN 55101
Phone: (651) 296-1211
Fax: (651) 296-1212
E-Mail: ceer@mgis.com