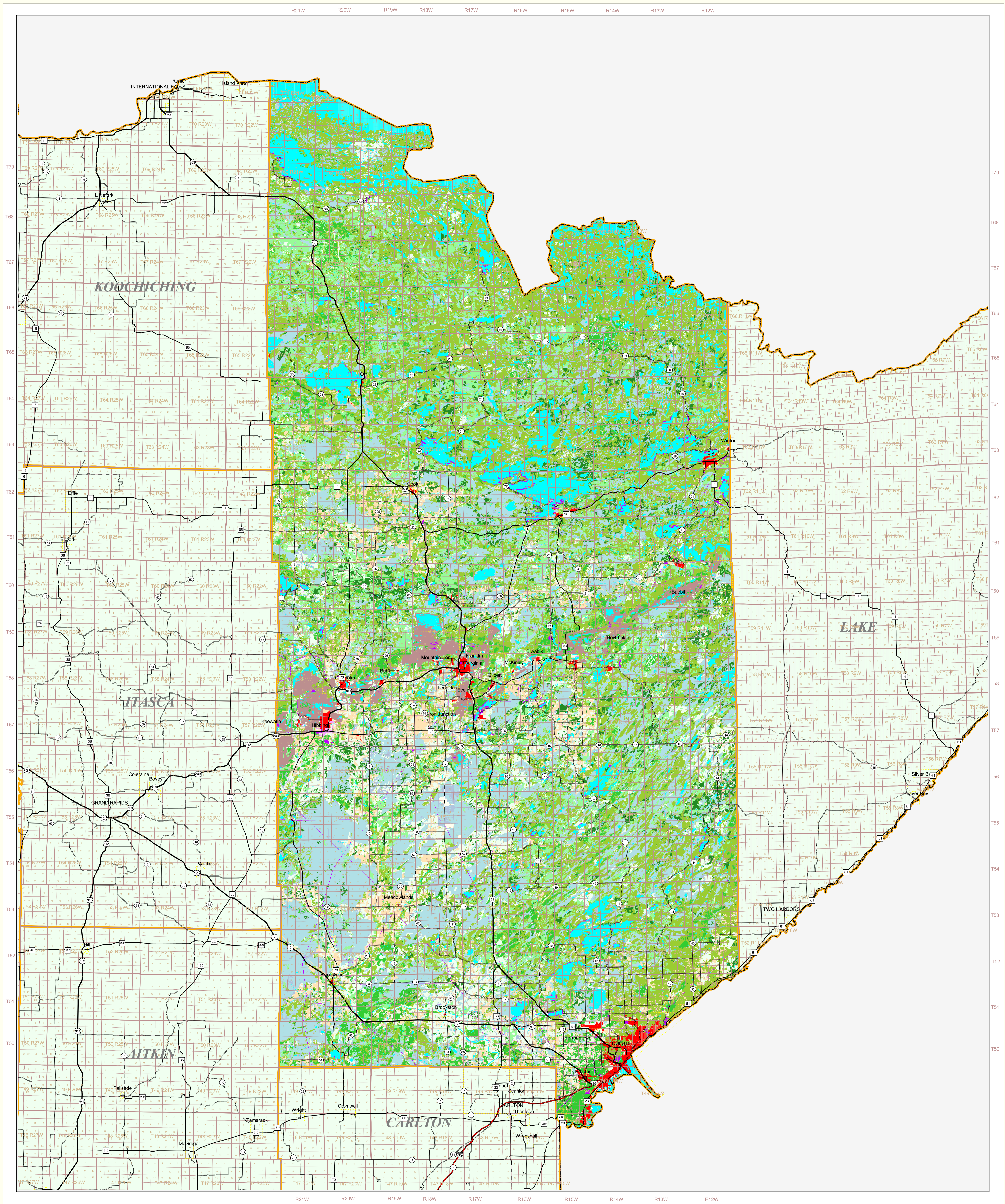


# St Louis County Land Use and Cover

State of Minnesota

June 8, 1994



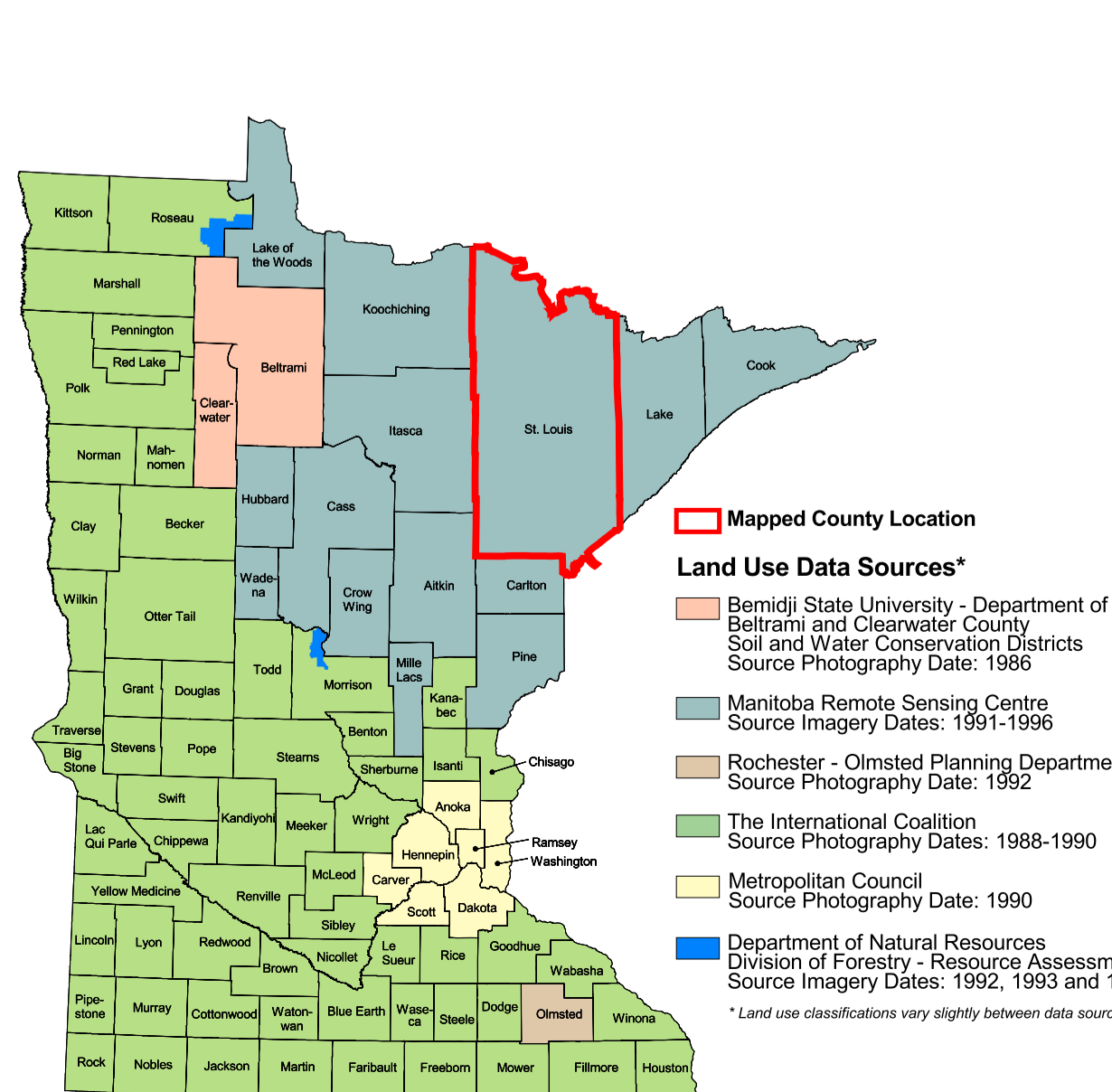
### MAP FEATURES

- Land Use**
  - Urban/Industrial
  - Farmsteads and Rural Residences
  - Other Rural Developments
  - Cultivated Land
  - Grassland
  - Shrubby Grassland
  - Regeneration/Young Forest
  - Mixed Forest
  - Deciduous Forest
  - Coniferous Forest
  - Wetlands: Bogs
  - Wetlands: Marsh and Fens
  - Water
  - Gravel Pits and Open Mines
  - Bare Rock
- Cities**
  - COUNTY SEAT
  - Other Cities
- Highways**
  - Interstate Highway
  - U.S. Trunk Highway
  - State Trunk Highway
  - County State-Aid Highway (CSAH)
- Public Land Survey**
  - State Boundary
  - County Boundary
  - Township & Range
  - Section
- Data Sources**
  - T34 Township
  - R25W Range & Direction

### St Louis County Land Use Statistics

Source: The Land Management Information Center (LMIC)

DESCRIPTION	ACRES	% ACRES
Urban/Industrial	2895.8	0.7
Farmsteads and Rural Residences	6157.8	0.1
Other Rural Developments	22518.3	0.5
Cultivated Land	2485.9	<0.1
Grassland	225586.8	5.2
Shrubby Grassland	387329.4	9
Regeneration/Young Forest	291300.7	7.1
Mixed Forest	1415206	32.8
Deciduous Forest	203676.5	4.7
Coniferous Forest	203591.3	4.7
Wetlands: Bogs	834247.7	19.4
Wetlands: Marsh and Fens	137854.4	3.2
Water	373282.1	8.7
Gravel Pits and Open Mines	77329.2	1.8
Bare Rock	1594.1	<0.1
<b>TOTAL</b>	<b>4,311,013</b>	<b>100%</b>



### ABOUT THIS MAP

**Land Use Data Sources\***

- Benji State University - Department of Geography
- Benji State University - County Soil and Water Conservation Districts
- Source Imagery Date: 1995
- Manitoba Remote Sensing Centre
- Source Imagery Date: 1991-1996
- Rochester - Olmsted Planning Department
- Source Imagery Date: 1992
- The International Geostationary Satellite
- Source Imagery Dates: 1988-1990
- Metropolitan Council
- Source Imagery Date: 1990
- Department of Natural Resources
- Division of Forestry - Resource Assessment
- Source Imagery Dates: 1992, 1993 and 1996

\*Land use classifications vary slightly between data sources.

**Map Projection:** UTM, Extended Zone 15  
**Datum:** NAD83

**Scale:** 0 to 20 Kilometers / 0 to 18 Miles

**Liability statement**  
The Land Management Information Center (LMIC) does not warrant the results you may obtain by using this map. This map is provided as is without express or implied warranties, including warranties of merchantability and fitness. In no event will LMIC be liable for any consequential, incidental or special damages, including any lost profits or lost savings, even if a LMIC representative has been advised of the possibility of such damages or any other claim by any third party.

**Distribution Information**  
This map was prepared in April, 1999. Both the map and the data used to create it are available from the Land Management Information Center at Minnesota Planning.

**For further assistance, or to order copies of this map, contact:**  
Land Management Information Center  
658 Cedar Street  
Centennial Building, Room 330  
St. Paul, MN 55155  
Phone: (651) 296-1211  
FAX: (651) 296-1213  
E-Mail: clearinghouse@mnplanning.state.mn.us

### Credits and Acknowledgements

Data collection and interpretation supported by the Minnesota Future Resources Fund as recommended by the Legislative Commission on Minnesota Resources (LCMR).

The following groups also participated over an extended period:

- Linnet Geosystems, Winnipeg
- The Manitoba Remote Sensing Centre, Winnipeg
- Minnesota Department of Natural Resources
- University of Minnesota - Department of Forest Resources
- Widshelm, Smith and Nolting

**Map Projection:** UTM, Extended Zone 15  
**Datum:** NAD83

**Liability statement**  
The Land Management Information Center (LMIC) does not warrant the results you may obtain by using this map. This map is provided as is without express or implied warranties, including warranties of merchantability and fitness. In no event will LMIC be liable for any consequential, incidental or special damages, including any lost profits or lost savings, even if a LMIC representative has been advised of the possibility of such damages or any other claim by any third party.

**Distribution Information**  
This map was prepared in April, 1999. Both the map and the data used to create it are available from the Land Management Information Center at Minnesota Planning.

**For further assistance, or to order copies of this map, contact:**  
Land Management Information Center  
658 Cedar Street  
Centennial Building, Room 330  
St. Paul, MN 55155  
Phone: (651) 296-1211  
FAX: (651) 296-1213  
E-Mail: clearinghouse@mnplanning.state.mn.us