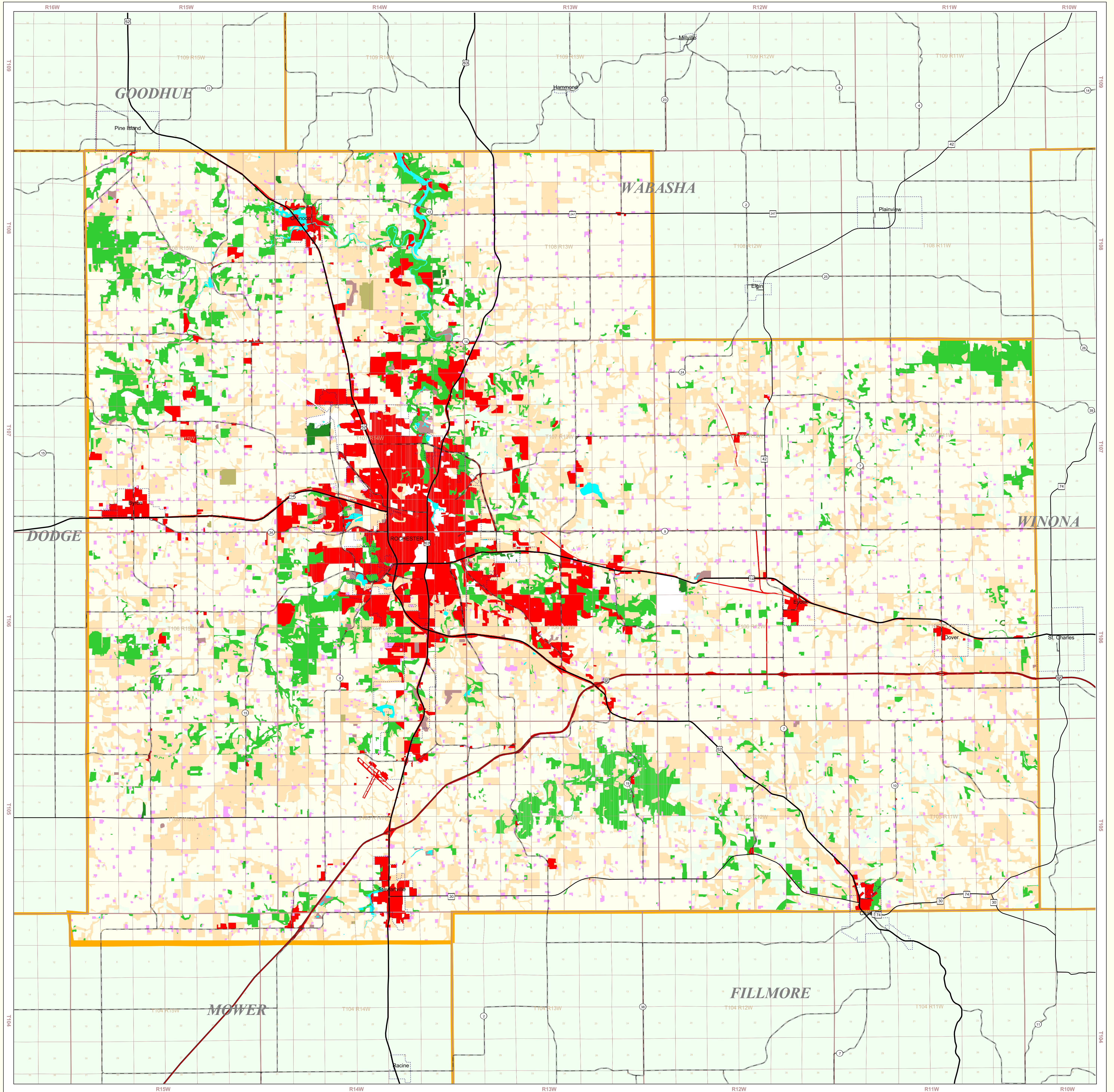


Olmsted County Land Use and Cover

State of Minnesota

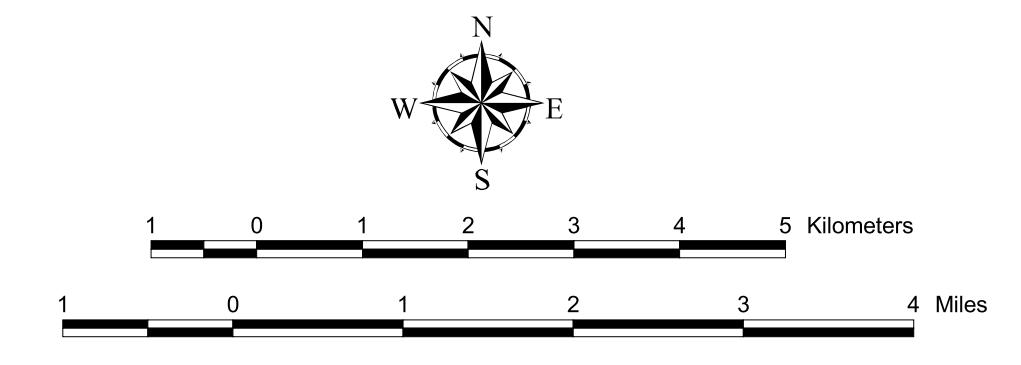
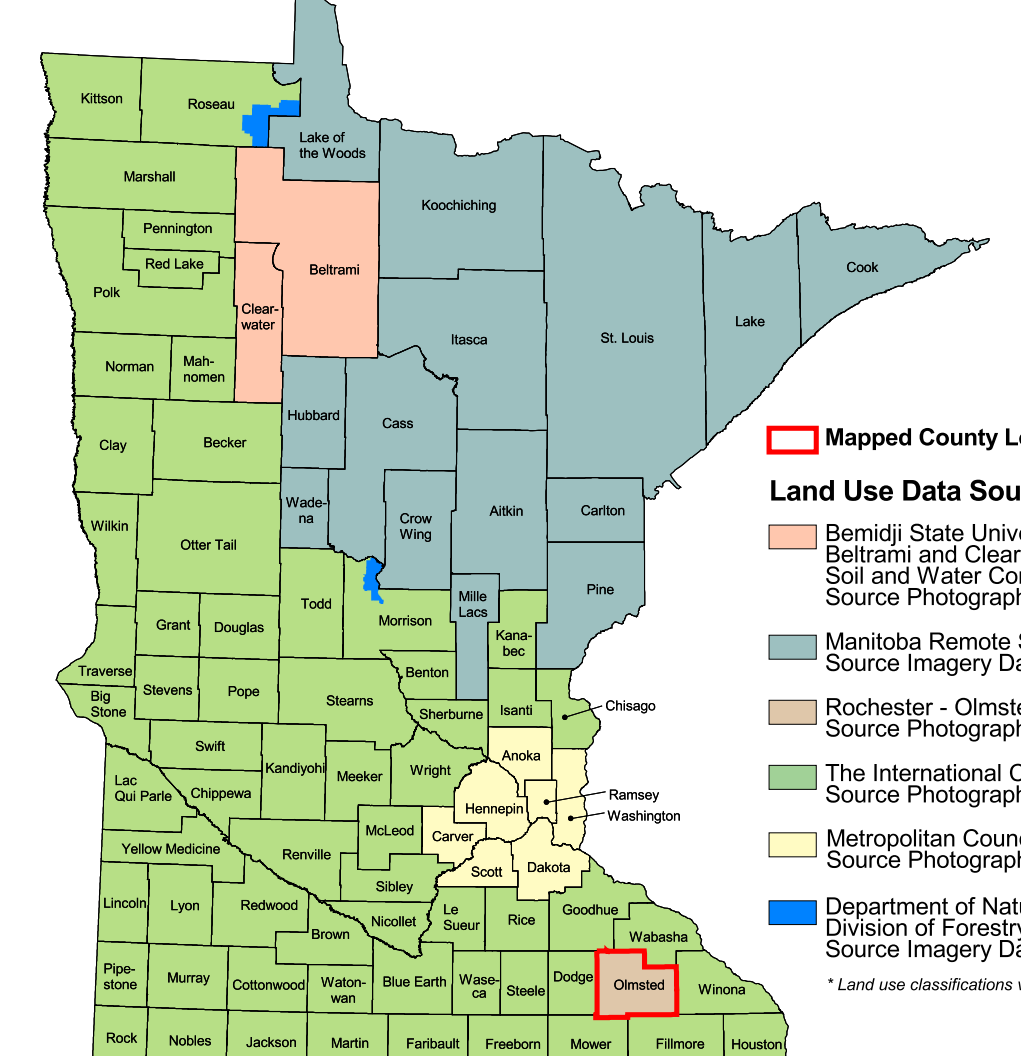
1992



- MAP FEATURES**
- Land Use****
- Urban and Industrial
 - Farmsteads and Rural Residences
 - Rural Residential Development Complexes
 - Other Rural Developments
 - Cultivated Land
 - Transitional Agricultural Land
 - Grassland
 - Grassland-Shrub-Tree Complex (Deciduous)
 - Grassland-Shrub-Tree Complex (Coniferous)
 - Deciduous Forest
 - Coniferous Forest
 - Water
 - Wetlands
 - Gravel Pits and Open Mines
 - Bare Rock
 - Exposed Soil, Sandbars, and Sand Dunes
 - Unclassified/Unlabeled/Outside State or County
- Cities***
- COUNTY SEAT
 - Other Cities
- Highways***
- Interstate Highway
 - U.S. Trunk Highway
 - State Highway
 - County State-Aid Highway (CSAH)
- Public Land Survey***
- State Boundary
 - County Boundary
 - Township and Range Section
- T34 Township
R225W Range & Direction

Olmsted County Land Use Statistics
Source: The Land Management Information Center (LMIC)

CODE	DESCRIPTION	ACRES	% ACRES
0	Unlabeled	0	0.0
11	Urban and Industrial	3,949	0.9
12	Farmsteads and Rural Residences	33,821	8.1
13	Rural Residential Development Complexes	0	0.0
14	Other Rural Developments	0	0.0
21	Cultivated Land	235,299	56.2
23	Transitional Agricultural Land	456	0.1
31	Grassland	90,676	21.7
32	Grassland-Shrub-Tree Complex (Deciduous)	15,565	3.7
33	Grassland-Shrub-Tree Complex (Coniferous)	0	0.0
41	Deciduous Forest	31,535	7.5
42	Coniferous Forest	632	0.2
43	Mixed Wood Forest	0	0.0
50	Water	1,504	0.4
61	Wetlands	3	< 0.1
71	Gravel Pits and Open Mines	1,050	0.3
72	Bare Rock	0	0.0
73	Exposed Soil	434	0.1
80	Unclassified	3,534	0.8
99	Outside State or Outside County	0	0.0
TOTAL		418,413	100%



ABOUT THIS MAP

Data Sources: The land use / land cover categories displayed on this map were derived from sources that included the U. S. Department of Agriculture, Agricultural Stabilization and Conservation Service's (ASCS) low altitude, section-centered, 35mm color aerial photography (approximately 1:1,000) taken during the spring of 1992. Other sources used included 1981 land use data developed for the county by the Minnesota Land Management Information Center and updated yearly since 1987 by the county.

Data Interpretation and Computerization: Olmsted County Planning Department staff projected the slides images on a wall and compared them with paper maps of the last updated version of land use / land cover. Changes were manually drawn on the reference maps and later digitized.

The interpretations were made based on a classification system that yielded very detailed information about rural areas, particularly agricultural land uses. The Olmsted County Planning Department generalized the detailed classification scheme to a less-detailed one used in surrounding counties as well as on this map.

On-line documentation: In progress.

Credits and Acknowledgements

Land use data provided by:
Rochester - Olmsted Planning Department

Map Projection: UTM, Extended Zone 15
Datum: NAD83

Liability Statement

The Land Management Information Center (LMIC) does not warrant the results you may obtain by using this map. This map is provided as is, without express or implied warranties, including warranties of merchantability and fitness. In no event will LMIC be liable for any consequential, incidental or special damages, including any lost profits or lost savings, even if a LMIC representative has been advised of the possibility of such damages or any other claim by any third party.

Distribution Information


This map was prepared in April, 1999. Both the map and the data used to create it are available from the Land Management Information Center at Minnesota Planning.

You may also view a generalized, interactive land use map of Minnesota, along with detailed information about land use data at:
<http://mapserver.lmic.state.mn.us/landuse>

For further assistance, or to order copies of this map, contact:

Land Management Information Center
658 Cedar Street
Centennial Building, Room 330
St. Paul, MN 55155

Phone: (651) 296-1211
FAX: (651) 296-1212
E-Mail: clearinghouse@mplanning.state.mn.us



1. Rochester - Olmsted Planning Department Source: Photography Date: 1992
2. U.S. Bureau of the Census, TOIGS dataset, 1995.
3. Minnesota Department of Transportation, 1997-98.
4. Produced by the Minnesota Land Management Information Center from U.S. Geological Survey GISDS, 1:100,000 scale, 30x30 quadrangle maps published between 1977 and 1998.