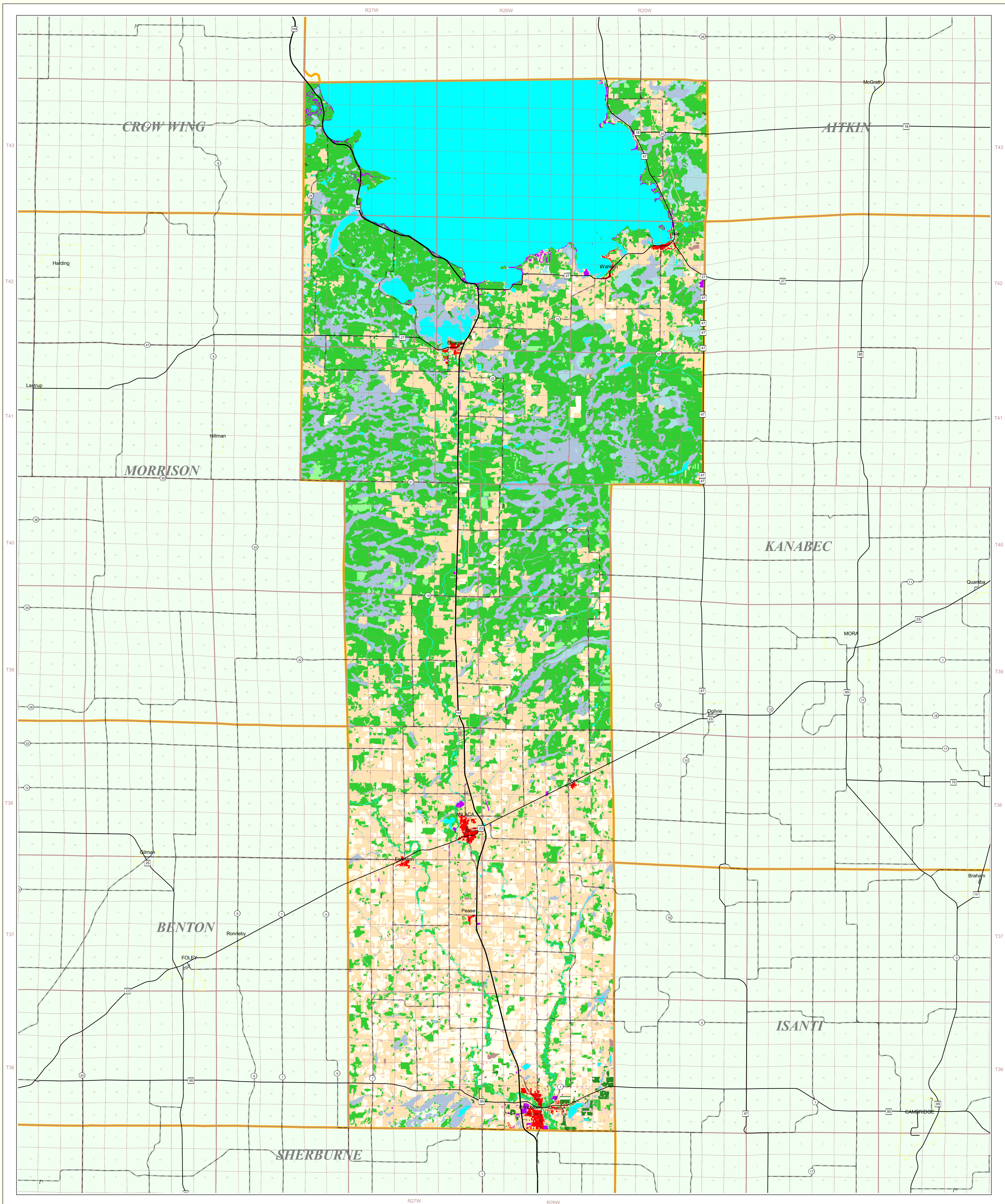


Mille Lacs County Land Use and Cover

State of Minnesota
September 20, 1991



MAP FEATURES

Land Use

- Urban/Industrial
- Farmsteads and Rural Residences
- Other Rural Developments
- Cultivated Land
- Grassland
- Shrubby Grassland
- Regeneration/Young Forest
- Deciduous Forest
- Coniferous Forest
- Wetlands: Bogs
- Wetlands: Marsh and Fens
- Water
- Gravel Pits and Open Mines
- Bare Rock

Cities

- COUNTY SEAT
- Other Cities
- Municipal Boundary

Highways

- Interstate Highway
- U.S. Trunk Highway
- State Highway
- County State-Aid Highway (CSAH)

Public Land Survey

- State Boundary
- County Boundary
- Township & Range
- Section

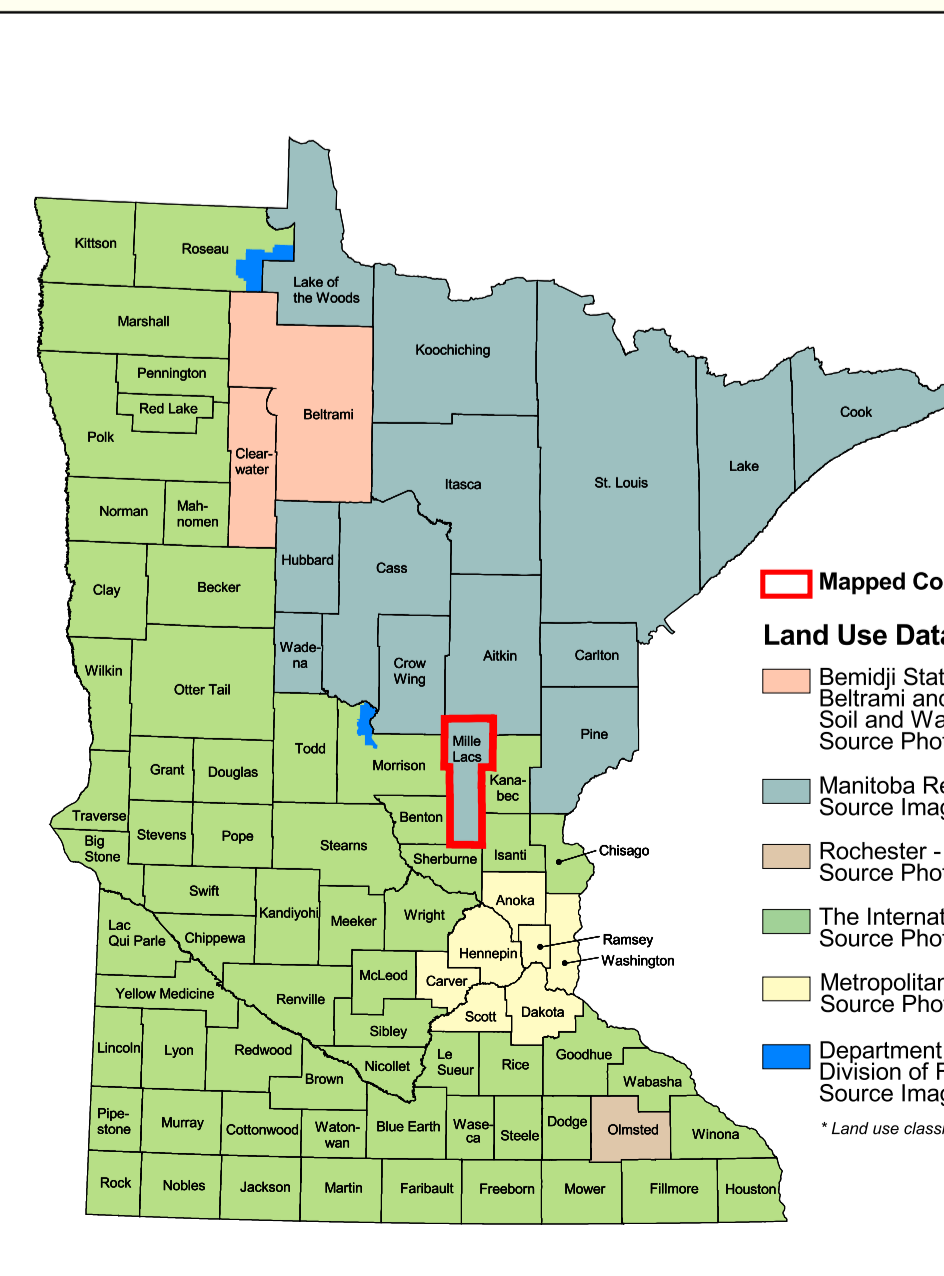
Data Sources

- Minnesota Remote Sensing Center
- Minnesota Department of Natural Resources
- U.S. Bureau of the Census
- Minnesota Department of Transportation

Mille Lacs County Land Use Statistics

Source: The Land Management Information Center (LMIC)

DESCRIPTION	ACRES	% ACRES
Urban/Industrial	1579.9	0.4
Farmsteads and Rural Residences	2345.7	0.5
Other Rural Developments	1488.9	0.3
Cultivated Land	42152	9.2
Grassland	121751.9	27.8
Shrubby Grassland	806.8	0.2
Regeneration/Young Forest	2998.3	0.6
Mixed Forest	185.3	<0.1
Deciduous Forest	13339.8	30.1
Coniferous Forest	8993.8	2.1
Wetlands: Bogs	43029.8	10.8
Wetlands: Marsh and Fens	70938.5	16.3
Water	486.2	0.1
Gravel Pits and Open Mines	0	0
Bare Rock	0	0
TOTAL	435,722	100%



Land Use Data Sources

- Minnesota State University - Department of Geography
- Minnesota Remote Sensing Center
- Minnesota Department of Natural Resources
- Rochester - Olmsted Planning Department
- The International Coalition
- Metropolitan Council
- Department of Natural Resources

ABOUT THIS MAP

This map was prepared in April, 1991. Both the map and the data used to create it are available from the Land Management Information Center at Minnesota Planning.

Liability Statement

The Land Management Information Center (LMIC) does not warrant the results you may obtain by using this map. This map is provided as a reference only and is not intended to be used for any purpose other than that for which it was prepared. The LMIC representative has been advised of the possibility of such damages or any other claim by any third party classification for Lake County.

Distribution Information

You may also view a generalized, interactive land use map of Minnesota, along with detailed information about land use data at:

<http://mapserver.lmic.state.mn.us/landuse>

For further assistance, or to order copies of this map, contact:

Land Management Information Center
508 Cedar Street
Central Building, Room 330
St. Paul, MN 55155

Phone: (651) 296-1211
FAX: (651) 296-1212
E-Mail: clearinghouse@mnplanning.state.mn.us

Credits and Acknowledgements

Data collection and interpretation supported by the Minnesota Future Resources Fund as recommended by the Legislative Commission on Minnesota Resources (LCMR).

The following groups also participated over an extended period:

- Linnet Geosystems, Winthrop
- The Minnesota Remote Sensing Center, Winthrop
- Minnesota Department of Natural Resources
- University of Minnesota - Department of Forest Resources
- Widshelm, Smith and Nolting

Map Projection: UTM, Extended Zone 15
Datum: NAD83

Liability Statement

The Land Management Information Center (LMIC) does not warrant the results you may obtain by using this map. This map is provided as a reference only and is not intended to be used for any purpose other than that for which it was prepared. The LMIC representative has been advised of the possibility of such damages or any other claim by any third party classification for Lake County.

Distribution Information

You may also view a generalized, interactive land use map of Minnesota, along with detailed information about land use data at:

<http://mapserver.lmic.state.mn.us/landuse>

For further assistance, or to order copies of this map, contact:

Land Management Information Center
508 Cedar Street
Central Building, Room 330
St. Paul, MN 55155

Phone: (651) 296-1211
FAX: (651) 296-1212
E-Mail: clearinghouse@mnplanning.state.mn.us