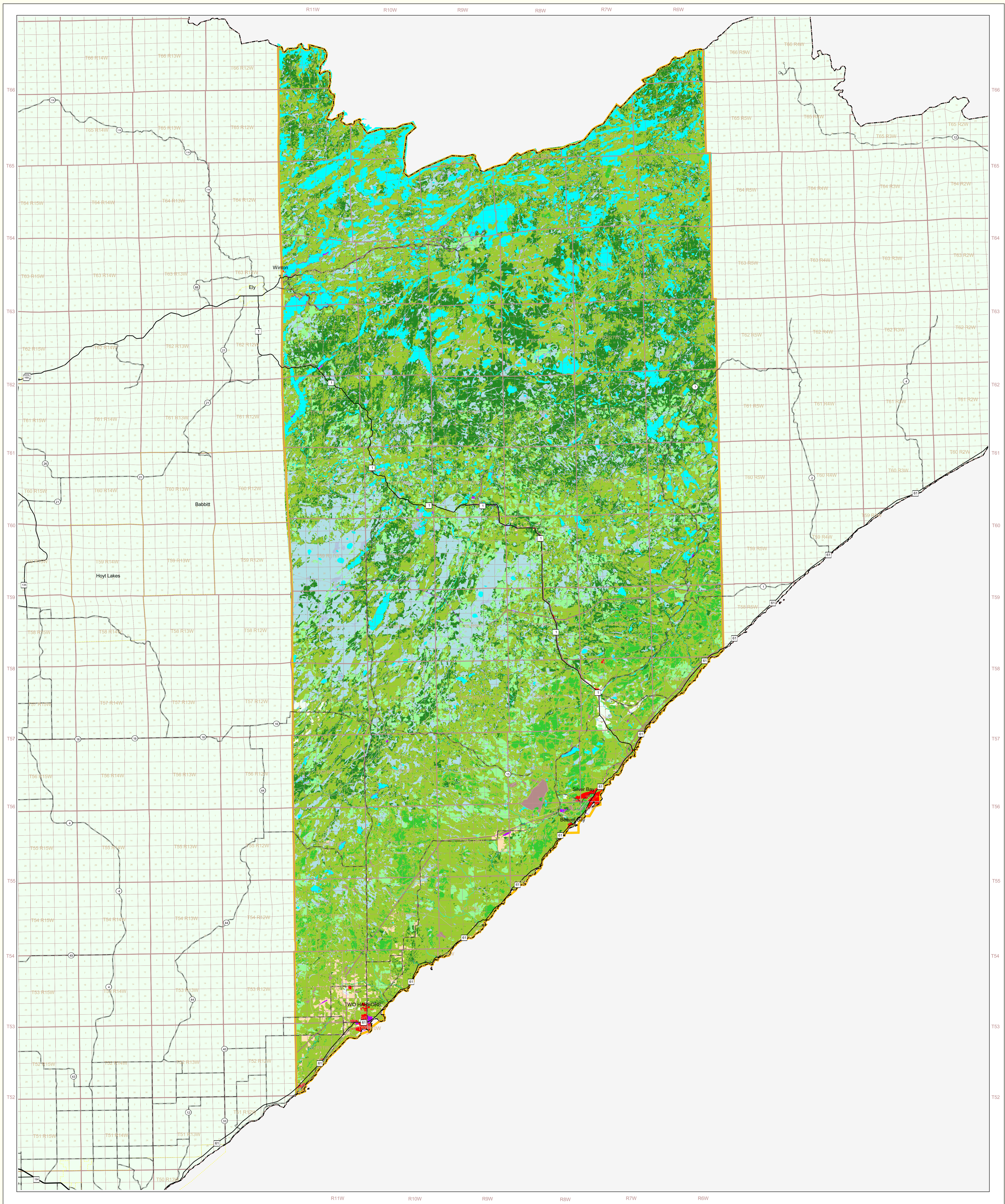


# Lake County Land Use and Cover

State of Minnesota

June 1, 1994



### MAP FEATURES

**Land Use**

- Urban/Industrial
- Farmsteads and Rural Residences
- Other Rural Developments
- Cultivated Land
- Grassland
- Shrubby Grassland
- Regeneration/Young Forest
- Mixed Forest
- Deciduous Forest
- Coniferous Forest
- Wetlands: Bogs
- Wetlands: Marsh and Fens
- Water
- Gravel Pits and Open Mines
- Bare Rock

**Cities**

- COUNTY SEAT
- Other Cities

**Highways**

- Interstate Highway
- U.S. Trunk Highway
- State Trunk Highway
- County State-Aid Highway (CSAH)

**Public Land Survey**

- State Boundary
- County Boundary
- Township & Range
- Section
- T34 Township
- R25W Range & Direction

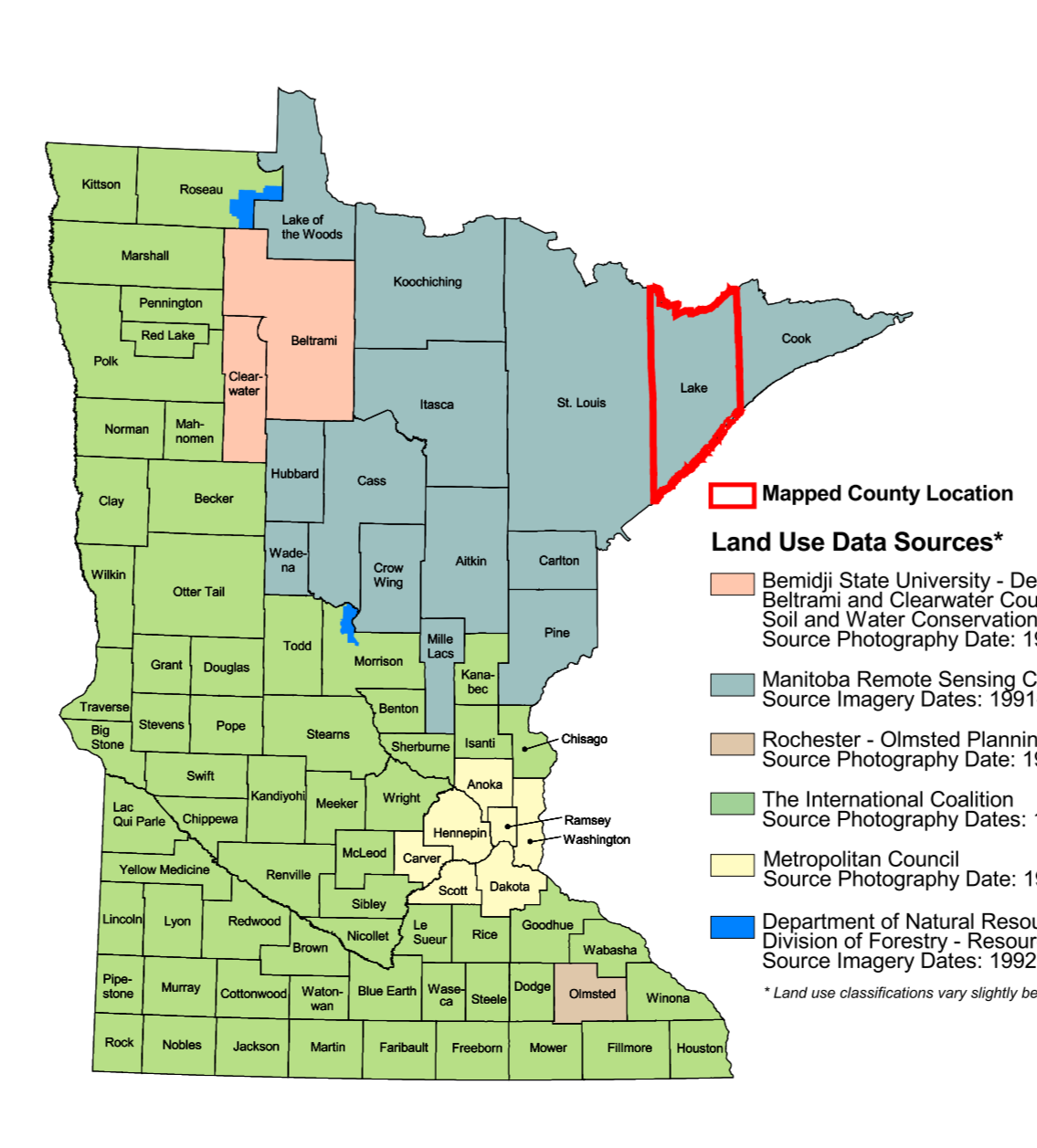
**Data Sources**

1. Manitoba Remote Sensing Centre, Source Imagery Dates: 1991-1996  
 2. Minnesota Department of Natural Resources, Source Imagery Dates: 1992, 1993 and 1996  
 3. U.S. Bureau of the Census, 1996  
 4. Minnesota Department of Transportation, 1997-98

### Lake County Land Use Statistics

Source: The Land Management Information Center (LMIC)

DESCRIPTION	ACRES	% ACRES
Urban/Industrial	2362.5	<0.2
Farmsteads and Rural Residences	808.6	<0.1
Other Rural Developments	2703.4	0.2
Cultivated Land	0	0
Grassland	7503.3	0.5
Shrubby Grassland	3351.3	0.2
Regeneration/Young Forest	99774.6	6.8
Mixed Forest	655680.5	44.5
Deciduous Forest	48490.8	3.3
Coniferous Forest	259074.4	19.7
Wetlands: Bogs	161503.2	11.0
Wetlands: Marsh and Fens	46904.4	3.2
Water	134327.7	9.1
Gravel Pits and Open Mines	3259.4	0.2
Bare Rock	16525.9	1.1
<b>TOTAL</b>	<b>1,473,620</b>	<b>100.0</b>



### ABOUT THIS MAP

**Land Use Data Sources\***

- Manitoba Remote Sensing Centre, Source Imagery Dates: 1991-1996
- Northstar - Onsted Planning Department, Source Imagery Dates: 1992
- The International Geosphere, Source Imagery Dates: 1988-1990
- Metropolitan Council, Source Imagery Dates: 1990
- Department of Natural Resources, Division of Forestry - Resource Assessment, Source Imagery Dates: 1992, 1993 and 1996

\*Land use classifications vary slightly between data sources.

**Map Projection:** UTM, Extended Zone 15  
**Datum:** NAD83

**Liability Statement**

The Land Management Information Center (LMIC) does not warrant the results you may obtain by using this map. This map is provided as is without express or implied warranties, including warranties of merchantability and fitness. In no event will LMIC be liable for any consequential, incidental or special damages, including any lost profits or lost savings, even if a LMIC representative has been advised of the possibility of such damages or any other claim by any third party.

**Distribution Information**

This map was prepared in April, 1999. Both the map and the data used to create it are available from the Land Management Information Center at Minnesota Planning.

You may also view a generalized, interactive land use map of Minnesota, along with detailed information about land use data at:  
<http://mapserver.lmic.state.mn.us/landuse>

**For further assistance, or to order copies of this map, contact:**  
 Land Management Information Center  
 608 Cedar Street  
 Centennial Building, Room 330  
 St. Paul, MN 55155  
 Phone: (651) 296-1211  
 FAX: (651) 296-1212  
 E-Mail: clearinghouse@mnplanning.state.mn.us

### Credits and Acknowledgements

Data collection and interpretation supported by the Minnesota Future Resources Fund as recommended by the Legislative Commission on Minnesota Resources (LCMR).

The following groups also participated over an extended period:

- Linnet Geosystems, Winipeg
- The Manitoba Remote Sensing Centre, Winnipeg
- Minnesota Department of Natural Resources
- University of Minnesota - Department of Forest Resources
- Widshelm, Smith and Nollig

**Map Projection:** UTM, Extended Zone 15  
**Datum:** NAD83

**Liability Statement**

The Land Management Information Center (LMIC) does not warrant the results you may obtain by using this map. This map is provided as is without express or implied warranties, including warranties of merchantability and fitness. In no event will LMIC be liable for any consequential, incidental or special damages, including any lost profits or lost savings, even if a LMIC representative has been advised of the possibility of such damages or any other claim by any third party.

**Distribution Information**

This map was prepared in April, 1999. Both the map and the data used to create it are available from the Land Management Information Center at Minnesota Planning.

You may also view a generalized, interactive land use map of Minnesota, along with detailed information about land use data at:  
<http://mapserver.lmic.state.mn.us/landuse>

**For further assistance, or to order copies of this map, contact:**  
 Land Management Information Center  
 608 Cedar Street  
 Centennial Building, Room 330  
 St. Paul, MN 55155  
 Phone: (651) 296-1211  
 FAX: (651) 296-1212  
 E-Mail: clearinghouse@mnplanning.state.mn.us