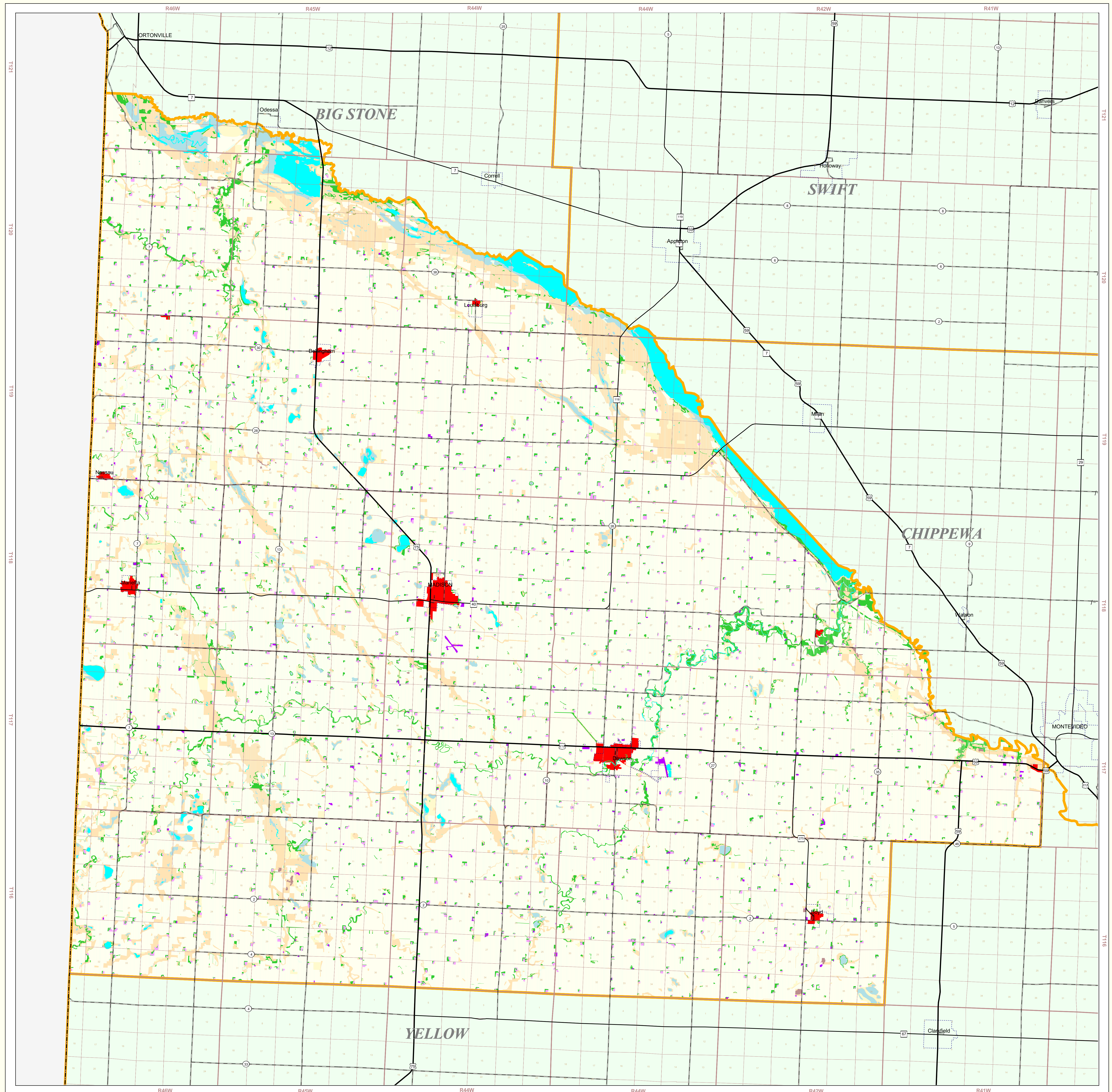


Lac Qui Parle County Land Use and Cover

State of Minnesota

1988 - 1990



MAP FEATURES

Land Use*

- Urban and Industrial
- Farmsteads and Rural Residences
- Rural Residential Development Complexes
- Other Rural Developments
- Cultivated Land
- Transitional Agricultural Land
- Grassland
- Grassland-Shrub-Tree Complex (Deciduous)
- Grassland-Shrub-Tree Complex (Coniferous)
- Deciduous Forest
- Coniferous Forest
- Water
- Wetlands
- Bare Soil and Open Mines
- Bare Rock
- Exposed Soil, Sandbars, and Sand Dunes
- Unclassified/Unlabeled/Outside State or County

Cities*
COUNTY SEAT
Other Cities

Highways*

- Interstate Highway
- U.S. Trunk Highway
- State Trunk Highway
- County State-Aid Highway (CSAH)

Public Land Survey*

- County Boundary
- Township & Range
- Section
- T34 Township
- R25W Range & Direction

Lac Qui Parle County Land Use Statistics

Source: The Land Management Information Center (LMIC)

DESCRIPTION	ACRES	% ACRES
Urban and Industrial	150.7	0.4
Farmsteads and Rural Residences	252.9	0.7
Rural Residential Development Complexes	120.0	0.3
Other Rural Developments	120.0	0.3
Cultivated Land	1,900.4	52.2
Transitional Agricultural Land	800.1	22.0
Grassland	420.2	11.5
Grassland-Shrub-Tree Complex (Deciduous)	100.0	2.8
Grassland-Shrub-Tree Complex (Coniferous)	1,300.0	35.7
Deciduous Forest	10.0	0.3
Coniferous Forest	10.0	0.3
Water	10.0	0.3
Wetlands	10.0	0.3
Bare Soil and Open Mines	10.0	0.3
Bare Rock	10.0	0.3
Exposed Soil	10.0	0.3
Unlabeled/Unlabeled/Outside State or County	22.0	0.6
TOTAL	30,143	100%

Land Use Data Sources*

- Bemidji State University - Department of Geography, Beltrami and Clearwater County Soil and Water Conservation Districts (Source Imagery Date: 1986)
- Manitoba Remote Sensing Centre (Source Imagery Date: 1991-1996)
- Rochester - Olmsted Planning Department (Source Imagery Date: 1992)
- The International Coalition (Source Imagery Date: 1988-1990)
- Metropolitan Council (Source Imagery Date: 1990)
- Department of Natural Resources, Division of Forestry - Resource Assessment (Source Imagery Date: 1992, 1985 and 1996)

Credits and Acknowledgements

Data collection and interpretation supported by the Minnesota Future Resources Fund as recommended by the Legislative Commission on Minnesota Resources (LCMR).

The following groups also participated over an extended period:

- DPA International
- The International Coalition
- Minnesota Board of Water and Soil Resources
- Minnesota Department of Natural Resources
- Minnesota Land Management Information Center
- North Dakota State University - Agricultural Engineering Department
- The Red River Management Board
- University of Minnesota - Department of Forest Resources
- University of North Dakota - Geography Department
- Wolfe, Smith and Nading

Map Projection: UTM, Extended Zone 15
Date: NAD83

Liability Statement

The Land Management Information Center (LMIC) does not warrant the results you may obtain by using this map. This map is provided "as is" without express or implied warranties, including warranties of merchantability and fitness. In no event will LMIC be liable for any consequential, incidental or special damages, including any lost profits or lost savings, even if a LMIC representative has been advised of the possibility of such damages or any other claim by any third party.

Distribution Information

This map was prepared in April, 1999. Both the map and the data used to create it are available from the Land Management Information Center at Minnesota Planning.

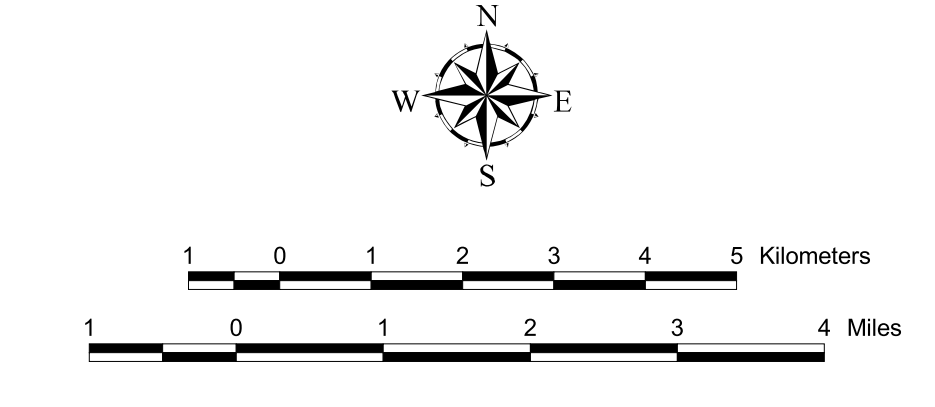
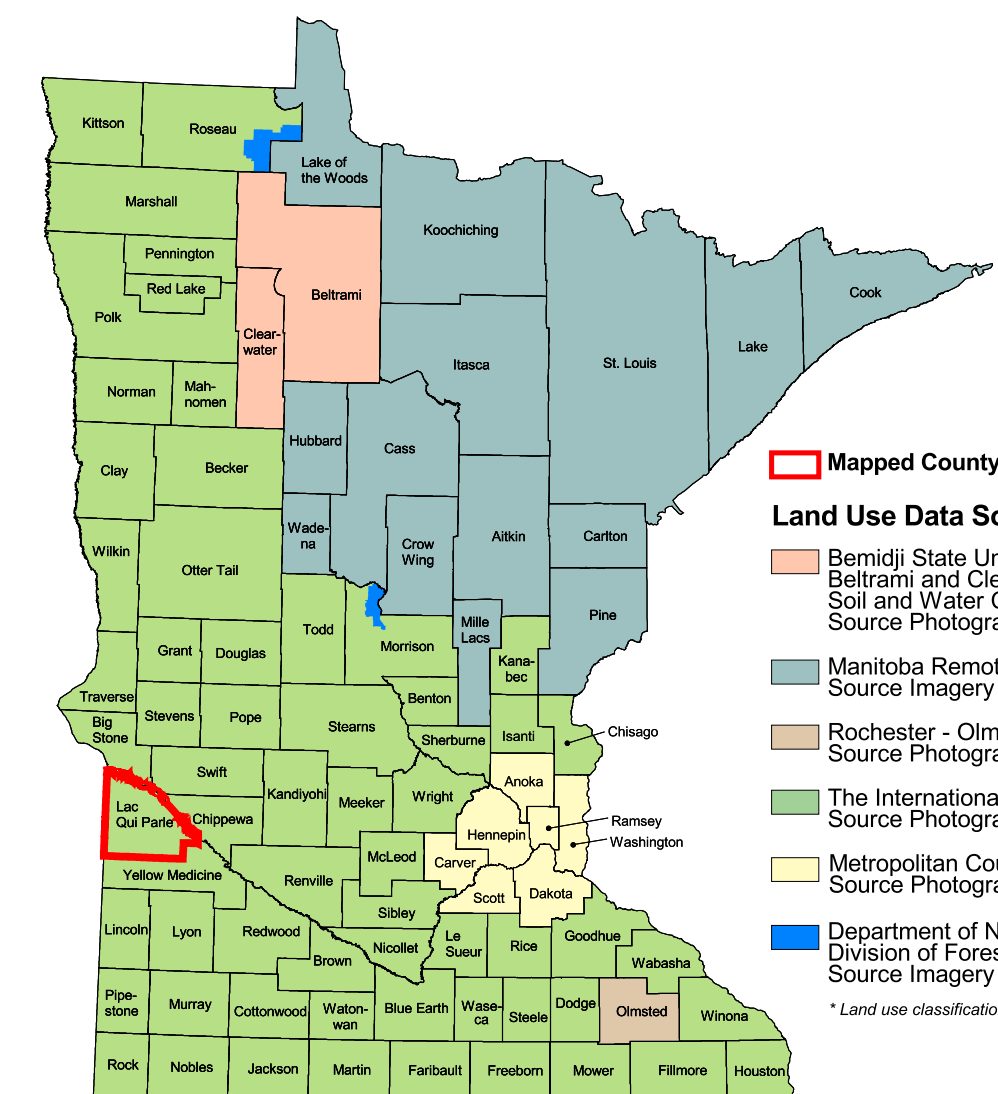
You may also view a generalized, interactive land use map of Minnesota, along with detailed information about land use data at:

<http://mapserver.lmic.state.mn.us/landuse>

For further assistance, or to order copies of this map, contact:

Land Management Information Center
658 Cedar Street
Cedarburg Building, Room 330
St. Paul, MN 55155

Phone: (651) 296-1211
FAX: (651) 296-1212
E-Mail: clearinghouse@mnplanning.state.mn.us



ABOUT THIS MAP

Data Sources: The land use / land cover categories displayed on this map were derived from sources that included the U. S. Department of Agriculture, Agricultural Stabilization and Conservation Service's (ASCS) low altitude, section-centered, 35mm color aerial photography taken during 1988-1990 and U.S. Fish and Wildlife Service National Wetlands Inventory (NWI) 1:24,000-scale field maps. Landsat satellite images (date unrecorded) were used to verify the classifications.

Data Interpretation and Computerization: The project was coordinated by The International Coalition for Land and Water Stewardship in the Red River Basin. Land use / land cover interpretation was performed by DPA International. The smallest area interpreted was approximately 2.5 acres.

Land use / land cover information was transcribed on to stable-base mylar registered to U.S. Geological Survey 1:24,000-scale topographic maps and then digitized by DPA International or Alexandria Technical College staff. Minnesota Department of Natural Resources MIS Bureau staff then joined the digitized files together to create county coverages.

On-line documentation: <http://lucy.lmic.state.mn.us/metadata/lu8889.html>