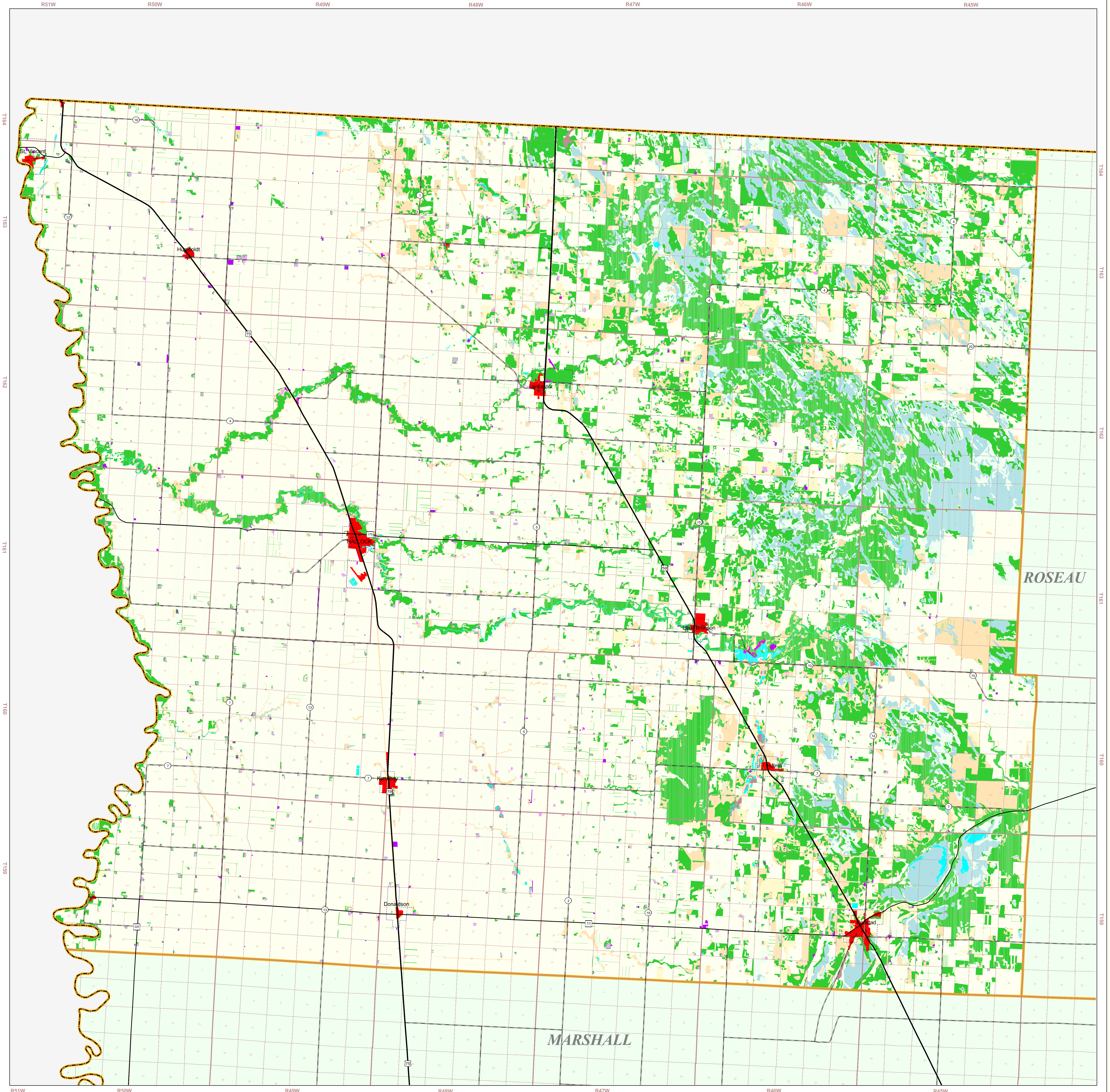


# Kittson County Land Use and Cover

State of Minnesota  
1988 - 1990



### MAP FEATURES

**Land Use**

- Urban and Industrial
- Farmsteads and Rural Residences
- Rural Residential Development Complexes
- Other Rural Developments
- Cultivated Land
- Transitional Agricultural Land
- Grassland
- Grassland-Shrub-Tree Complex (Deciduous)
- Grassland-Shrub-Tree Complex (Coniferous)
- Deciduous Forest
- Coniferous Forest
- Water
- Wetlands
- Gravel Pits and Open Mines
- Bare Rock
- Exposed Soil, Sandbars, and Sand Dunes
- Unclassified/Unlabeled/Outside State or County

**Cities**  
COUNTY SEAT  
Other Cities

**Highways**

- Interstate Highway
- U.S. Trunk Highway
- State Trunk Highway
- County State-Aid Highway (CSAH)

**Public Land Survey**

- County Boundary
- Township & Range
- Section
- T34 Township
- R25W Range & Direction

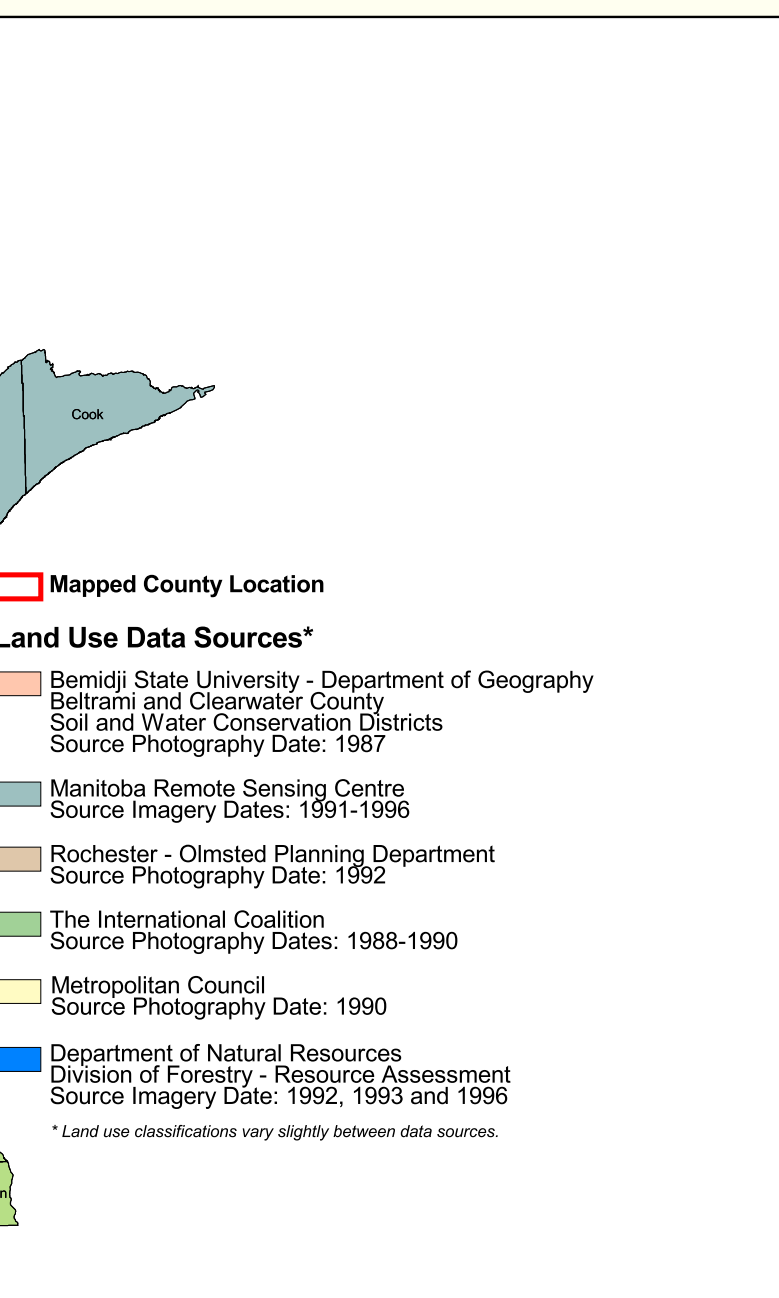
**Data Sources**

- The International Geostatistical Yearbook, 1988-1990
- USGS, 1:100,000 scale, 30' contour, 1977 and 1982
- Minnesota Department of Transportation, 1997-98
- Produced by the Minnesota Land Management Information Center from U.S. Geological Survey (USGS), 1:100,000 scale, 30' contour, 1977 and 1982

### Kittson County Land Use Statistics

Source: The Land Management Information Center (LMIC)

DESCRIPTION	ACRES	% ACRES
Urban and Industrial	2,052.1	1.3
Farmsteads and Rural Residences	3,311	2.1
Rural Residential Development Complexes	89	0.1
Other Rural Developments	881.2	0.5
Cultivated Land	66,603.4	42.4
Transitional Agricultural Land	140,724	89.1
Grassland	7,149	4.5
Grassland-Shrub-Tree Complex (Deciduous)	7,049	4.5
Grassland-Shrub-Tree Complex (Coniferous)	11,009	7.0
Deciduous Forest	2,822	1.8
Coniferous Forest	3,060.0	1.9
Water	719	0.4
Wetlands	2,822	1.8
Gravel Pits and Open Mines	0	0
Bare Rock	0	0
Exposed Soil	0	0
Unlabeled/Unclassified/Outside State or Outside County	2	0.0
<b>TOTAL</b>	<b>172,114</b>	<b>100%</b>



**ABOUT THIS MAP**

**Data Sources:** The land use / land cover categories displayed on this map were derived from sources that included the U.S. Department of Agriculture, Agricultural Stabilization and Conservation Service's (ASCS) low altitude, section-centered, 35mm color aerial photography taken during 1988-1990 and U.S. Fish and Wildlife Service National Wetlands Inventory (NWI) 1:24,000-scale field maps. Landsat satellite images (date unrecorded) were used to verify the classifications.

**Data Interpretation and Computerization:** The project was coordinated by The International Coalition for Land and Water Stewardship in the Red River Basin. Land use / land cover interpretation was performed by DPA International. The smallest area interpreted was approximately 2.5 acres.

**Land use / land cover information** was transcribed on to stable-base mylar registered to U.S. Geological Survey 1:24,000-scale topographic maps and then digitized by DPA International or Alexandria Technical College staff. Minnesota Department of Natural Resources MIS Bureau staff then joined the digitized files together to create county coverages.

**On-line documentation:** <http://lucy.lmhc.state.mn.us/metadata/usa89.html>

### Credits and Acknowledgments

Data collection and interpretation supported by the Minnesota Future Resources Fund as recommended by the Legislative Commission on Minnesota Resources (LCMR).

The following groups also participated over an extended period:

- DPA International
- The International Coalition
- Minnesota Board of Water and Soil Resources
- Minnesota Department of Natural Resources
- Minnesota Land Management Information Center
- North Dakota State University - Agricultural Engineering Department
- The Red River Management Board
- University of Minnesota - Department of Forest Resources
- University of North Dakota - Geography Department
- Wolfe, Smith and Nading

**Map Projection:** UTM, Extended Zone 15  
**Datum:** NAD83

**Liability statement**  
The Land Management Information Center (LMIC) does not warrant the results you may obtain by using this map. This map is provided "as is" without express or implied warranties, including warranties of merchantability and fitness. In no event will LMIC be liable for any consequential, incidental or special damages, including any lost profits or lost savings, even if a LMIC representative has been advised of the possibility of such damages or any other claim by any third party.

**Distribution information**  
This map was prepared in April, 1999. Both the map and the data used to create it are available from the Land Management Information Center at Minnesota Planning.

You may also view a generalized, interactive land use map of Minnesota, along with detailed information about land use data at:  
<http://mapserver.lmhc.state.mn.us/landuse>

**For further assistance, or to order copies of this map, contact:**  
Land Management Information Center  
658 Cedar Street  
Caterpillar Building, Room 330  
St. Paul, MN 55155  
Phone: (651) 296-1211  
FAX: (651) 296-1212  
E-Mail: [clearinghouse@lmplan.state.mn.us](mailto:clearinghouse@lmplan.state.mn.us)