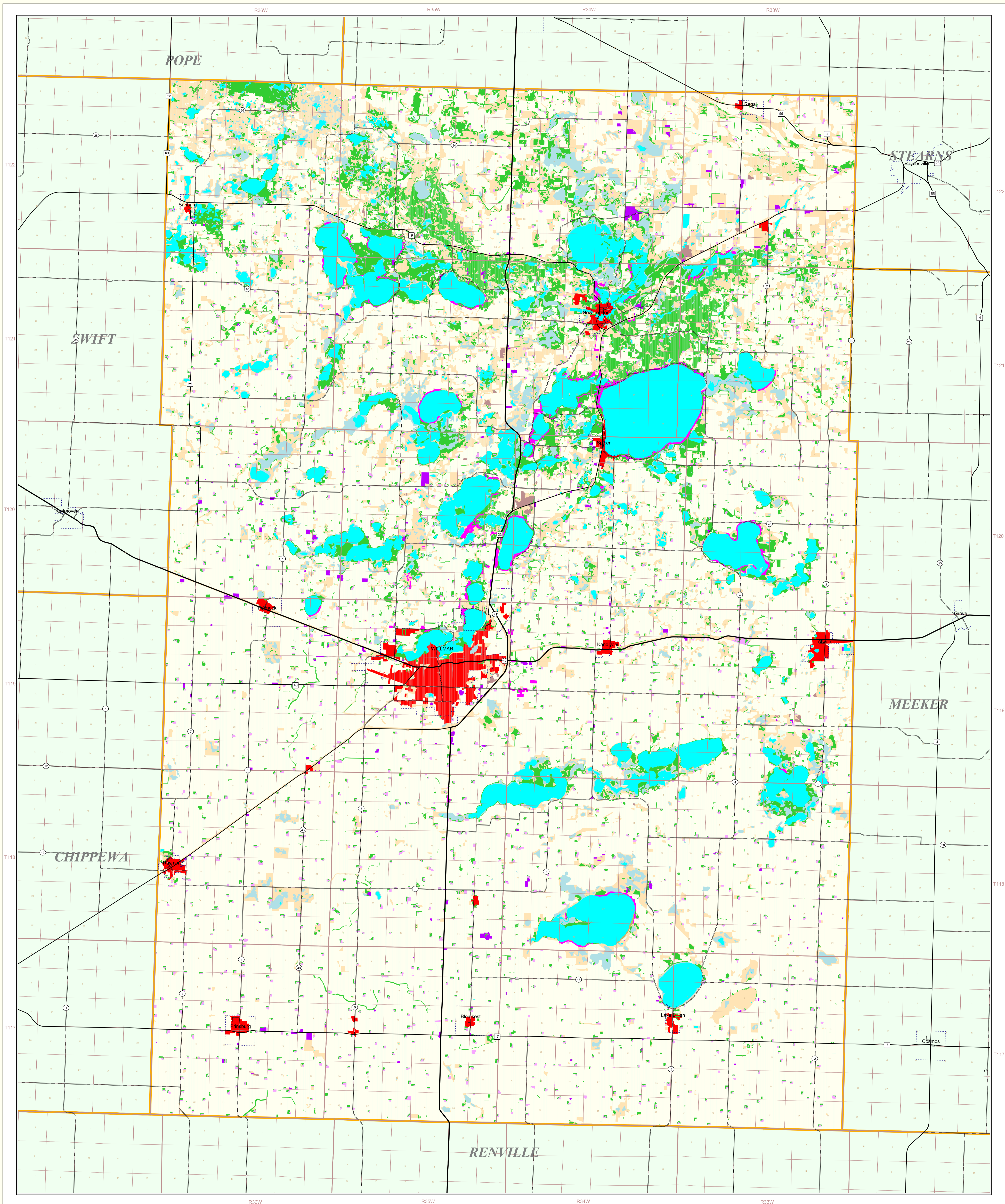


Kandiyohi County Land Use and Cover

State of Minnesota
1988 - 1990



MAP FEATURES

- Land Use**
 - Urban and Industrial
 - Farmsteads and Rural Residences
 - Rural Residential Development Complexes
 - Other Rural Developments
 - Cultivated Land
 - Transitional Agricultural Land
 - Grassland
 - Grassland-Shrub-Tree Complex (Deciduous)
 - Grassland-Shrub-Tree Complex (Coniferous)
 - Deciduous Forest
 - Coniferous Forest
 - Water
 - Wetlands
 - Gravel Pits and Open Mines
 - Bare Rock
 - Exposed Soil, Sandbars, and Sand Dunes
 - Unclassified/Unlabeled/Outside State or County
- Cities**
 - COUNTY SEAT
 - Other Cities
 - Municipal Boundary
- Highways**
 - Interstate Highway
 - U.S. Trunk Highway
 - State Trunk Highway
 - County State-Aid Highway (CSAH)
- Public Land Survey**
 - State Boundary
 - County Boundary
 - Township & Range Section
 - T34 Township
 - R25W Range & Direction

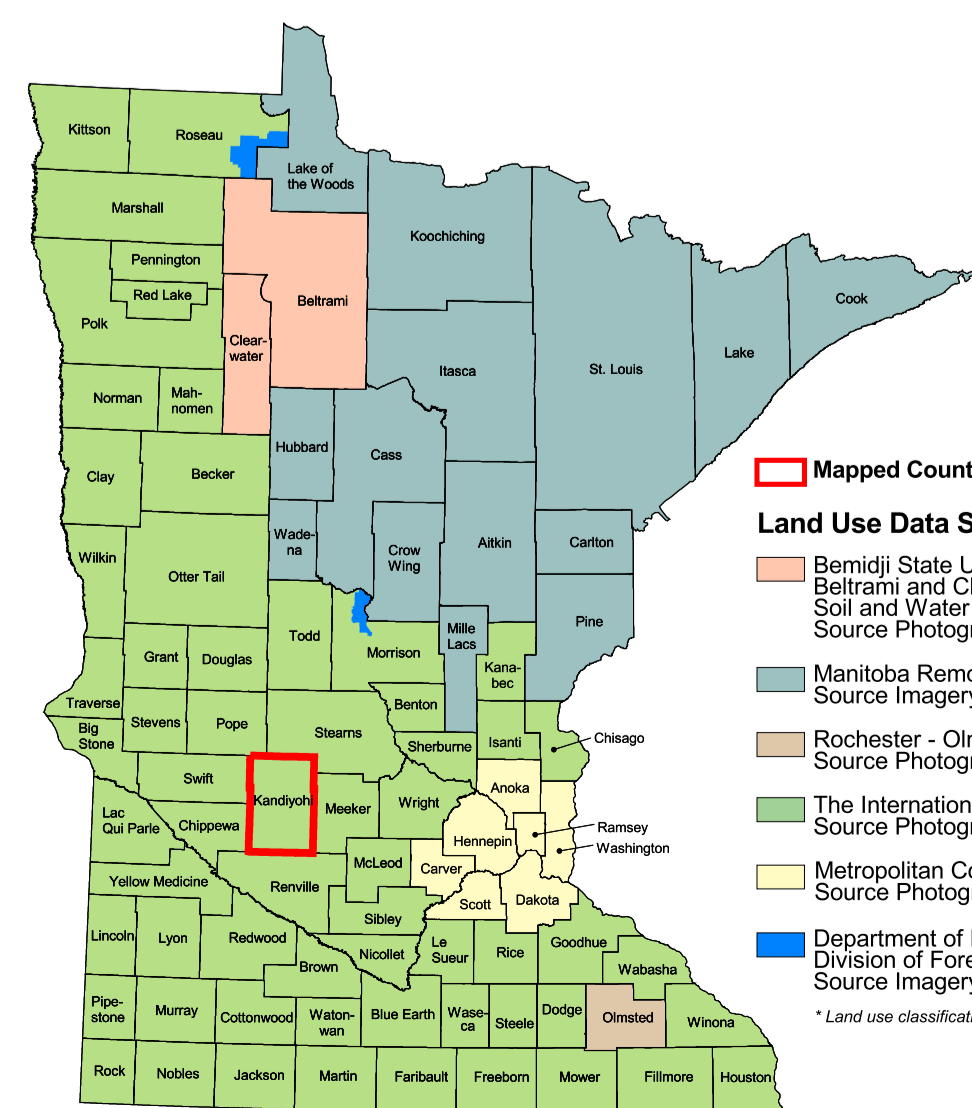
Data Sources

- The International Geosphere
- Topographic General Atlas
- Minnesota Department of Transportation, 1991-92

Kandiyohi County Land Use Statistics

Source: The Land Management Information Center (LMIC)

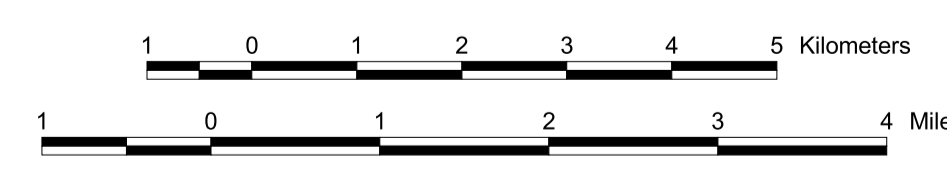
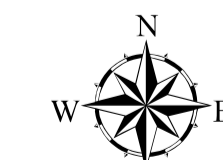
DESCRIPTION	ACRES	% ACRES
Urban and Industrial	1,265.8	1.1
Farmsteads and Rural Residences	1,259.2	1.1
Rural Residential Development Complexes	1,259.2	1.1
Other Rural Developments	1,259.2	1.1
Cultivated Land	3,727.1	3.4
Transitional Agricultural Land	1,259.2	1.1
Grassland	1,259.2	1.1
Grassland-Shrub-Tree Complex (Deciduous)	1,259.2	1.1
Grassland-Shrub-Tree Complex (Coniferous)	1,259.2	1.1
Deciduous Forest	1,259.2	1.1
Coniferous Forest	1,259.2	1.1
Water	1,259.2	1.1
Wetlands	1,259.2	1.1
Gravel Pits and Open Mines	1,259.2	1.1
Bare Rock	1,259.2	1.1
Exposed Soil, Sandbars, and Sand Dunes	1,259.2	1.1
Unclassified/Unlabeled/Outside State or County	1,259.2	1.1
TOTAL	96,737	100%



Land Use Data Sources*

- Berndt State University - Department of Geography
- Beltrami and Clearwater County Soil and Water Conservation Districts
- Source Photography Date: 1986
- Marquette Remote Sensing Center
- Source Imagery Dates: 1991-1996
- Rochester - Climatic Planning Department
- Source Photography Date: 1992
- The International Geosphere
- Source Photography Dates: 1988-1990
- Metropolitan Council
- Source Photography Date: 1990
- Department of Natural Resources
- Division of Forestry - Resource Assessment
- Source Imagery Date: 1992, 1993 and 1996

*Land use classifications vary slightly between data sources.



ABOUT THIS MAP

Data Sources: The land use / land cover categories displayed on this map were derived from sources that included the U.S. Department of Agriculture, Agricultural Stabilization and Conservation Service's (ASCS) low altitude, section-centered, 30mm color aerial photography taken during 1988-1991 and U.S. Fish and Wildlife Service National Wetlands Inventory (NWI) 1:24,000-scale field maps. Landsat satellite images (date unrecorded) were used to verify the classifications.

Data Interpretation and Computerization: The project was coordinated by The International Geosphere for Land and Water Stewardship in the Red River Basin. Land use / land cover interpretation was performed by GFA International. The smallest area interpreted was approximately 2.5 acres.

Land use / land cover information was transcribed on to stable-base mylar registered to U.S. Geological Survey 1:24,000-scale topographic maps and then digitized by GFA International or Alexandria Technical College staff, Minnesota Department of Natural Resources MIS Bureau staff then joined the digitized files together to create county coverages.

On-line documentation: <http://lucg.lmcc.state.mn.us/metadata/huse89.html>

Credits and Acknowledgments

Data collection and interpretation supported by the Minnesota Future Resources Fund as recommended by the Legislative Commission on Minnesota Resources (LCMR).

The following groups also participated over an extended period:

- Alxandria Technical College - GIS Program
- GFA International
- The International Geosphere
- Minnesota Board of State and Soil Resources
- Minnesota Department of Natural Resources
- Minnesota Land Management Information Center
- North Dakota State University - Agricultural Engineering Department
- The Red River Management Board
- University of Minnesota - Department of Forest Resources
- University of North Dakota - Geography Department
- Wideman, Smith and Nalling

Map Projection: UTM, Extended Zone 15

Datum: NAD83

Liability Statement
The Land Management Information Center (LMIC) does not warrant the results you may obtain by using this map. This map is provided for informational purposes only and is not intended to be used for any purpose other than that for which it was prepared. The user assumes all liability for any loss or damage, including any lost profits or lost savings, even if a LMIC representative has been advised of the possibility of such damages or any other claim by any third party.

Distribution Information
This map was prepared in April, 1999. Both the map and the data used to create it are available from the Land Management Information Center at Minnesota Planning.

You may also view a generalized, interactive land use map of Minnesota, along with detailed information about land use data at:

<http://mapserver.lmcc.state.mn.us/landuse>

For further assistance, or to order copies of this map, contact:

Land Management Information Center
608 Cedar Street
Confidential Building, Room 330
St. Paul, MN 55155
Phone: (651) 296-1211
FAX: (651) 296-1212
E-Mail: clawing@lucg.lmcc.state.mn.us

