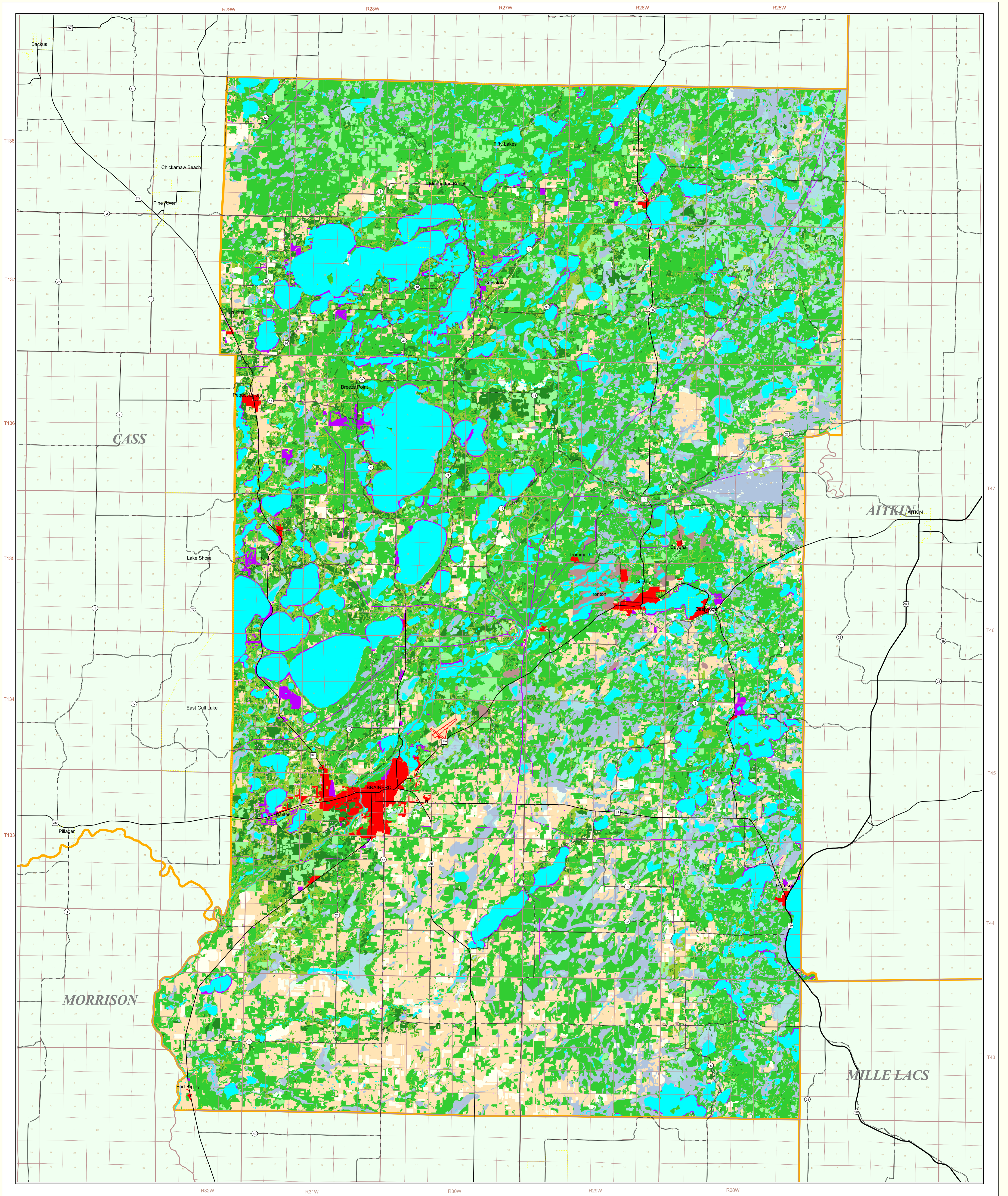


Crow Wing County Land Use and Cover

State of Minnesota

June 18, 1995



MAP FEATURES

Land Use

- Urban/Industrial
- Farmsteads and Rural Residences
- Other Rural Developments
- Cultivated Land
- Grassland
- Shrubby Grassland
- Regeneration/Young Forest
- Mixed Forest
- Deciduous Forest
- Coniferous Forest
- Wetlands: Bogs
- Wetlands: Marsh and Fens
- Water
- Gravel Pits and Open Mines
- Bare Rock

Cities

- COUNTY SEAT
- Other Cities

Highways

- Interstate Highway
- U.S. Trunk Highway
- State Trunk Highway
- County State-Aid Highway (CSAH)

Public Land Survey

- State Boundary
- County Boundary
- Township and Range
- Section

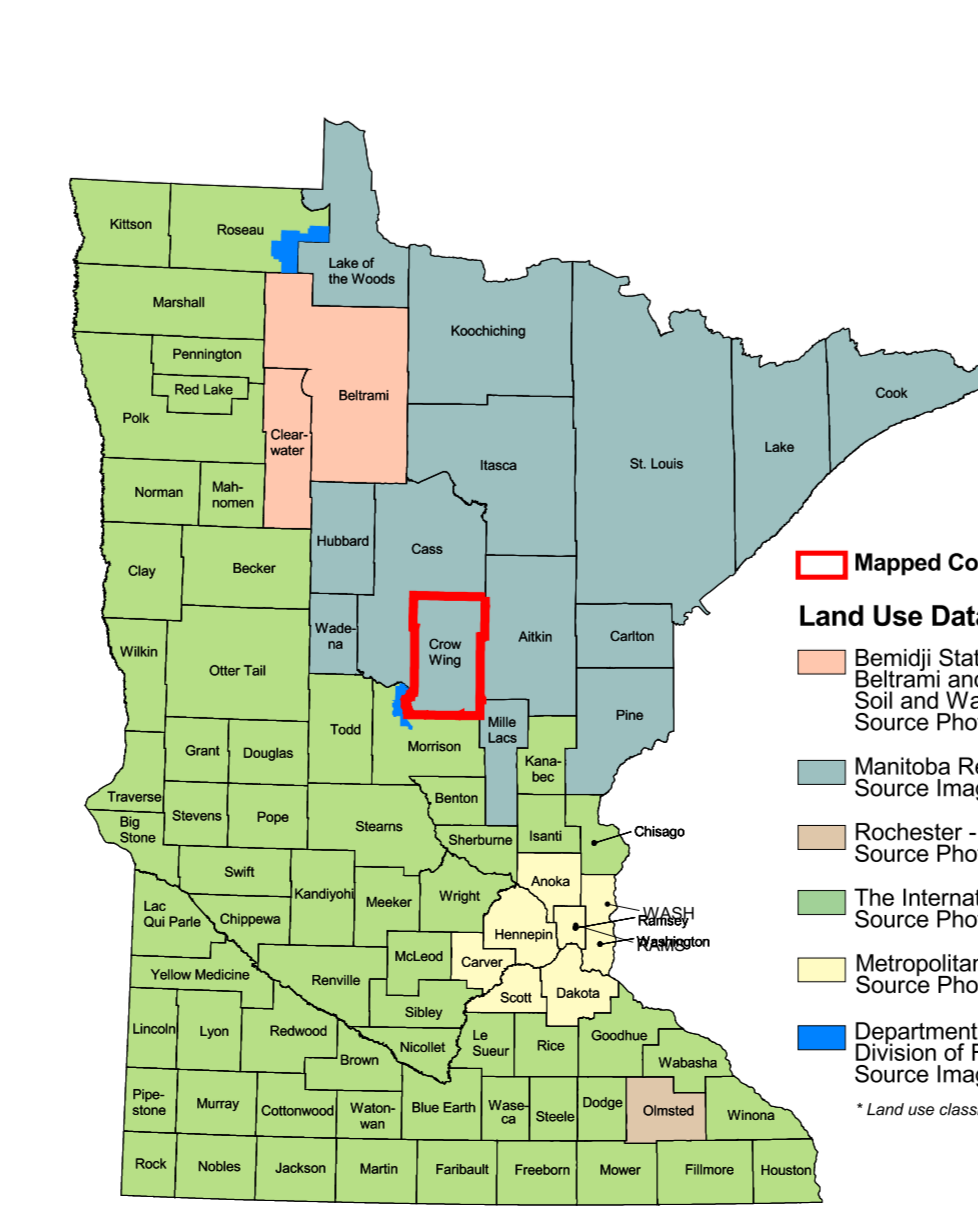
Data Sources

1. Minnesota Remote Sensing Center, Source Imagery Dates: 1981-1988
 2. Minnesota Remote Sensing Center, Source Imagery Dates: 1981-1988
 3. U.S. Bureau of the Census, 1986
 4. Minnesota Department of Transportation, 1987-88

Crow Wing County Land Use Statistics

Source: The Land Management Information Center (LMIC)

DESCRIPTION	ACRES	% ACRES
Urban/Industrial	868.8	0.9
Farmsteads and Rural Residences	3344	0.4
Other Rural Developments	11660.2	1.6
Cultivated Land	15284	1.8
Grassland	114,926.5	15.0
Shrubby Grassland	4273.2	0.6
Regeneration/Young Forest	2553.9	3.5
Mixed Forest	4307.1	5.8
Deciduous Forest	27,266.3	38.0
Coniferous Forest	21,818.7	4.3
Wetlands: Bogs	2,008	0.1
Wetlands: Marsh and Fens	41,587.3	61.1
Water	19,554.6	28.3
Gravel Pits and Open Mines	328.9	0.4
Bare Rock	8.9	<0.1
TOTAL	738,480	100%



Map of County Location

Land Use Data Sources

- Remote State University - Department of Geography, Beltrami and Clearwater Counties, Source Imagery Dates: 1991-1995
- Minnesota Remote Sensing Center, Source Imagery Dates: 1981-1988
- Rochester - Olmsted Planning Department, Source Imagery Dates: 1992
- The International Coalition, Source Imagery Dates: 1988-1990
- Metropolitan Council, Source Imagery Date: 1990
- Department of Natural Resources, Division of Forestry - Resource Assessment, Source Imagery Dates: 1992, 1993 and 1996

ABOUT THIS MAP

Data Sources: With the exception of roads, the land use / land cover categories displayed on this map were derived from 30 meter resolution Landsat Thematic Mapper satellite imagery, bands 4 and 5. Satellite imagery dates ranged from September, 1987 to August, 1988. The road category was created from road lines found in the Minnesota Department of Transportation's 1:250,000 scale StateMap77 data set. Classifications were verified using 1:50,000 color and black and white National Wetland Inventory photographs, and U.S. Forest Service plot data were used to check the forest classification for Lake County.

Data Interpretation and Generalization: The Minnesota Remote Sensing Center (MRSC) interpreted the Landsat imagery using a supervised maximum likelihood classification. Three classification iterations were typically performed prior to an exhaustive manual verification process using the 1:50,000 photographs. Transitional features (e.g. corridors, mixed deciduous forest) were provided for the user by developing a classification using relatively pure samples of individual types and then by performing a linear classification using a 10% confidence confidence interval. Mixed classes fall outside of the pure class confidence interval and are assigned to a single mixed class.

MRSC used the SERIS plot data to reclassify some Lake County coniferous areas to mixed forest. The "regeneration/young forest" category was used for that data by Minnesota Department of Natural Resources, Forestry Division personnel, after which they revised the category definition to include some oak trees in some areas.

This data exhibits a per class and overall classification accuracy of not less than 95 percent.

On-line documentation: <http://lmi.cer.rutgers.edu/landuse/htm/3a.html>

Credits and Acknowledgements

Data collection and interpretation supported by the Minnesota Future Resources Fund as recommended by the Legislative Commission on Minnesota Resources (LCMR).

The following groups also participated over an extended period:

- Linnet Geosystems, Winnipeg
- The Manitoba Remote Sensing Centre, Winnipeg
- Minnesota Department of Natural Resources
- University of Minnesota - Department of Forest Resources
- Widshelm, Smith and Nolting

Map Projection: UTM, Extended Zone 15
Datum: NAD83

Liability statement
 The Land Management Information Center (LMIC) does not warrant the results you may obtain by using this map. This map is provided "as is" without warranty or implied warranties, including warranties of merchantability and fitness. In no event will LMIC be liable for any consequential, incidental or special damages, including any and all profits or lost savings, even if a LMIC representative has been advised of the possibility of such damages or any other claim by any third party.

Distribution Information
 This map was prepared in April, 1995. Both the map and the data used to create it are available from the Land Management Information Center at Minnesota Planning.

You may also view a generalized, interactive land use map of Minnesota, along with detailed information about land use data at:
<http://mapserver.lmic.state.mn.us/landuse>

For further assistance, or to order copies of this map, contact:
 Land Management Information Center
 608 Cedar Street
 Centennial Building, Room 330
 St. Paul, MN 55155
 Phone: (651) 296-1211
 FAX: (651) 296-1212
 E-Mail: clearinghouse@mnplanning.state.mn.us

