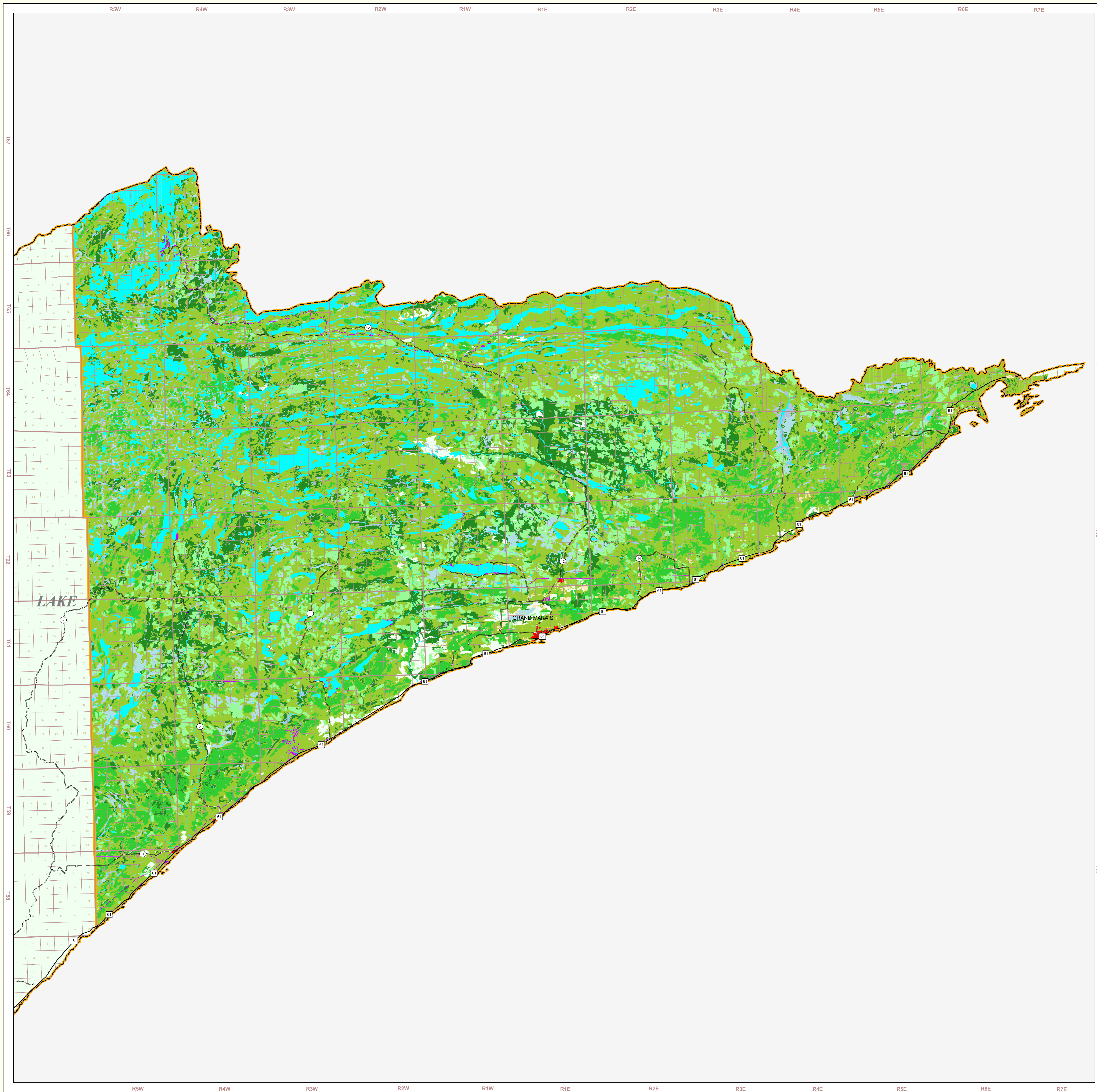


Cook County Land Use and Cover

State of Minnesota

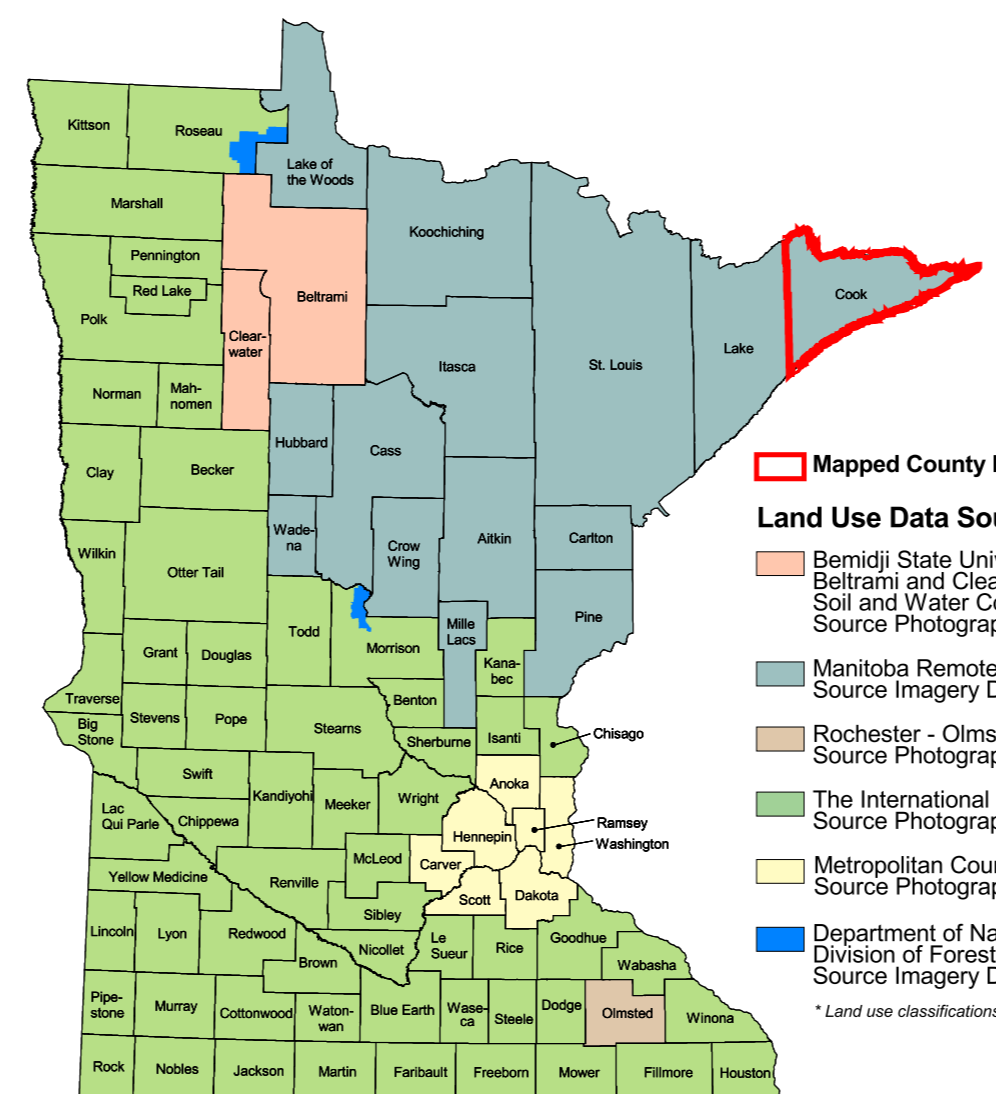
June 1, 1994



- MAP FEATURES**
- Land Use***
- Urban/Industrial
 - Farmsteads and Rural Residences
 - Other Rural Developments
 - Cultivated Land
 - Grassland
 - Shrubby Grassland
 - Regeneration/Young Forest
 - Mixed Forest
 - Deciduous Forest
 - Coniferous Forest
 - Wetlands: Bogs
 - Wetlands: Marsh and Fans
 - Water
 - Gravel Pits and Open Mines
 - Bare Rock
- Cities***
- COUNTY SEAT
 - Other Cities
- Highways***
- Interstate Highway
 - U.S. Trunk Highway
 - State Trunk Highway
 - County State-Aid Highway (CSAH)
- Public Land Survey***
- State Boundary
 - County Boundary
 - Township & Range Section
 - T34 Township
 - R25W Range & Direction
- Data Sources**
- 1 Manitoba Remote Sensing Centre, Source Imagery Dates: 1991-1999
 - 2 USGS Low General Relief, U.S. Bureau of the Census, 1985
 - 3 Minnesota Department of Transportation, 1997-98
 - 4 Produced by the Minnesota Land Management Information Center from U.S. Geological Survey (USGS) 1:50,000 scale 30'x30' quadrangle maps published between 1917 and 1996

Cook County Land Use Statistics
Source: The Land Management Information Center (LMIC)

DESCRIPTION	ACRES	% ACRES
Urban/Industrial	832.4	<0.1
Farmsteads and Rural Residences	338.0	<0.1
Other Rural Developments	2309.2	0.2
Cultivated Land	0.0	0.0
Grassland	2745.1	0.3
Shrubby Grassland	13871.7	1.3
Regeneration/Young Forest	86219.2	8.4
Mixed Forest	520700.8	50.7
Deciduous Forest	114543.3	11.1
Coniferous Forest	117114.5	11.4
Wetlands: Bogs	33582.2	3.3
Wetlands: Marsh and Fans	24043.0	2.3
Water	110424.4	10.7
Gravel Pits and Open Mines	654.5	0.1
Bare Rock	190.5	0.0
TOTAL	1027578.8	100%



ABOUT THIS MAP

Data Sources: With the exception of roads, the land use / land cover categories displayed on this map were derived from 30 meter resolution Landsat Thematic Mapper satellite imagery, bands 1, 4 and 5. Satellite imagery dates ranged from September, 1991 to August, 1996. The road category was created from road layers found in the Minnesota Department of Transportation's 1:24,000 scale BaseMap77 data set. Classifications were verified using 1:62,000 color and black and white infrared National High Altitude Photography (NHAP), U.S. Forest Service plot data were used to check the forest classifications for Lake County.

Data Interpretation and Computerization: The Manitoba Remote Sensing Centre (MRSC) interpreted the Landsat imagery using a supervised maximum likelihood classification. These classification iterations were typically performed prior to an exhaustive manual verification/editing process using the NHAP photography. Transition feature types (e.g. coniferous, mixed, deciduous forest classes) were processed by first describing a classification using relatively pure samples of individual types and then by performing a limited classification around a tightly controlled confidence interval. Mixed classes falling outside of the pure class confidence interval were then assigned to a single mixed class.

MRSC used the USFS plot data to reclassify some Lake County coniferous areas to mixed forest. The "regeneration/young forest" category was spot field-checked by Minnesota Department of Natural Resources, Forestry Division personnel, after which they revised the category definition to include some other trees on poorer sites.

This data exhibits a per class and overall classification accuracy of not less than 95 percent.

On-line documentation: http://lmic.lmcc.state.mn.us/metadata/mrsc_bu.html

Credits and Acknowledgements

Data collection and interpretation supported by the Minnesota Future Resources Fund as recommended by the Legislative Commission on Minnesota Resources (LCMR).

The following groups also participated over an extended period:

- Linnet Geosystems, Winnipeg
- The Manitoba Remote Sensing Centre, Winnipeg
- Minnesota Department of Natural Resources
- University of Minnesota - Department of Forest Resources
- Wideman, Smith and Nolting

Map Projection: UTM, Extended Zone 15
Datum: NAD83

Liability Statement

The Land Management Information Center (LMIC) does not warrant the results you may obtain by using this map. This map is provided "as is" without express or implied warranties, including warranties of merchantability and fitness. In no event will LMIC be liable for any consequential, incidental or special damages, including any lost profits or lost savings, even if a LMIC representative has been advised of the possibility of such damages or any other claim by any third party.

Distribution Information

This map was prepared in April, 1999. Both the map and the data used to create it are available from the Land Management Information Center at Minnesota Planning.

<http://mapserver.lmic.state.mn.us/landuse>

For further assistance, or to order copies of this map, contact:

Land Management Information Center
658 Cedar Street
Centennial Building, Room 330
St. Paul, MN 55155

Phone: (651) 296-1211
FAX: (651) 296-1212
E-Mail: clearinghouse@lmiplanning.state.mn.us

