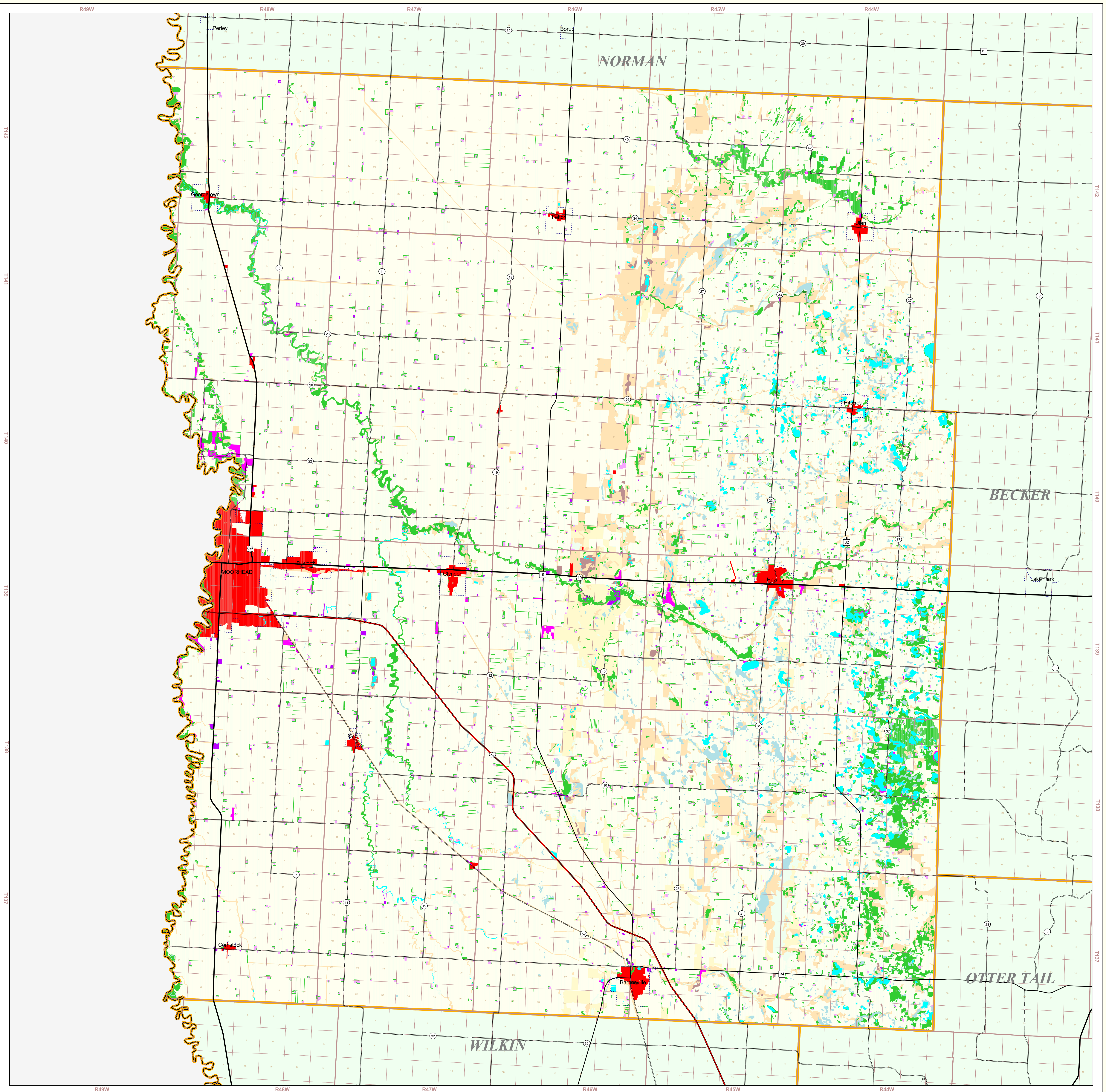


# Clay County Land Use and Cover

State of Minnesota  
1988 - 1990



### MAP FEATURES

**Land Use\***

- Urban and Industrial
- Farmsteads and Rural Residences
- Rural Residential Development Complexes
- Other Rural Developments
- Cultivated Land
- Transitional Agricultural Land
- Grassland
- Grassland-Shrub-Tree Complex (Deciduous)
- Grassland-Shrub-Tree Complex (Coniferous)
- Deciduous Forest
- Coniferous Forest
- Water
- Wetlands
- Gravel Pits and Open Mines
- Bare Rock
- Exposed Soil, Sandbars, and Sand Dunes
- Unclassified/Unlabeled/Outside State or County

**Cities\***

- COUNTY SEAT
- Other Cities
- Municipal Boundary

**Highways\***

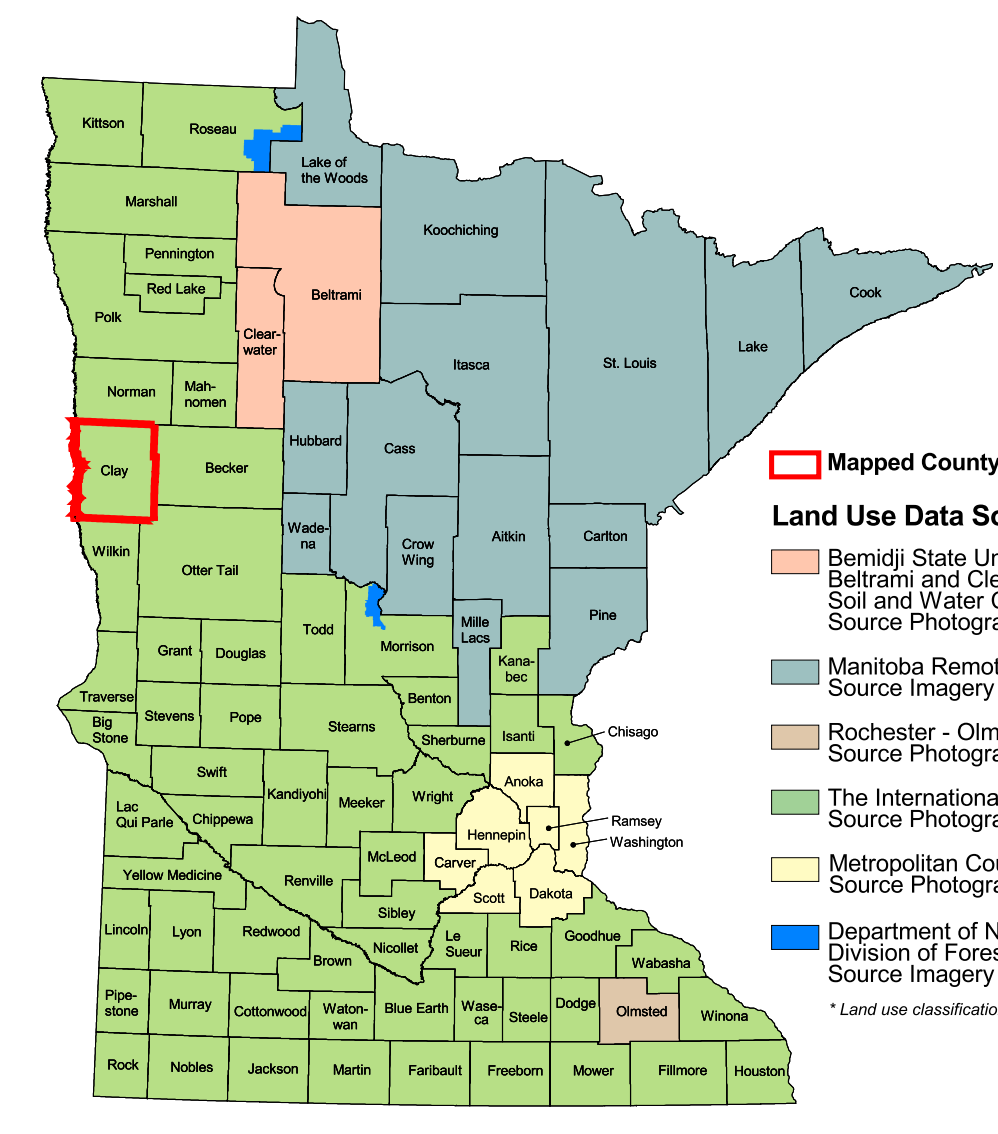
- Interstate Highway
- U.S. Trunk Highway
- State Trunk Highway
- County State-Aid Highway (CSAH)

**Public Land Survey\***

- State Boundary
- County Boundary
- Township & Range
- Section
- T34 Township
- R25W Range & Direction

**Data Sources**

- The International Colection Source Photography Dates: 1988-1990
- USGS National Wetlands Inventory (NWI) 1:24,000-scale field maps, Landsat satellite images (date unrecorded)
- Minnesota Department of Transportation, 1997-98
- Produced by the Minnesota Land Management Information Center from U.S. Geological Survey (USGS) 1:100,000-scale 30'x60' topographic maps published between 1977 and 1986



### ABOUT THIS MAP

**Data Sources:** The land use / land cover categories displayed on this map were derived from sources that included the U.S. Department of Agriculture, Agricultural Stabilization and Conservation Service's (ASCS) low altitude, section-centered, 30mm color aerial photography taken during 1988-1990 and U.S. Fish and Wildlife Service National Wetlands Inventory (NWI) 1:24,000-scale field maps. Landsat satellite images (date unrecorded) were used to verify the classifications.

**Data Interpretation and Computerization:** The project was coordinated by The International Coalition for Land and Water Stewardship in the Red River Basin. Land use / land cover interpretation was performed by DPA International. The smallest area interpreted was approximately 2.5 acres.

**Land Use Data Sources\***

- Bemidji State University - Department of Geography, Beltrami and Clearwater County Soil and Water Conservation Districts Source Imagery Dates: 1991-1996
- Manitoba Remote Sensing Centre Source Imagery Dates: 1991-1996
- Rochester - Olmsted Planning Department Source Imagery Date: 1992
- The International Colection Source Photography Dates: 1988-1990
- Metropolitan Council Source Imagery Date: 1990
- Department of Natural Resources Division of Forestry - Resource Assessment Source Imagery Dates: 1992, 1985 and 1990

\* Land use classifications vary slightly between data sources.

**Map Projection:** UTM, Extended Zone 15  
**Datum:** NAD83

**Liability statement**  
The Land Management Information Center (LMIC) does not warrant the results you may obtain by using this map. This map is provided "as is" without express or implied warranties, including warranties of merchantability and fitness. In no event will LMIC be liable for any consequential, incidental or special damages, including any lost profits or lost savings, even if a LMIC representative has been advised of the possibility of such damages or any other claim by any third party.

**Distribution information**  
This map was prepared in April, 1999. Both the map and the data used to create it are available from the Land Management Information Center at Minnesota Planning.

You may also view a generalized, interactive land use map of Minnesota, along with detailed information about land use data at:  
<http://mapserver.lmic.state.mn.us/landuse>

**For further assistance, or to order copies of this map, contact:**  
Land Management Information Center  
658 Cedar Street  
Cedarburg Building, Room 330  
St. Paul, MN 55155  
Phone: (651) 296-1211  
FAX: (651) 296-1212  
E-Mail: [clearinghouse@lmplan.state.mn.us](mailto:clearinghouse@lmplan.state.mn.us)

### Credits and Acknowledgements

Data collection and interpretation supported by the Minnesota Future Resources Fund as recommended by the Legislative Commission on Minnesota Resources (LCMR).

The following groups also participated over an extended period:

- DPA International
- The International Coalition
- Minnesota Board of Water and Soil Resources
- Minnesota Department of Natural Resources
- Minnesota Land Management Information Center
- North Dakota State University - Agricultural Engineering Department
- The Red River Management Board
- University of Minnesota - Department of Forest Resources
- University of North Dakota - Geography Department
- Wolfe, Smith and Nading

