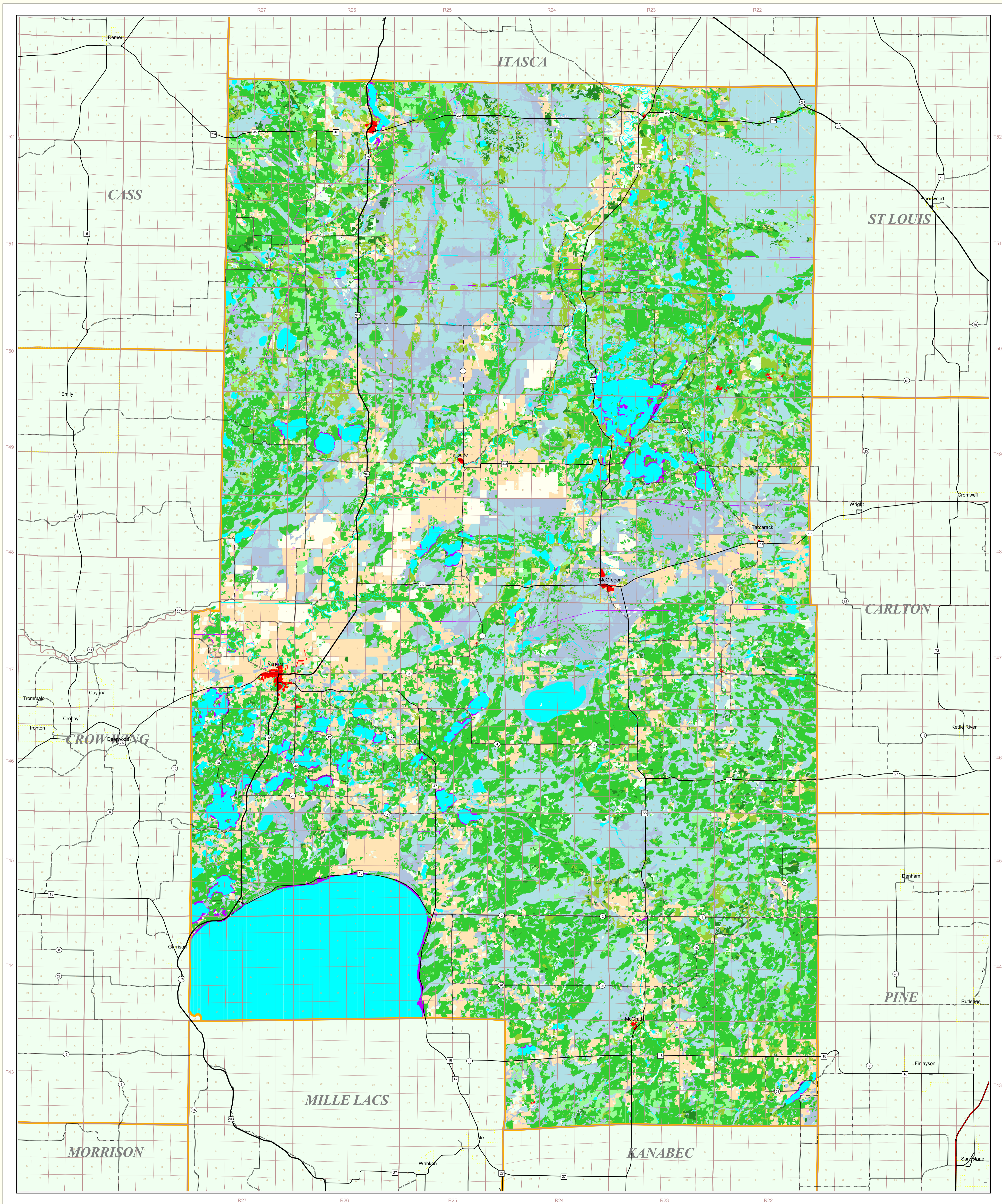


Aitkin County Land Use and Cover

State of Minnesota

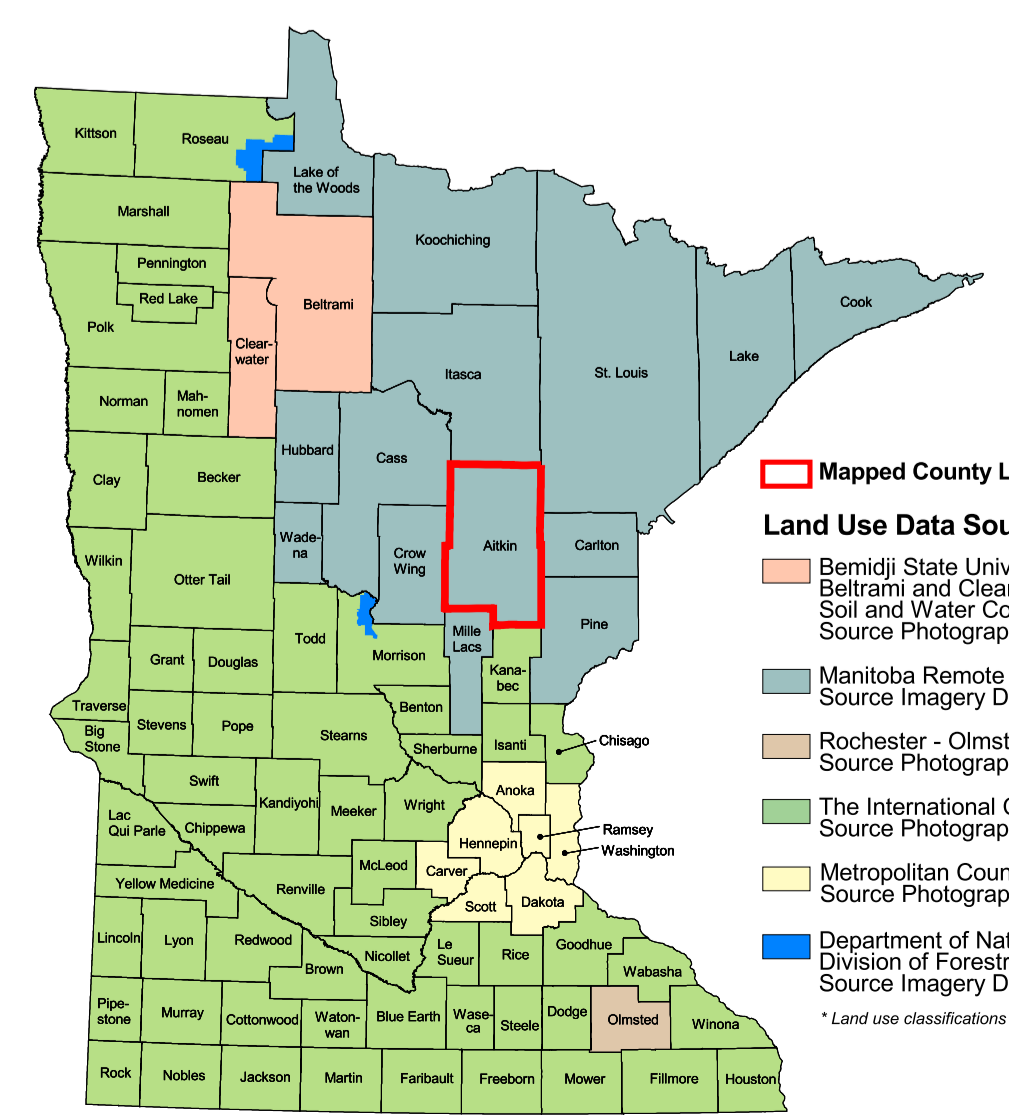
June 13, 1996



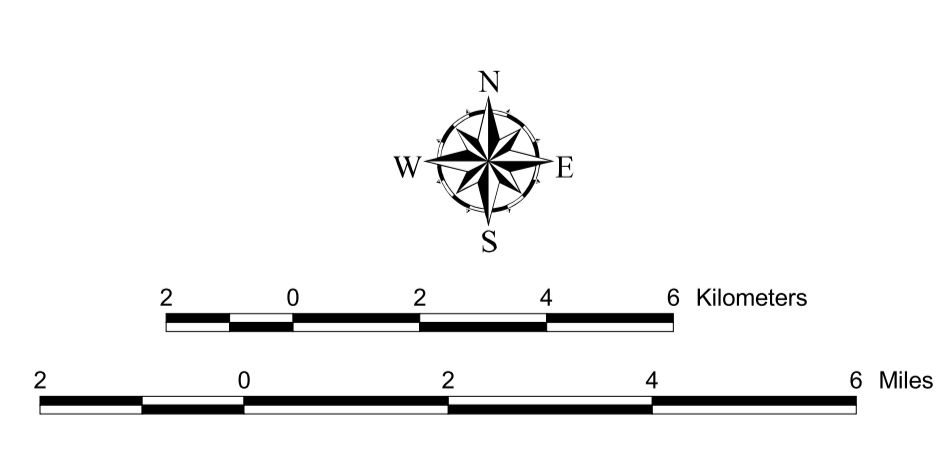
- MAP FEATURES**
- Land Use**
 - Urban/Industrial
 - Farmsteads and Rural Residences
 - Other Rural Developments
 - Cultivated Land
 - Grassland
 - Shrubby Grassland
 - Regeneration/Young Forest
 - Mixed Forest
 - Deciduous Forest
 - Coniferous Forest
 - Wetlands: Bogs
 - Wetlands: Marsh and Fens
 - Water
 - Gravel Pits and Open Mines
 - Bare Rock
 - Cities**
 - COUNTY SEAT
 - Other Cities
 - Highways**
 - Interstate Highway
 - U.S. Trunk Highway
 - State Trunk Highway
 - County State-Aid Highway (CSAH)
 - Public Land Survey**
 - State Boundary
 - County Boundary
 - Township & Range
 - Section

Aitkin County Land Use Statistics
Source: The Land Management Information Center (LMIC)

DESCRIPTION	ACRES	% ACRES
Urban/Industrial	1,623	0.11
Farmsteads and Rural Residences	1,953	0.12
Other Rural Developments	6,713	0.45
Cultivated Land	18,529	1.15
Grassland	198,756	12.4
Shrubby Grassland	32,758	2.0
Regeneration/Young Forest	38,402	2.4
Mixed Forest	65,813	4.1
Deciduous Forest	370,165	22.9
Coniferous Forest	15,552	1.0
Wetlands: Bogs	310,104	19.3
Wetlands: Marsh and Fens	133,325	8.3
Water	120,427	7.5
Gravel Pits and Open Mines	556	<0.1
Bare Rock	2	<0.1
TOTAL	1,272,776	100%



- Map Projection**
UTM, Extended Zone 15
Datum: NAD83
- Land Use Data Sources**
- Remote Sensing - Department of Geography, University of Minnesota, 1987
 - Soil and Water Conservation Districts, Source Imagery Dates: 1991-1995
 - Minnesota Remote Sensing Center, Source Imagery Dates: 1988-1990
 - Rochester - Olmsted Planning Department, Source Imagery Dates: 1992, 1993 and 1995
 - Metropolitan Council, Source Imagery Date: 1990
 - Department of Natural Resources, Division of Forestry - Resource Assessment, Source Imagery Dates: 1992, 1993 and 1995



Credits and Acknowledgements
Data collection and interpretation supported by the Minnesota Future Resources Fund as recommended by the Legislative Commission on Minnesota Resources (LCMR).

The following groups also participated over an extended period:
Linnet Geosystems, Winthrop
The Manitoba Remote Sensing Centre, Winnipeg
Minnesota Department of Natural Resources
University of Minnesota - Department of Forest Resources
Wildlife, Smith and Notling

Map Projection: UTM, Extended Zone 15
Datum: NAD83

Liability statement
The Land Management Information Center (LMIC) does not warrant the results you may obtain by using this map. This map is provided as is without warranty or implied warranties, including warranties of merchantability and fitness. In no event will LMIC be liable for any consequential, incidental or special damages, including any lost profits or lost savings, even if a LMIC representative has been advised of the possibility of such damages or any other claim by any third party.

Distribution information
This map was prepared in April, 1996. Both the map and the data used to create it are available from the Land Management Information Center at Minnesota Planning.
You may also view a generalized, interactive land use map of Minnesota, along with detailed information about land use data at:
<http://mapserver.lmic.state.mn.us/landuse>

For further assistance, or to order copies of this map, contact:
Land Management Information Center
658 Cedar Street
Central Building, Room 330
St. Paul, MN 55155
Phone: (651) 296-1211
FAX: (651) 296-1212
E-Mail: clearinghouse@mnplanning.state.mn.us

1. Minnesota Remote Sensing Center, Source Imagery Dates: 1987-1988
2. Minnesota Remote Sensing Center, Source Imagery Dates: 1991-1995
3. Minnesota Department of Transportation, 1997-98

